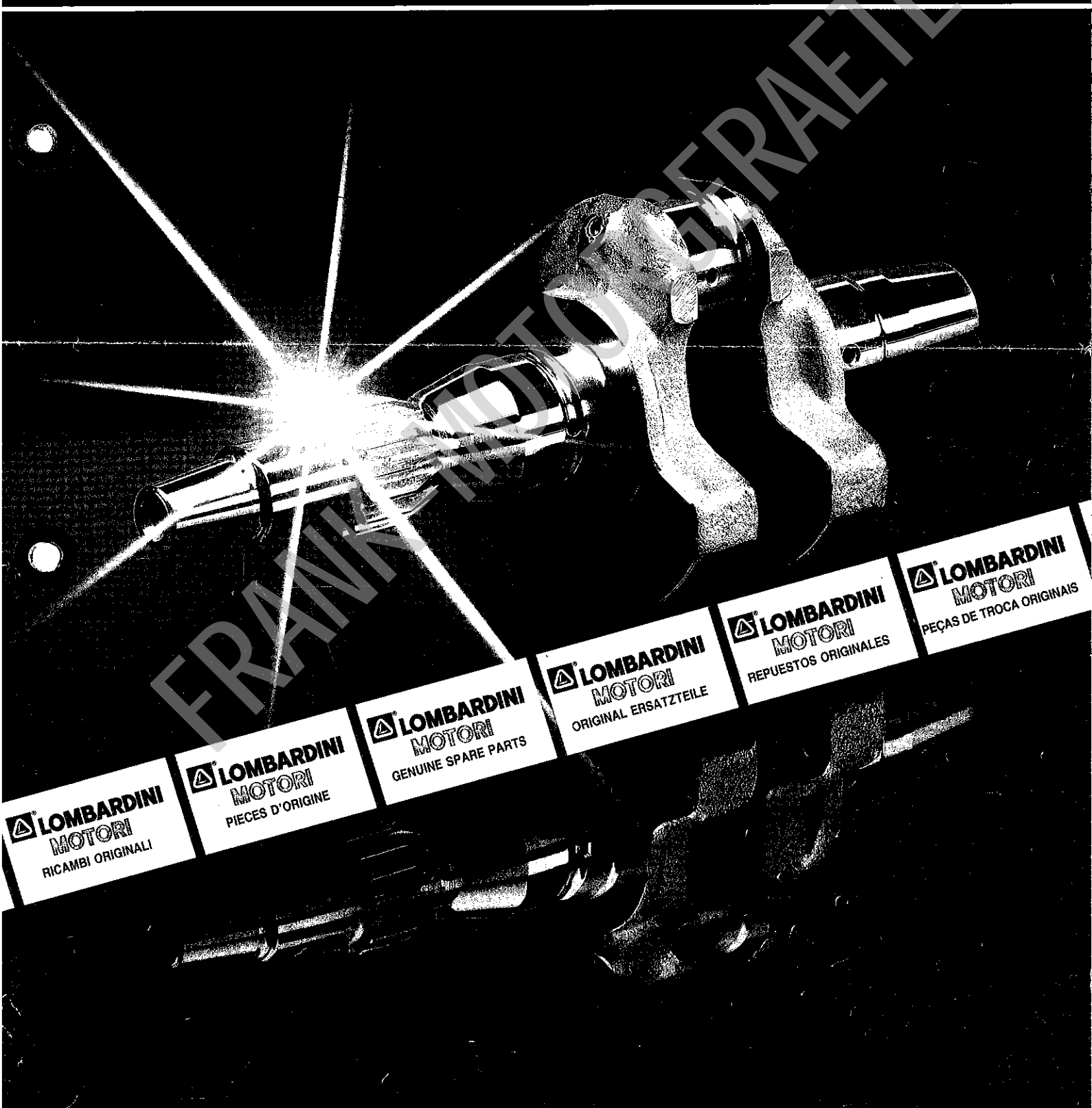


**TAVOLA RICAMBI
TABLEAU PIECES DETACHEES
SPARE PARTS TABLE
ERSATZTEILTAFEL
TABLA DE REPUESTOS
TÁBUA PEÇAS DE TROCA**

**15LD315
15LD350**



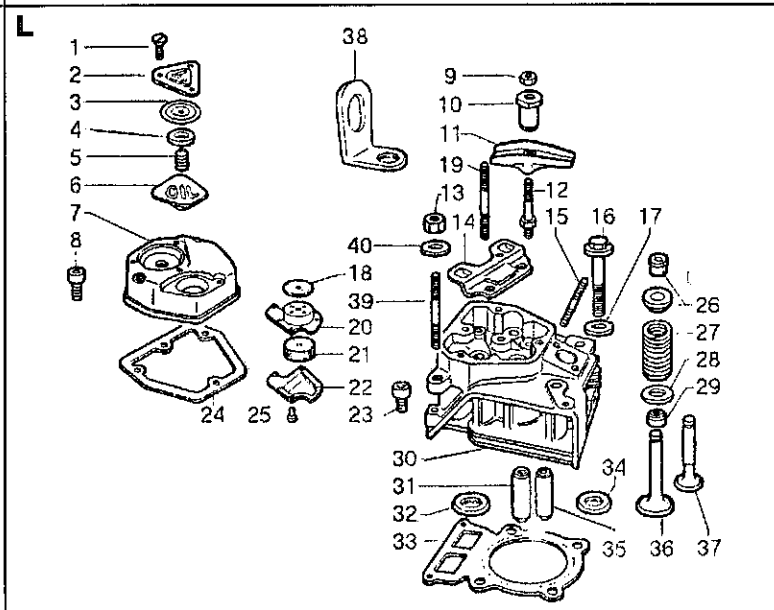
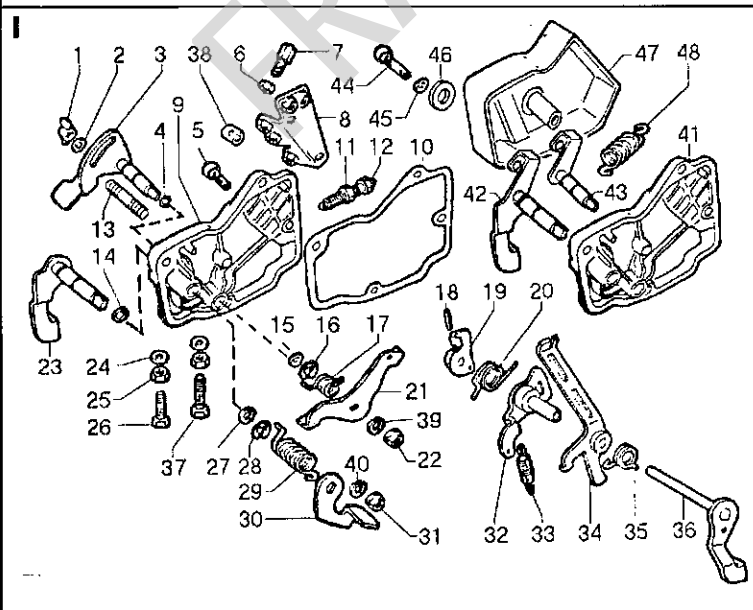
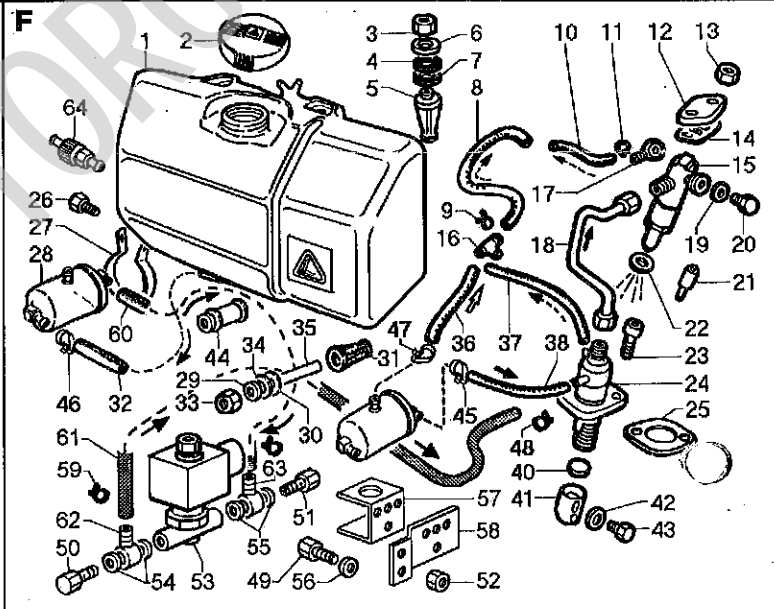
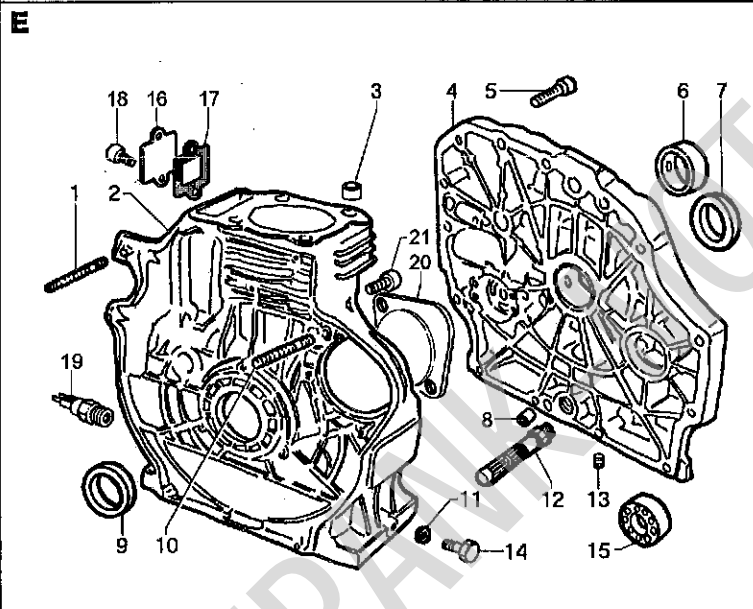
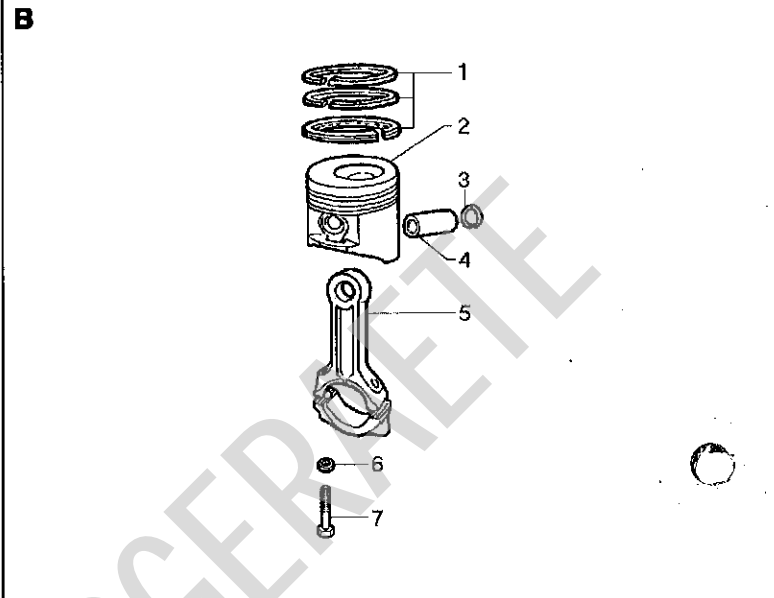
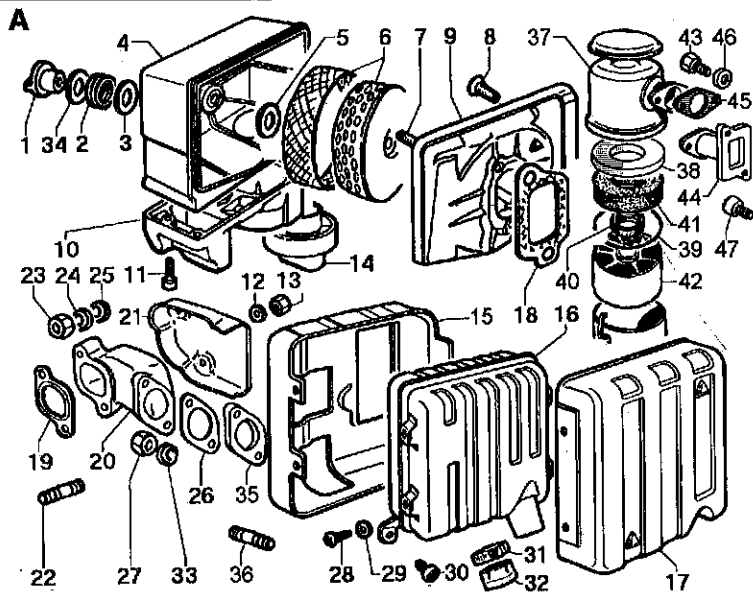
RICAMBI
PIECES
SPARE PARTS
ERSATZTEILE
REPUESTOS
RECÁMBIOS

RICAMBI PER MOTORE STANDARD.
PER APPLICAZIONI SPECIALI
CONSULTARE IL CATALOGO PRESSO I
CENTRI ASSISTENZA E RICAMBI.

15 LD 315

PIECES POUR DES MOTEURS
STANDARD.
POUR LES ADAPTATIONS CONSULTER
LE CATALOGUE AUPRES DES AGENTS
SERVICE.

SPARE PARTS FOR STANDARD
ENGINE.
FOR SPECIAL APPLICATIONS SEE
MASTER CATALOG AT SERVICE
CENTERS.



ERSATZTEILE FÜR STANDARD-
MOTOREN.
FÜR SONDERANFERTIGUNGEN SIEHE
ERSATZTEILKATALOG BEI SERVICE
WERKSTÄTTEN.

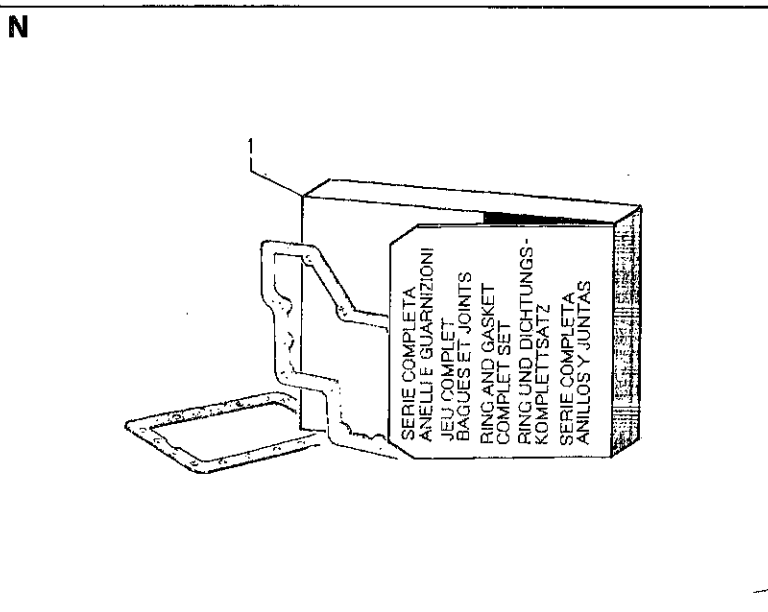
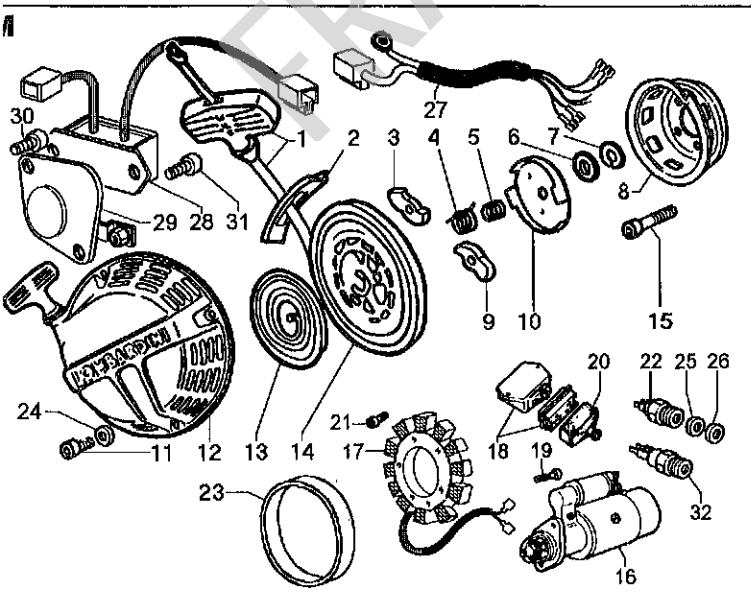
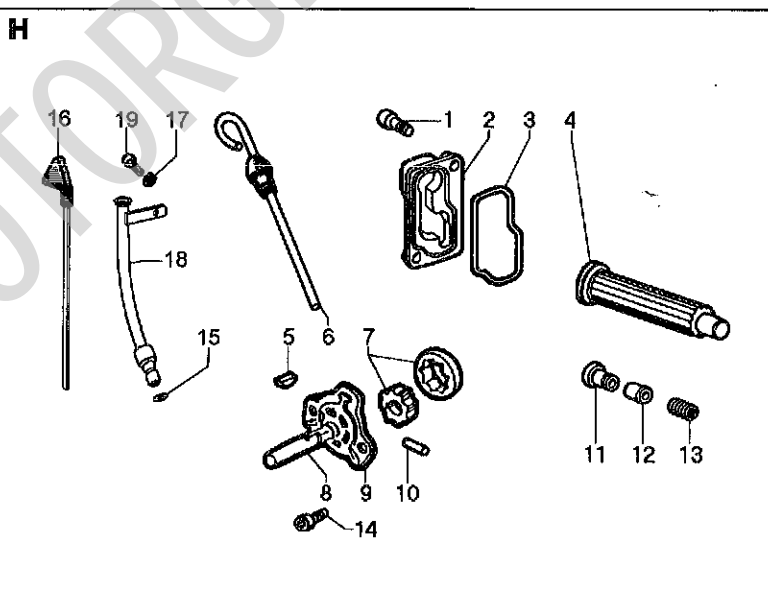
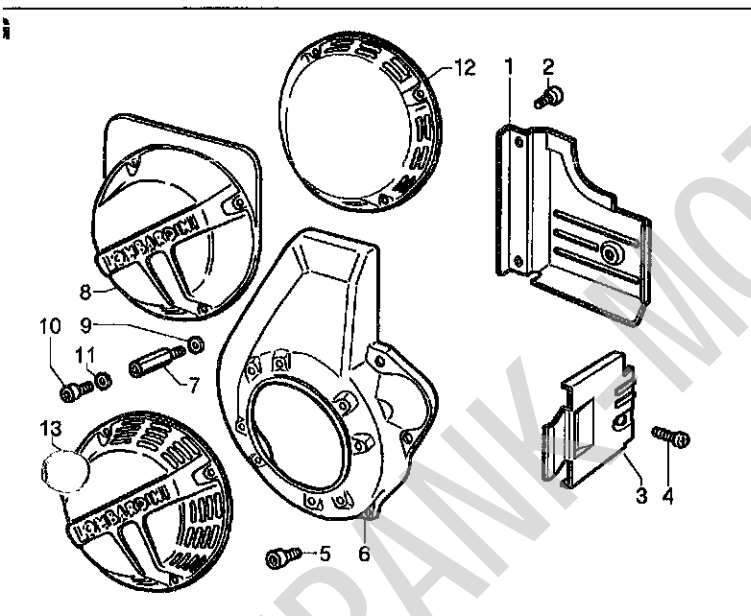
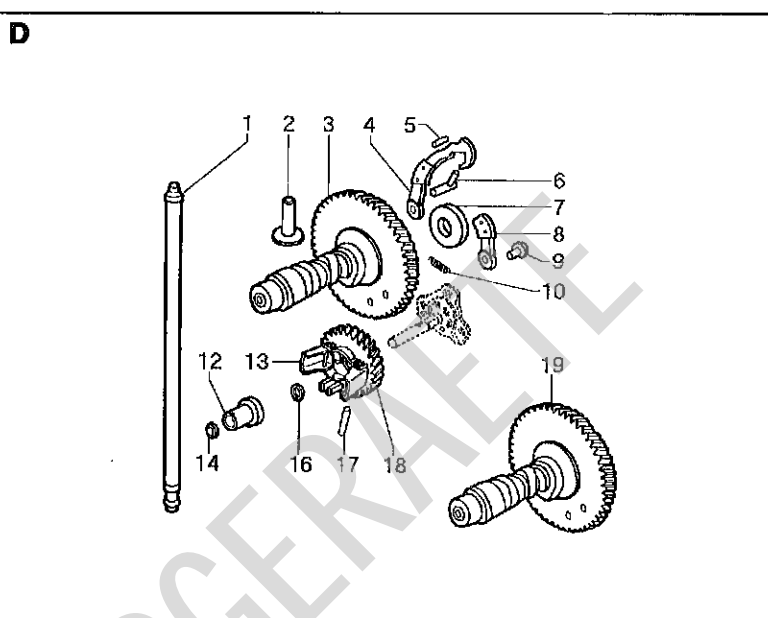
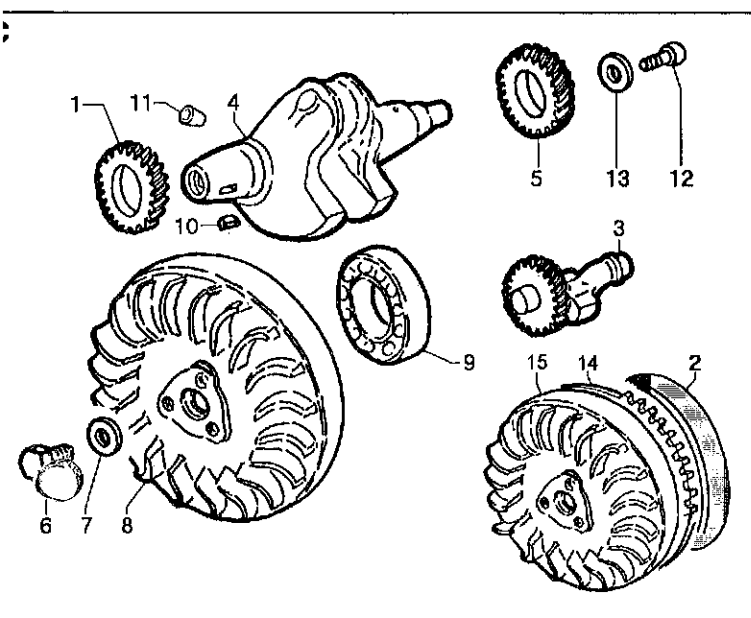
REPUESTOS PARA MOTORES
STANDARD.
PARA APLICACIONES VEASE
CATALOGO EN LAS ESTACIONES
SERVICE.

PEÇAS DE TROCA PARA MOTOR
STANDARD.
PARA APLICAÇÕES ESPECIAIS
CONSULTAR O CATÁLOGO NOS
CENTROS DE ASSISTÊNCIA E PEÇAS
DE TROCA.

GRUPPO

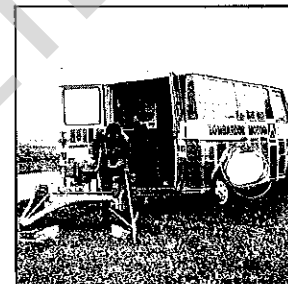
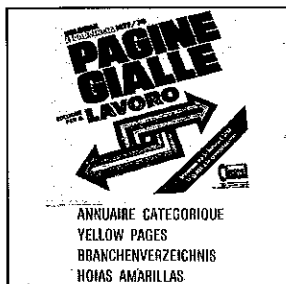
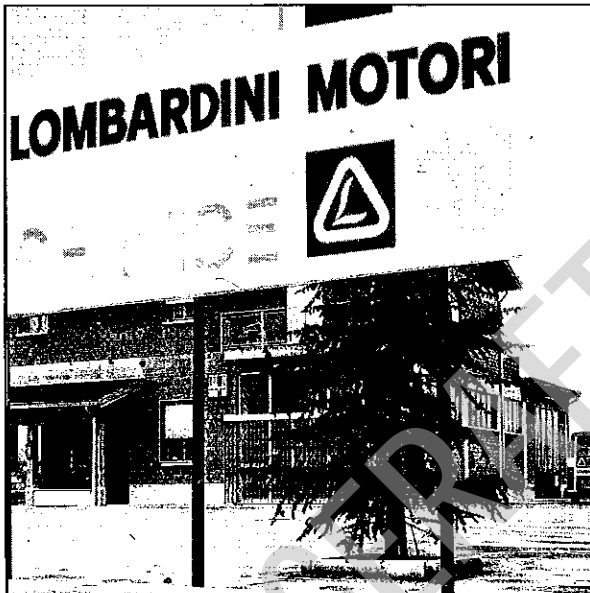
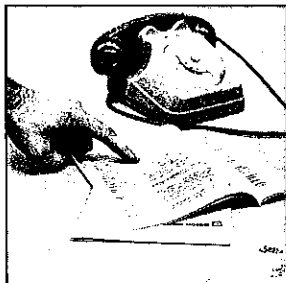
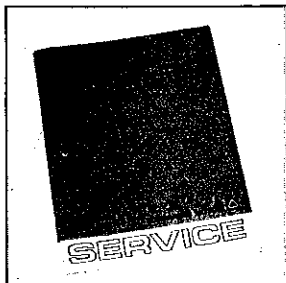
15

Matricola 1.5302.453



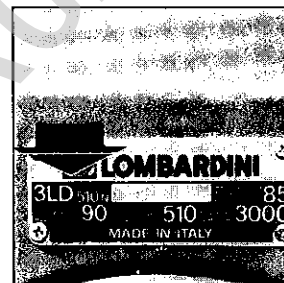
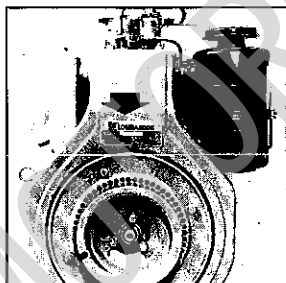
SERVICE

Per assistenza e ricambi rivolgersi a stazioni di servizio autorizzate Lombardini. N. tel. su libretto service e su pagine gialle.
 Pour toute exigence de service après-vente et pièces détachées, s'adresser aux Stations de service du réseau Lombardini. N. de téléphone indiqué sur brochure relative au service après-vente et annuaire catégorique.
 For spare parts and after-sale assistance contact authorized Lombardini service centers. Tel. No. appears on service booklet and telephone directory.
 Für Service und Ersatzteile bitten wir, sich an autorisierte Werkstätte zu wenden. Telefon-Nummer laut unserem Service-Buchlein und Fernsprachbuch.
 Para asistencia y repuestos, dirigirse a las estaciones de servicio autorizadas Lombardini. N. Tel. su libretto service y su hojas amarillas.
 Para asistencia e recambios dirigi-se as estações de serviço autorizadas Lombardini. Número telefone é sobre a caderneta de serviço e sobre as páginas amarelas.

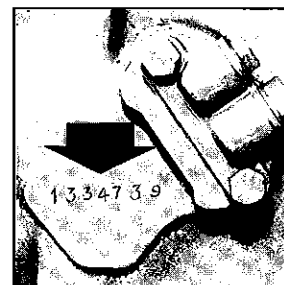
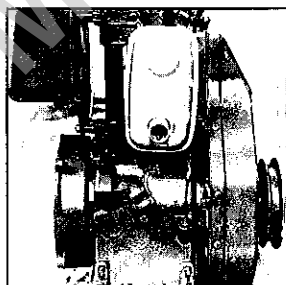
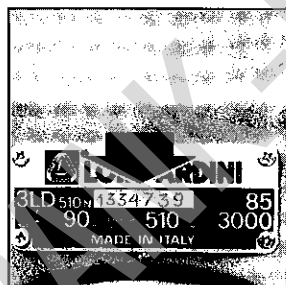
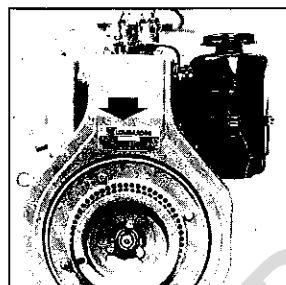


ORDINI RICAMBI
COMMANDES PIÈCES
PART ORDERS
E-TEIL BESTELLUNGEN
PEDIDOS DE REPUESTOS
PEDIDOS RECÁMBIOS

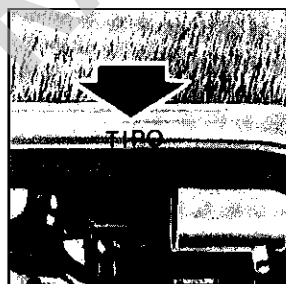
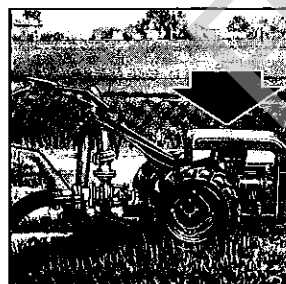
TIPO MOTORE
TYPE DE MOTEUR
ENGINE TYPE
MOTORTYP
TIPO DEL MOTOR
TIPO DE MOTOR



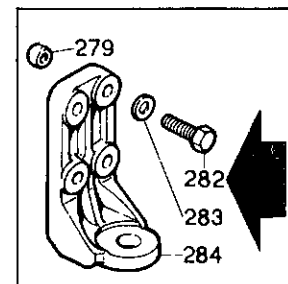
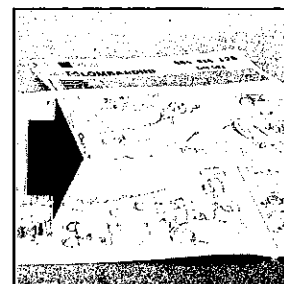
MATRICOLA
MATRICULE
SERIAL NUMBER
MOTORENNUMMER
NUMERO DEL MOTOR
NUMERO DO MOTOR



TIPO DELLA MACCHINA
TYPE OF MACHINE
EQUIPMENT TYPE
MASCHINTYP
MODELO DE LA MÁQUINA
TIPO DA MÁQUINA



MATRICOLA del ricambio
REFERENCE de la pièce
SPARE PART number
BESTELNUMMER des Teiles
REFERENCIA del repuesto
REFERÈNCIA do recâmbio



FABBRICA ITALIANA MOTORI S.p.A.
 42100 REGGIO EMILIA ITALIA CAS. POST. 1074
 Tel. (0522) 3891 - Teleg. LOMBARMOTOR - Telex: 530003 MOTLOMI

LOMBARDINI USA INC.
 LOMBARDINI FRANCE S.A.
 LOMBARDINI MOTOREN G.M.B.H.
 LOMBARDINI (U.K.) LTD.
 HISPANOMOTOR S.A.

2150 Boggs Road, Bldg. 300, Suite 300, Duluth, GA 30136, USA
 Zone Ind. Nord, Rue du Nizerand, Amas 69400 Villefranche S/Saône, France
 Bernstr. 54 - 60487 Frankfurt/Main, Deutschland
 Unit 5, Ferry Mills, Osney Mead, Oxford OX2 0ES, U.K.
 Zona Industrial Cova Solera, s/nº, 08191 RUBÍ-BARCELONA, España

ENTE COMPILATORE TEGOATI <i>tegoati</i>	COD. LIBRO 1.5302.453	MODELLO N° 50703	DATA EMISSIONE 30/03/95	DATA REVISIONE 02	DATA 15/02/97	VISTO <i>[Signature]</i>
--	--------------------------	---------------------	----------------------------	----------------------	------------------	-----------------------------

vedi TAVOLA RIC./see SPARE P.TABLE/voir TABLEAU P.DETACH. 1.5302.453

Luglio/July/Juillet 1997

MOTORI/ENGINES/MOTEURS Gr.15

 Colonna/Column/Colonne 1 = 15LD 315
 " " " 2 = 15LD 350

 Versione/Standard version
 " " "

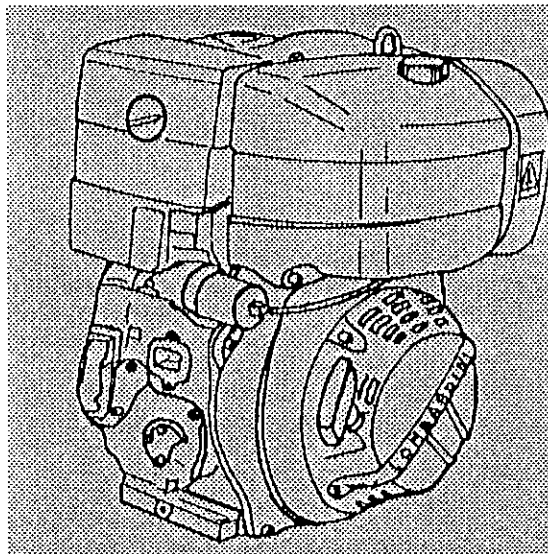
Vedi/See/Voir

 Libretto Uso e Man./Use-Maint.booklet/Livret Emploi-Entret. 1.5302.443
 Libretto Service/Service directory/Reseau S.A.V. 1.7968.002

A - valido dal motore vedi Circolare Tecnica
 from engine S.No see Service Letter
 à partir du moteur voir Circulaire Technique
 B - valido fino al motore vedi Circolare Tecnica
 up to engine s.No. see Service Letter
 jusqu'au moteur voir Circulaire Technique
 I - intercambiabile vedi Circolare Tecnica
 interchangeable see Service Letter
 interchangeable voir Circulaire Technique
 E - ad esaurimento/exhausting part/piece en epuisement.
 npd non più disponibile/no longer available/non plus disnible
 CT vedi circolare tecnica/see service letter/voir circulaire technique

 Descrizioni non impegnative/Subject to modifications/Modifications rùservées
 TECO/ATL/Assistenza Tecnica Lombardini/Luglio 1997

Riquadro Drawing Dessin	A	ASPIRAZIONE/SCARICO INTAKE/EXHAUST ADMISSION/ECHAPPEMENT	Riquadro Drawing Dessin	G	RAFFREDDAMENTO COOLING SYSTEM CIRCUIT DE REFROIDISSEMENT
Riquadro Drawing Dessin	B	BIELLA/PISTONE CONNECTING ROD/PISTON BIELLE/PISTON	Riquadro Drawing Dessin	H	CIRCUITO DI LUBRIFICAZIONE LUBRICATING SYSTEM CIRCUIT DE LUBIFICATION
Riquadro Drawing Dessin	C	ALBERO A GOMITO/VOLANO CRANKSHAFT/FLYWHEEL VILEBREQUIN/VOLANT	Riquadro Drawing Dessin	I	COMANDI CONTROLS COMMANDES
Riquadro Drawing Dessin	D	DISTRIBUZIONE/REG.GIRI TIMING/SPEED GOVERNOR DISTRIBUTION/REG.VITESSE	Riquadro Drawing Dessin	L	TESTA/CAPPELLO BIL./VALVOLE CYL.HEAD/ROCKER BOX/VALVES CULASSE/COUV.CULB./SOUPAPES
Riquadro Drawing Dessin	E	BASAMENTO/PORTINA/PIEDI CRANKCASE/COVER/MOUNTS CARTER/COTE DIST./PIEDS	Riquadro Drawing Dessin	M	AVVIAMENTO STARTING DEMARREUR
Riquadro Drawing Dessin	F	CIRCUITO COMBUSTIBILE FUEL SYSTEM CIRCUIT CARBURANT	Riquadro Drawing Dessin	N	SERIE GUARNIZIONI/ANELLI GASKET/O RING SET JEU DE JOINTS/HAGUES





15LD 315 - 15LD 350

vedi Tavola Ric./see Parts Table 1.5302.453

Pos.	Matricola/Part No.	Note/Remarks	15LD 315	15LD 350
A 1+	6560.036 196	pomello chiusura filtro/knob	1	1
A 2+	5660.067 196	molla richiamo filtro/spring	1	1
A 3+	7625.271 196	rondella per molla/washer	2	2
A 4	ex 2750.310 - - - - -	sostituito da/superseded by - - - - - >		
	->=2750.326 196 I	COPERCHIO FILT.ARIA/AIR CLEAN.COVER (Pos. 1-2-3-4-10-11-14-34)	1	1
	->=2750.354 197	SPECIALE (senza prefiltro e deflett.) SPECIAL (without prefilter/deflector) (Pos. 1-2-3-4-14)		1
A 5	7626.047 9	rondella/washer d.6,2	1	1
A 6	ex 2175.128 - - - - -	sostituito da/superseded by - - - - - >		
	-> 2175.154 196 I	cartuccia aria/air cleaner element	1	1
A 7	6760.085 9	prigioniero/stud M 6 X 20	1	1
A 8	9800.112 986	vite/screw M 8 X 16	2	2
A 9	8836.228 196	supporto filtro aria/support	1	1
A 10+	ex 6727.041 - - - - -	non disp./not avail. vedi/see Pos. 4		
A 11+	9730.004 9 or	vite/screw M 5 X 16	5	5
	9820.172 9	vite autofil./screw 4 X 20	5	5
A 12	4480.003 9	guarnizione in fibra/fibre gasket	2	2
A 13	ex 3203.047 - - - - -	sostituito da/superseded by - - - - - >		
	-> 3240.164 9 I	dado/nut M 8	2	2
A 14+	3350.127 196	deflettore/prefilter deflector	1	1
A 15	6927.318 196	protez.l.entrata gas/muffler guard	1	1
A 16	ex 5460.448 - - - - -	sostituito da/superseded by - - - - - >		
	-> 5460.496 196 I	marmitta/muffler	1	1
	5460.477 196	marmitta scarico in alto/upward muff	1	1
A 17	6927.319 196	protez.l.uscita gas/muffler guard	1	1
A 18	4490.084 196	guarn.filt.aria/air cleaner gasket	1	1
A 19	4501.101 196	guarnizione/gasket	2	2
A 20	2486.315 196	collettore scarico/exhaust manifold	1	1
A 21	6927.345 196	protez.collett.scar./exh.manif.guard	1	1
A 22	6780.084 9	prigioniero/stud M 8 X 40	2	2
A 23	3203.095 9	dado/nut M 8	2	2
A 24	7625.010 9	rondella/washer d.8	2	2
A 25	4480.003 9	guarnizione in fibra/fibre gasket	2	2
A 26	4501.113 196	guarnizione/gasket	1	1
A 27	3203.095 9	dado/nut M 8	2	2
A 28+	9790.037 9	vite/screw M 6 x 8	4	4
A 29+	7555.027 9	rondella/washer d.6,4	4	4
A 30	9732.074 9	vite/screw M 8 X 20	1	1
A 31	3630.156 9	fascetta/clamp 20-32	1	1
A 32	9602.151 196	tubo parafiamma/spark arrestor guard	1	1
A 33	ex 7555.007 - - - - -	sostituito da/superseded by - - - - - >		
	-> 7555.029 9	rondella/washer d.8	2	2
A 34+	7625.277 196	rondella per pomello/washer	1	1
A 35	3815.079 196	flangia/exhaust flange	1	1
A 36	6780.012 9	prigioniero/stud M 8 X 25	2	2
A 37	ex=3700.360 283 E	-> da/from s.No. -> CT 150005 ->		
	->=3700.373 292 I	FILTRO ARIA/AIR CLEANER (diam.122) (Pos. 37-38-39-40-41-42)	1	1
A 38+	ex 5496.220 283 B	-> da/from s.No. -> CT 150005 ->		
	-> 5496.333 292 A	massa filtr.sup.spugna/filt.element	1	1
A 39+	ex 1261.097 283 B	-> da/from s.No. -> CT 150005 ->		
	-> 1261.072 500 A	distanziale/spacer	1	1
A 40+	ex 4775.522 283 B	-> da/from s.No. -> CT 150005 ->		
	-> 4775.120 500 A	anello tenuta/seal ring	1	1
A 41+	ex 5496.221 283 B	-> da/from s.No. -> CT 150005 ->		
	-> 5496.071 500 A	massa filt.inferiore/filt.element	1	1

Motore/Engine 15LD 315

15LD 350



15LD 315 - 15LD 350
vedi Tavola Ric./see Parts Table 1.5302.453

Pos.	Matricola/Part No.	Note/Remarks	15LD 315	15LD 350
A 42+	ex 5496.225 283	B -> da/from s.No. -> CT 150005 ->	1	1
	-> 5496.334 292	A massa filtr.sup.feltro/filt.element	2	2
A 43	1770.005 9	bullone/bolt M 8 X 22		
A 44	ex 3902.318 - - - - -	sostituito da/superseded by - - - - ->		
	-> 3902.326 196	I flangia/flange	1	1
A 45	4500.067 271	guarnizione/gasket	1	1
A 46	7565.007 9	rondella/washer diam.8	2	2
A 47	9732.074 9	vite/screw M 8 X 20	2	2
A 48	=3700.374 292	FILTRO ARIA/AIR CLEANER (diam.122) (Pos. 38-39-40-41-42-48-49-50-51-52-53)	1	1
A 49	2125.055 500	cappellotto/cap	1	1
A 50	1301.053 500	prefiltro/cyclonic prefilter	1	1
A 51+	3200.002 9	dado ad alette/nut	1	1
A 52+	7625.092 9	rondella/washer	1	1
A 53+	4775.137 914	guarnizione/joint	1	1
B 1+	8211.227 196	serie segmenti/ring set std.	1	-
"	8211.228 196	serie segmenti/ring set +0,50	1	-
"	8211.229 196	serie segmenti/ring set +1,00	1	-
"	8211.239 197	serie segmenti/ring set std.	-	1
"	8211.240 197	serie segmenti/ring set +0,50	-	1
"	8211.241 197	serie segmenti/ring set +1,00	-	1
B 2	=6501.250 196	PISTONE COMPLETO/PISTON SET std.	1	-
"	=6501.251 196	PISTONE COMPLETO/PISTON SET +0,50	1	-
"	=6501.252 196	PISTONE COMPLETO/PISTON SET +1,00	1	-
"	=6501.337 196	std per vettura/for minicar	1	-
"	=6501.338 196	+0,50 per vettura/for minicar	1	-
"	=6501.339 196	+1,00 per vettura/for minicar	1	-
"	=6501.487 197	PISTONE COMPLETO/PISTON SET std.	-	1
"	=6501.488 197	PISTONE COMPLETO/PISTON SET +0,50	-	1
"	=6501.489 197	PISTONE COMPLETO/PISTON SET +1,00 (Pos. 1-2-3-4)	-	1
B 3+	1160.057 196	anello/circlip	2	-
"	1160.061 197	anello/circlip	-	2
B 4+	8480.089 196	spinotto/piston pin	1	-
"	8480.098 197	spinotto/piston pin	-	1
B 5	=1526.155 196	BIELLA COMPLETA/CONNECT.ROD std.	1	-
"	=1526.163 196	BIELLA COMPLETA/CONNECT.ROD -0,25	1	-
"	=1526.164 196	BIELLA COMPLETA/CONNECT.ROD -0,50	1	-
"	=1526.204 196	BIELLA COMPLETA/CONNECT.ROD std.	-	1
"	=1526.205 196	BIELLA COMPLETA/CONNECT.ROD -0,25	-	1
"	=1526.206 196	BIELLA COMPLETA/CONNECT.ROD -0,50 (Pos. 5-6-7)	-	1
B 6+	7626.048 9	rondella/connect.rod washer	2	2
B 7+	ex 1770.148 - - - - -	non disp./not avail. vedi/see Pos. 5		

Motore/Engine 15LD 315
 " " " " 15LD 350


15LD 315 - 15LD 350
vedi Tavola Ric./see Parts Table 1.5302.453

Pos.	Matricola/Part No.	Note/Remarks	15LD 315	15LD 350
C 1+	ex 4926.222	- - - - - non disp./not avail. vedi/see Pos. 4		
C 2	vedi/see Pos. M 23		
C 3	1111.177 196	albero equil.compl./equalizer shaft	1	1
C 4	=1050.855 196	ALBERO GOMITO/CRANKSHAFT std. (Pos. 4-5-10-11)	1	1
"	=1050.856 196	ALBERO GOMITO COMPLETO per motore con equilibratore (Pos. 1-4-5-10-11) CRANKSHAFT ASS.Y for engine with equalizer device (Pos. 1-4-5-10-11)	1	1
C 5+	ex 4926.219	- - - - - non disp./not avail. vedi/see Pos. 4		
C 6	1800.030 9	bullone/bolt M 14 X 35 sin.	1	1
C 7	7626.043 9	rondella/waher d.14,5	1	1
C 8	9880.863 196	volano/flywheel (standard)	1	1
"	9880.988 196	volano predispos.per rotore alternat. flywheel suitable for altern.rotor	1	1
"	ex	-> da/from s.No. 3582963 -> CT 150001 ->		
"	-> 9881.134 196 A	volano alleggerito pred. per rotore lit flywheel suitable for alt.rotor	1	1
C 9	3002.058 9	cuscinetto/ball bearing 6307-C3	1	1
C 10+	2280.067 9	chiavetta/key 5 X 7,5 X 19	1	1
C 11+	9080.132 9	tappo/plug d.6	1	1
C 12	1770.039 9	bullone/bolt M 8 X 28	1	1
C 13	7625.060 9	rondella/washer	1	1
C 14+	ex 2816.172	B -> da/from s.No. 3582963 -> CT 150001 ->		
"	-> 2816.102 196 A	corona avviamento/crown gear	1	1
C 15	ex 9880.886	B -> da/from s.No. 3582963 -> CT 150001 ->		
"	->=9881.118 196 A	VOLANO CON CORONA-predispos.per rotore FLYWHEEL WITH CROWN-suitable for alternator rotor	1	1
"	ex 9880.995	B -> da/from s.No. 3582963 -> CT 150001 ->		
"	->=9881.120 196 A	VOLANO CON CORONA-per minivetture predisposto per rotore FLYWHEEL WITH CROWN-for minicars/ suitable for alternator rotor (Pos. 8-14)	1	1
D 1	1410.124 196	asta punteria/tie rod	2	2
D 2	7215.098 120	punteria/push rod	2	2
D 3	=1011.360 196	ALBERO A CAMME COMPL. DI DECOMPRESS. CAMSHAFT WIHT COMPRESSION RELEASE (Pos. 3-4-5-6-7-8-9-10)	1	1
D 4+	vedi/see pos. 3		
D 5+	vedi/see pos. 3		
D 6+	vedi/see pos. 3		
D 7+	1301.245 147	anello rasam/thrust-washer d.14	1	1
D 8+	vedi/see pos. 3		
D 9+	vedi/see pos. 3		
D 10+	vedi/see pos. 3		
D 12	=7200.156 196	PUNPALINO CPMPLETO/DRIVE ROD ASS.Y (Pos. 12-14)	1	1
D 13	ex 5496.212	- - - - - non disp./not avail. vedi/see Pos. 18		
D 14+	vedi/see Pos. 12		
Motore/Engine 15LD 315				
" " 15LD 350				



15LD 315 - 15LD 350
vedi Tavola Ric./see Parts Table 1.5302.453

Pos.	Matricola/Part No.	Note/Remarks	15LD 315	15LD 350
D 16	1240.002 9	anello seeger/snap ring d.8	1	1
D 17	7770.171 196	rullino/roller 3 X 27,8	2	2
D 18	ex 4936.220 - - - - - ->=4896.328 196 I	sostituito da/superseded by - - - - - > GRUPPO REGOLATORE/GOVERNOR ASS.Y (Pos. 13-17-18)	1	1
D 19	1011.359 196	albero camme (senza decompressione) camshaft (without compress. release)	1	1
E 1	6760.099 196	prigioniero/stud M 6 X 48	1	1
"	6780.169 196	prigioniero/stud M 8 X 52	1	1
E 2	1510.704 196	basamento/crankcase	1	-
"	1510.784 197	basamento/crankcase	-	1
E 3	1970.140 107	bussola centraggio/sleeve	2	2
E 4	=6645.472 196	PORTINA/CRANKCASE COVER (Pos. 4-6 std.)	1	1
E 5	9730.031 9	vite/screw M 8 X 40	14	14
E 6	ex 1611.175 - - - - - -> 1611.185 196 I	sostituito da/superseded by - - - - - > bronzina/bearing std.	1	1
"	1611.180 196	bronzina/bearing -0,25	1	1
"	1611.181 196	bronzina/bearing -0,50	1	1
"	1611.186 196	bronzina/bearing -1,00	1	1
E 7	1213.345 196	anello paraol./seal ring 28x40x7	1	1
E 8	1970.338 196	boccola/bushing	2	2
E 9	ex 1213.344 - - - - - -> 1213.361 196 I	sostituito da/superseded by - - - - - > anello paraol./seal ring 35x52x7	1	1
E 10	6760.099 196	prigioniero/stud M 6 X 48	1	1
"	6780.170 196	prigioniero/stud M 8 X 52	1	1
E 11	4350.007 9	guarnizione/gasket	2	2
E 12	3740.109 196	filtro aspiraz. olio/oil filter	1	1
E 13	9765.108 9	vite/screw M 10 X 1,5	1	1
E 14	9040.012 183	tappo/plug M 14	2	2
E 15	3002.077 9	cusc.alb.controrot./equal.shaft bear.	2	2
E 16	3800.037 196	flangia/flange	1	1
E 17	4400.059 196	guarnizione/gasket	1	1
E 18	9730.024 9	vite/screw M 8 X 16	2	2
E 19	vedi/see Pos. M 32		
E 20	3800.036 196	flangia chusura foro/flange	1	1
E 21	9732.041 9	vite/screw M 10 X 18	2	2
<i>1968103269 Tank E300 Diesel</i>				
F 1	8103.269 196	serbatoio/fuel tank	1	1
F 2	9043.079 183 <i>E300</i>	tappo serb./fuel tank cap std.	1	1
"	9043.089 196 <i>E400 102</i>	tappo serb./fuel tank cap spec.Weber	1	1
F 3	ex 3203.047 - - - - - -> 3240.164 9 I	sostituito da/superseded by - - - - - > dado/nut M 8	2	2
F 4	7701.154 9	rondella gomma/rubber washer	2	2
F 5	3527.384 196	distanziale/spacer	2	2
F 6	7625.272 196	rondella/washer d.8,2	2	2
F 7	7701.154 9	rondella gomma/rubber washer	2	2
F 8	9375.846 196	tubo/fuel pipe 5x10 mm.165	1	1
F 9	3630.113 9	fascetta/clamp	2	2

Motore/Engine 15LD 315
 " " 15LD 350



15LD 315 - 15LD 350

vedi Tavola Ric./see Parts Table 1.5302.453

Pos.	Matricola/Part No.	Note/Remarks	15LD 315	15LD 350
F 10	9375.847 196	tubo/fuel pipe 5x10 mm. 75	1	1
F 11	3630.050 9	fascetta/clamp	1	1
F 12	3902.310 196	flangia/injector flange	1	1
F 13	3203.050 9	dado/nut M 6	2	2
F 14	6370.512 196	piastra/injector plate	1	1
F 15	5010.040 196	iniettore/injector 15LD 315	1	1
"	5010.043 197	iniettore/injector 15LD 350	-	-
F 16	2527.082 196	connettore/pipe fitting	1	1
F 17	7270.108 9	raccordo/banjo union d.6	1	1
F 18	9375.807 196	tubo/delivery pipe	1	1
F 19	4670.001 9	guarniz.rame/copper gasket d.6	2	2
F 20	1901.146 9	bullone raccordo/union bolt M 6	1	1
F 21	6531.435 196	polverizzatore/nozzle 15LD 315	1	-
"	6531.447 197	polverizzatore/nozzle 15LD 350	-	1
F 22	4670.099 550	guarnizione iniettore/gasket	1	1
F 23	9730.010 9	vite/screw M 6 X 16	2	2
F 24	6590.259 196	pompa iniez./injection pump std.	1	1
"	6590.281 196	per minivetture/special for minicar	1	1
F 25	4580.160 196	guarn.pomp.iniez./gasket 0,05	1	1
"	4580.161 196	guarn.pomp.iniez./gasket 0,10	1	1
"	4580.162 196	guarn.pomp.iniez./gasket 0,30	1	1
"	4580.163 196	guarn.pomp.iniez./gasket 0,50	1	1
F 26	9730.319 9	vite/screw M 6 X 12	1	1
F 27	3617.197 196	fascetta/fuel filter clamp	1	1
F 28	ex 3730.088 - - - - -	sostituito da/superseded by - - - - - >	1	1
->	3730.096 196 I	filtro comb./fuel filter	1	1
F 29	7626.047 9	rondella/washer d.6,2	2	2
"	7625.272 196	rondella/washer d.8,2	2	2
F 30	7701.154 9	rondella gomma/rubber washer	2	2
F 31	3527.384 196	distanziale/spacer	1	1
F 32	9375.842 196	tubo/fuel pipe 5x10 mm. 95	1	1
F 33	3203.050 9	dado/nut M 6	2	2
"	3240.164 9	dado/nut M 8	2	2
F 34	7701.154 9	rondella gomma/rubber washer	2	2
F 35	9602.132 196	tubetto distanziale/spacer	1	1
F 36	9375.844 196	tubo comb./fuel pipe 5x10 mm. 85	1	1
F 37	ex 9375.883 - - - - -	sostituito da/superseded by - - - - - >	1	1
->	9375.845 196 I	tubo comb./fuel pipe 8x6 mm 155	1	1
F 38	9375.891 196	tubo comb./fuel pipe 9,5x4,5 mm.80	1	1
F 40	ex 6000.050 - - - - -	sostituito da/superseded by - - - - - >	V	V
->	6000.072 104 I	pastiglia/sleeve	1	1
F 41	7215.097 196	punteria/push rod	1	1
F 42	7625.092 9	rondella/washer d.6,5	1	1
F 43	9865.221 196	vite/screw M 6 X 1	1	1
F 44	ex 3527.403 - - - - -	sostituito da/superseded by - - - - - >	1	1
->	3527.419 196 I	distanziale/spacer	1	1
F 45	3630.160 9	fascetta/clamp d.10,5	1	1
F 46	3630.159 9	fascetta/clamp d.10-12,5	1	1
F 47	3630.159 9	fascetta/clamp d.10-12,5	1	1
F 48	3630.113 9	fascetta/clamp	1	1
F 49	1760.001 9	bullone/bolt M 6 X 10	2	2
F 50	1901.037 9	bullone racc./union bolt	1	1
F 51	1901.037 9	bullone racc./union bolt	1	1
F 52	3240.008 9	dado/nut M 6	2	2
F 53	3587.144 196	elettrovalvola/electro-valve	1	1
F 54	4670.057 9	guarniz.rame/copper gasket	2	2
F 55	4670.057 9	guarniz.rame/copper gasket	2	2
F 56	7555.004 9	rondella/washer diam.6	2	2
F 57	8510.145 196	squadretta/bracket	1	1
F 58	8836.258 196	supporto/support	1	1
F 59	3630.113 9	fascetta/clamp	4	4
F 60	9375.919 196	tubo comb./fuel hose mm 225	1	1

Motore/Engine 15LD 315

15LD 350


15LD 315 - 15LD 350
vedi Tavola Ric./see Parts Table 1.5302.453

Pos.	Matricola/Part No.	Note/Remarks	15LD 315	15LD 350
F 61	9375.920 196	tubo comb./fuel hose mm 210	1	1
F 62	7270.100 9	raccordo/banjo union	1	1
F 63	7270.100 9	raccordo/banjo union	1	1
F 64	7755.106 196	rubinetto/shut off valve	1	1
F 65	1901.030* 9	bullone raccordo/union bolt M 10	1	1
F 66	1570.045* 107	bocchettone/filler cap M 14	1	1
F 67	3587.119* 107	elettrovalvola/electrovalve	1	1
F 68	=3730.073* 107	FILTRO COMBUSTIBILE/FUEL FILTER (Pos. 68-71)	1	1
F 69	4670.059* 9	guarnizione rame/copper gasket	2	2
F 70	4670.061* 9	guarnizione rame/copper gasket	2	2
F 71+	2175.045*2830	cartuccia comb./fuel filter elem.	1	1
F 72	4670.061* 9	guarnizione rame/copper gasket	2	2
F 73	1901.032* 9	bullone raccordo/union bolt M 14	1	1
F 74	9375.903* 196	tubo el.valv.-pm iniez./fuel hose	1	1
F 75	9375.904* 196	tubo a el.valv./fuel hose	1	1
G 1	5066.250 196	lamiera conv.post./rear panel	1	1
G 2	9790.037 9	vite/screw M 6 X 8	2	2
G 3	5066.249 196	lamiera conv.lat./side panel	1	1
G 4	9790.037 9	vite/screw M 6 X 8	2	2
G 5	9732.084 9	vite/screw M 6 X 12	5	5
G 6	2569.498 196	convogliatore/shroud	1	1
G 7	2501.130 196	colonna/hollowstud	4	4
G 8	7986.028 196	scudo insonorizz./denoised guard	1	1
G 9	7625.007 9	rondella/washer diam.6	4	4
G 10	9732.084 9	vite/screw M 6 X 12	4	4
G 11	7625.007 9	rondella/washer diam.6	4	4
G 12	3855.130 196	coperchio/cover	1	1
G 13	7951.173 196	scatola senza autoavvolg./house	1	1
H 1	9730.010 9	vite/screw M 6 X 16	2	2
H 2	ex 9220.089 196	E -> da/from s.No. 3882887 -> CT 150003 ->	v	v
	ex 9220.090 196	E -> da/from s.No. 3882887 -> CT 150003 ->	v	v
	-> 9220.102 196	A testina filtro/oil filter head	1	1
	9220.099 196	per ft.olio a dist./for remote oil f.	1	1
H 3	1200.234 9	anello OR/O ring 53,70 X 1,78	1	1
	4400.071 196	per ft.olio a dist./for remote oil f.	1	1
H 4	ex 2175.129 - - - -	- - - - sostituito da/superseded by - - - - ->		
	-> 2175.155 196	I cartuccia/oil filter element	1	1
H 5	2280.061 9	chiavetta/key 3X3,7X10	1	1
H 6	1400.232 196	asta livello/oil dipstick	1	1
H 7	6605.090 196	pompa olio/oil pump	1	1
H 8	1111.165 196	alb. pompa olio/oil pump shaft	1	1
H 9	8836.210 196	supporto/oil pump support	1	1
H 10	7770.172 196	rullino/roller 3X15,8	1	1
H 11	9015.008 196	tappo/pressure valve plug	1	1
H 12	6495.056 196	pistoncino/drive rod	1	1
H 13	5625.008 107	molla valvola/press.valve spring	1	1
H 14	9730.012 9	vite/screw M 6 X 20	2	2
H 15	1200.034 9	anello OR/O ring	1	1
H 16	1400.233 196	asta livello/oil dipstick	1	1
H 17	7565.004 9	rondella/washer diam. 6	1	1
H 18	9330.078 196	tubo/dipstick tube	1	1
H 19	9732.084 9	vite/screw M 6 X 12	1	1

 Motore/Engine 15LD 315
 * * * * * 15LD 350



15LD 315 - 15LD 350
vedi Tavola Ric./see Parts Table 1.5302.453

Pos.	Matricola/Part No.	Note/Remarks	15LD 315	15LD 350
I 1	3200.002 9	dado/nut M 6	1	1
I 2+	7625.007 9	rondella/washer d.6	1	1
I 3+	vedi/see Pos. 9	1	1
I 4+	1200.041 9	anello OR/O ring 103/2018	1	1
I 5	9730.012 9	vite/screw M 6 X 20	4	4
I 6	3240.009 9	dado/nut M 6	2	2
I 7	9180.011 70	terminale/cable-end	2	2
I 8	ex 8510.134 - - - - - -> 8510.143 196 A	sostituito da/superseded by - - - - - > squadretta/bracket	1	1
I 9	=2750.312 196 =2750.332 196	COPERCHIO ACCEL. E STOP COMPLETO ACCEL.- STOP GOVERNOR COVER ASS.Y (Pos. 2-3-4-9-13-14-15-16-17-21-22- 23-27-28-29-30-31-39-40) COPERCHIO ACCEL. E STOP per minivett. ACCEL.- STOP GOV.COVER for microcar (Pos. 3-4-9-14-15-16-17-21-22-23- 27-28-29-30-31-39-40-49-50-51-52- 53-54-55)	1	1
I 10	4431.143 196	guarnizione/gasket	1	1
I 11	3240.063 9	dado/nut M 10	1	1
I 12	8576.072 196	supplemento/extra fuel device	1	1
I 13+	6760.047 9	prigioniero/stud M 6 X 16	1	1
I 14+	1200.041 9	anello OR/O ring 103/2018	1	1
I 15+	7625.105 9	rondella/washer d.8,2	1	1
I 16+	1240.002 9	anello seeger/circlip diam.8	1	1
I 17+	vedi/see Pos. 9/41	1	1
I 18	ex 8430.074 9	B -> fino a/until	v	v
I 19	ex 5200.873 196 (npd) -> 5200.953 196 A	-> da/from s.No. -> CT 150006 -> perno completo/pin ass.y	v	v
I 20	5801.534 196	molla/extra fuel spring	1	1
I 21+	vedi/see Pos. 9/41	1	1
I 22+	3240.008 9	dado/nut M 6	1	1
I 23+	vedi/see Pos. 9	1	1
I 24	ex 7625.274 196	non più montata/no longer fitted		
I 25	3240.153 9	dado/nut M 6	2	2
I 26	1760.027 9	bullone/bolt M 6 X 40 (max.)	1	1
I 27+	7625.105 9	rondella/washer d.8,2	1	1
I 28+	1240.002 9	anello seeger/circlip diam.8	1	1
I 29+	vedi/see Pos. 9/41	1	1
I 30+	vedi/see Pos. 9/41		
I 31+	3240.008 9	dado/nut M 6	1	1
I 32	5200.871 196	leva regol./governor lever	1	1
I 33	5655.220 196	molla reg./gover.spring 3600 R.P.M.	1	1
"	5655.245 196	molla reg./gover.spring 1500 R.P.M.	1	1
"	5655.191 196	molla reg./gover.spring 3000 R.P.M.	1	1
I 34	5200.872 196	leva/lever	1	1
I 35	5600.040 196	molla/spring	1	1
I 36	ex 5200.870 196 E -> 5200.954 196 A	-> da/from s.No. -> CT 150006 -> perno completo/pin ass.y	v	v
I 37	1760.029 9	bullone/bolt M 6 X 40 (min.)	1	1
I 38	5830.119 9	morsetto/nut	1	1
I 39+	7565.004 9	rondella/washer d.6	1	1
I 40+	7565.004 9	rondella/washer d.6	1	1
I 41	=2750.327 196	COMANDO A DISTANZA COMPLETO REMOTE CONTROL ASS.Y (Pos. 4-14-15-16-17-21-22-27-28-29- 30-31-39-40-41-42-43)	1	1
I 42+	vedi/see Pos. 41		

Motore/Engine 15LD 315
 " " 15LD 350


15LD 315 - 15LD 350
vedi Tavola Ric./see Parts Table 1.5302.453

Pos.	Matricola/Part No.	Note/Remarks	15LD 315	15LD 350
I 43+	vedi/see Pos. 41		
I 44	9790.030 9	vite/screw M 6 X 30	1	1
I 45	7565.004 9	rondella/washer d.6	1	1
I 46	7626.047 9	rondella/washer d.6	1	1
I 47	6927.373 196	protezione/guard	1	1
I 48	5655.230 196	molla ritorno leva stop/spring	1	1
I 49+	1760.034 9	bullone/bolt M 6 X 25	1	1
I 50+	3203.050 9	dado autoblocc./nut M 6	1	1
I 51+	5715.060 9	molla a tazza/washer	1	1
I 52+	7625.274 196	rondella tenuta/washer	1	1
I 53+	5655.244 196	molla registr.minimo/minimum spring	1	1
I 54+	3240.008 9	dado/nut M 6	2	2
I 55+	vedi/see Pos. 9		
I 56	ex -> 3240.008 9 A	-> da/from s.No. -> CT 150006 -> dado/nut M 6	1	1
I 57	ex -> 7565.004 9 A	-> da/from s.No. -> CT 150006 -> rondella/washer d.6	1	1
L 1+	vedi/see Pos. 7		
L 2+	vedi/see Pos. 7		
L 3+	vedi/see Pos. 7		
L 4+	vedi/see Pos. 7		
L 5+	vedi/see Pos. 7		
L 6	9032.068 196	tappo olio/filler oil cap	1	1
L 7	=2125.252 196	CAPPELLO COMPL./ROCK.ARM COVER ASS.Y (Pos. 1-2-3-4-5-7-18-20-21-22-25)	1	1
L 8	9732.016 9	vite/screw M 6 X 40	3	3
L 9	3240.161 196	dado/safety nut	2	2
L 10	3300.222 196	dado/special nut	2	2
L 11	1541.176 196	bilancere/rocker arm	2	2
L 12	9850.116 196	vite registro/adjustment screw	2	2
L 13	ex 3203.047 - - - - - -> 3240.164 9 I	sostituito da/superseded by - - - - -> dado/nut M 8	2	2
L 14	5151.100 196	lamiera/panel	1	1
L 15	6760.100 9	prigioniero/stud M 6 X 45	2	2
L 16	1862.146 196	bullone/fixing head bolt	4	4
L 17	7625.130 105	rondella/washer	4	4
L 18+	vedi/see Pos. 7		
L 19	6780.027 9	prigioniero/stud M 8 X 50	1	1
L 20+	vedi/see Pos. 7		
L 21+	vedi/see Pos. 7		
L 22+	vedi/see Pos. 7		
L 23	9732.078 9	vite/screw M 6 X 25	2	2
L 24	4400.058 196	guarniz.cappel./gasket	1	1
L 25+	9820.077 90	vite/screw M 2,9 X 6,5	5	5
L 26	6410.108 196	piattello semic./cup-half collets	2	2
L 27	5755.117 196	molla valvola/valve spring	2	2
L 28	3430.114 196	dischetto/cup	2	2
L 29	4535.015 107	guarnizione/valve gasket	2	2
L 30	=9200.487 196	TESTA CON SEDI E GUIDE CYLINDER HEAD WITH SEATS AND GUIDES (Pos. 30-31-32-34-35)	1	1
L 31+	4845.218 196	guida valv.asp./inlet valve guide	1	1
Motore/Engine	15LD 315		
	15LD 350		



15LD 315 - 15LD 350
vedi Tavola Ric./see Parts Table 1.5302.453

Pos.	Matricola/Part No.	Note/Remarks	15LD 315	15LD 350
L 32+	8000.174 196	sede valv.aspir./inlet valve seat	1	1
L 33	4730.473 196	guarn.testa/head gask.0,9 d.78,5 (0)	1	1
"	4730.474 196	guarn.testa/head gask.1,0 d.78,5 (1)	1	1
"	4730.475 196	guarn.testa/head gask.1,1 d.78,5 (2)	1	1
"	4730.476 196	guarn.testa/head gask.1,2 d.78,5 (3)	1	1
"	4730.650 196	guarn.testa/head gask.0,9 d.79,5 (0)*	1	1
"	4730.652 196	guarn.testa/head gask.1,0 d.79,5 (1)*	1	1
"	4730.654 196	guarn.testa/head gask.1,1 d.79,5 (2)*	1	1
"	4730.656 196	guarn.testa/head gask.1,2 d.79,5 (3)*	1	1
"	4730.551 197	guarn.testa/head gask.1,0 d.82,5 (0)	-	1
"	4730.552 197	guarn.testa/head gask.1,1 d.82,5 (1)	-	1
"	4730.553 197	guarn.testa/head gask.1,2 d.82,5 (2)	-	1
"	4730.554 197	guarn.testa/head gask.1,3 d.82,5 (3)	-	1
"	4730.667 197	guarn.testa/head gask.1,0 d.83,5 (0)*	-	1
"	4730.668 197	guarn.testa/head gask.1,1 d.83,5 (1)*	-	1
"	4730.669 197	guarn.testa/head gask.1,2 d.83,5 (2)*	-	1
"	4730.670 197	guarn.testa/head gask.1,3 d.83,5 (3)*	-	1
<p>(0) senza intagli/no semicircular cut (1) 1 intaglio/semicircular cut (2) 2 intagli/semicircular cuts (3) 3 intagli/semicircular cuts * + 1 mm sul diam.interno per rettificata camicia cilindro I° e II° maggiorazione. * + 1 mm on the internal diameter - to be used for 1st and 2nd oversized cylinder liner.</p>				
L 34+	8000.175 196	sede valv.scar./exh.valve sear	1	1
L 35+	4845.219 196	guida valv.scar./exh.valve guide	1	1
L 36	9652.130 196	valvola aspirazione/inlet valve	1	1
L 37	9685.133 196	valvola scarico/exhaust valve	1	1
L 38	8506.003 904	squadretta/lift eye	1	1
L 39	ex 6780.028 - - - - -	sostituito da/superseded by - - - - -	1	1
L 40	-> 6780.164 9 I	prigioniero/stud M 8 X 55	1	1
	7625.061 9	rondella/washer d.8,4	1	1
M 1+	4904.038 196	impugnatura completa/handgrip	1	1
M 2+	vedi/see Pos. 12		
M 3+	5025.094 196	dente/tooth	1	1
M 4+	5660.066 196	molla/spring	1	1
M 5+	5590.026 196	molla/spring	1	1
M 6+	vedi/see Pos. 12		
M 7+	1165.006 9	anello tenuta/circlip	1	1
M 8	6961.104 196	puleggia/pulley	1	1
M 9+	5025.094 196	dente/tooth	1	1
M 10+	vedi/see Pos. 12		
M 11	9730.309 9	vite/screw M 6 X 8	4	4
M 12	=1471.089 196	AVVIATORE AUTOAVV./REWIND STARTER	1	1
"	=1471.091 196	per mot.1500 g/for engine 1500 RpM (Pos. 1-2-3-4-5-6-7-9-10-12-13-14)	1	1
M 13+	5801.539 196	molla/spring	1	1
M 14+	7100.371 196	puleggia/pulley	1	1
M 15	9732.064 9	vite/screw M 8 X 30	3	3
Motore/Engine	15LD 315			
	15LD 350			


15LD 315 - 15LD 350
vedi Tavola Ric./see Parts Table 1.5302.453

Pos.	Matricola/Part No.	Note/Remarks	15LD 315	15LD 350
M 16	ex 5840.170 - -	(npd) -> da/from s.No. 3582963 -> CT 150001 ->		
	-> 5840.176 196	A motorino avv./starting motor 12 V	1	1
	5840.178 196	motorino avv./starting motor 24 V	1	1
M 17	ex 8565.077	B -> da/from s.No. 3582963 -> CT 150001 ->		
	-> 8565.078 196	A statore/alternator stator 12 V 12 A	1	1
	ex 8565.076	B -> da/from s.No. 3582963 -> CT 150001 ->		
	-> 8565.080 107	A statore/alternator stator 12 V 20 A	1	1
M 18	ex	-> da/from s.No. 3582963 -> CT 150001 ->		
	-> 7362.255 1830	A regol.tens./voltage regul.12 V 12 A	1	1
	7362.298 107	regol.tens./voltage regul.12 V 20 A	1	1
M 19	9730.044 9	vite/screw M 10 X 25	2	2
M 20	2145.014 276	cappuccio/rubber cap	1	1
M 21	9730.012 9	vite/screw M 6 X 20	3	3
M 22	ex 6745.044 - - -	- - - - - sostituito da/superseded by - - - - ->	v	v
	ex 6745.050 107	B -> da/from s.No. 3882887 -> CT 150003 ->	v	v
	-> 6745.052 107	A pressostato/pressure oil switch M 10	1	1
M 23	ex	-> da/from s.No. 3582963 -> CT 150001 ->		
	-> 2002.019 196	A rotore/electrical rotor 12 V 12/20 A	1	1
M 24	7625.007 9	rondella/washer diam.6	4	4
M 25	ex 4670.060 9	B -> da/from s.No. 3882887 -> CT 150003 ->	v	v
	-> 4670.060 9	A guarn.rame/copper gasket diam.10	1	1
M 26	4670.055 9	guarn.rame/copper gasket diam.12,5	1	1
M 27	2185.914 196	cavo collegamento/wire	1	1
M 28	3440.034 196	dispos.protezione/guard device	1	1
M 29	3800.039 196	flangia/flange	1	1
M 30	9732.041 9	vite/screw M 10 X 18	2	2
M 31	9732.074 9	vite/screw M 8 X 20	2	2
M 32	9195.085 196	termostato/oil thermostat	1	1
M 33	7245.359 196	quadretto/electr.panel 12 V	1	1
M 34	5041.020 276	interruttore/key switch	1	1
M 35	2185.882 107	prolunga/wire extension	1	1
M 36	2185.908 196	cavo per solo spia carica batteria	1	1
		el.wire for battery light only		
	2185.907 196	cavo per spia c.batt.e spia olio	1	1
		el.wire for batt.light and oil warn.		
N 1	=8180.179 196	SERIE GUARNIZIONI/GASKET SET	1	-
	=8180.199 197	SERIE GUARNIZIONI/GASKET SET (Pos. A 18-A 19-A 26-F 25-H 3-I 10- L 24-L 29-L 33)	-	1

Motore/Engine 15LD 315
 " " 15LD 350



15LD 315 - 15LD 350
vedi Tavola Ric./see Parts Table 1.5302.453

15LD 315

15LD 350

Pos. Matricola/Part No. Note/Remarks

TABELLA ALBERI A GOMITO SPECIALI/SPECIAL CRANKSHAFT LIST

tipo type	per motori senza equilibratore for engines without equalizer device	per motori con equilibratore for engines without equalizer device
Ext 4 SAE	1050.889	1050.890
Ext 6 SAE	1050.891	1050.892
Ext 3 SAE	1050.911	1050.912
Ext 9 SAE	1050.913	1050.914
Ext a 4	1050.915	1050.916
Ext 7 SAE	1050.933	-
Ext M 8 interc. B & S	1050.945	-

Motore/Engine 15LD 315
15LD 350