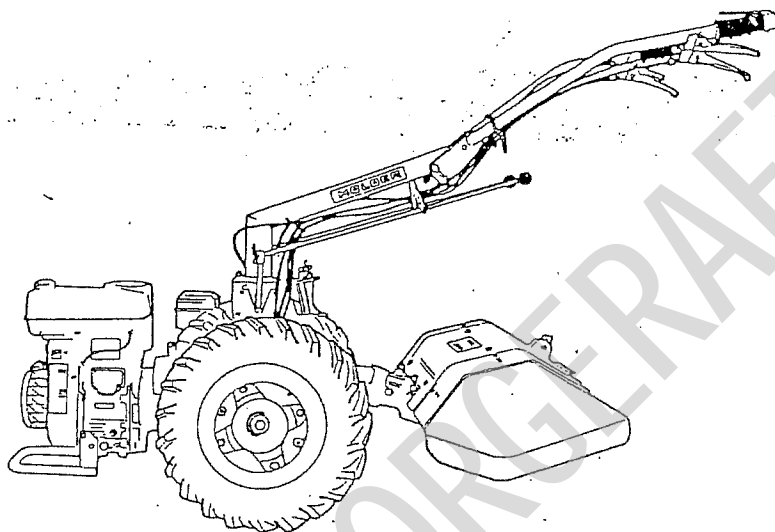


# Ersatzteilliste

## E 300/E 300 D

### (Typ 1700-5/ -6)



Indexplan

Spalte

## Robin Motor Ey 28

Hinweise zur Anwendung des Mikrofilms

Lombardini Benzinmotor IM 350 / *IM350 NEU*  
*von Lombardini*

Lombardini Dieselmotor 6LD 360 / *15LD 350*

Grundmaschine

*Neumotor*

7 - 10

Mähantrieb, Mähbalken

*Best. Nr. 832950010-A*

11 - 12

Hackfräse

13 - 14

ERSATZTEILE FÜR STANDARD-  
MOTOREN.

FÜR SONDERANFERTIGUNGEN SIEHE  
ERSATZTEILKATALOG BEI SERVICE  
WERKSTÄTTEN.

# Alte Ausführung E300D

REPUESTOS PARA MOTORES  
STANDARD.

PARA APLICACIONES VEASE  
CATALOGO EN LAS ESTACIONES  
SERVICE.

PEÇAS DE TROCA PARA MOTOR  
STANDARD.

PARA APLICAÇÕES ESPECIAIS  
CONSULTAR O CATÁLOGO NOS  
CENTROS DE ASSISTÊNCIA E PEÇAS

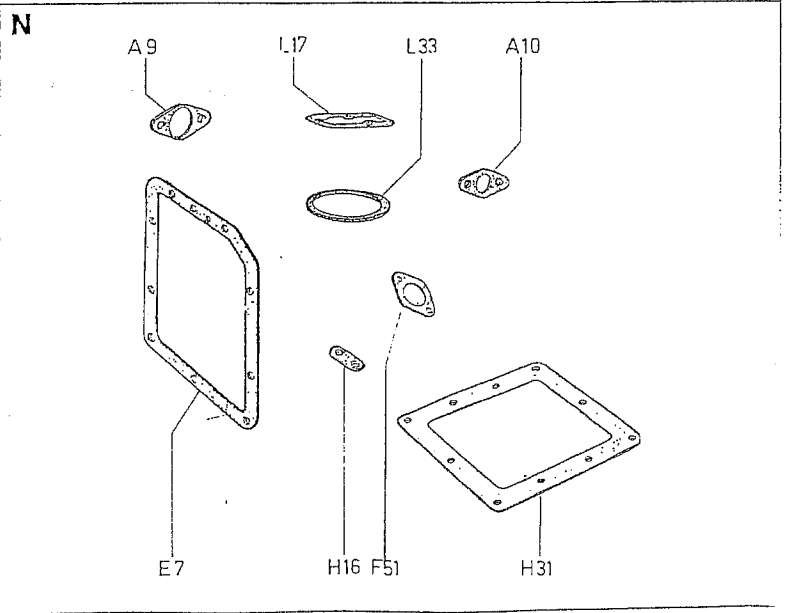
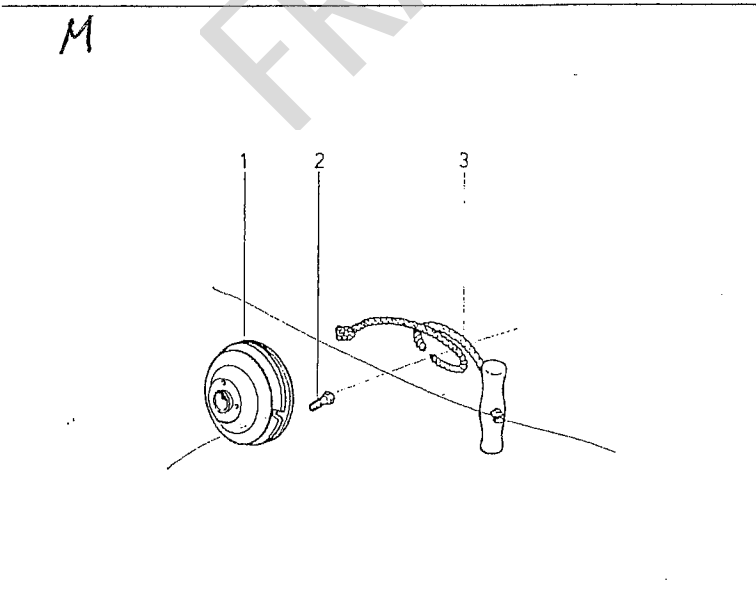
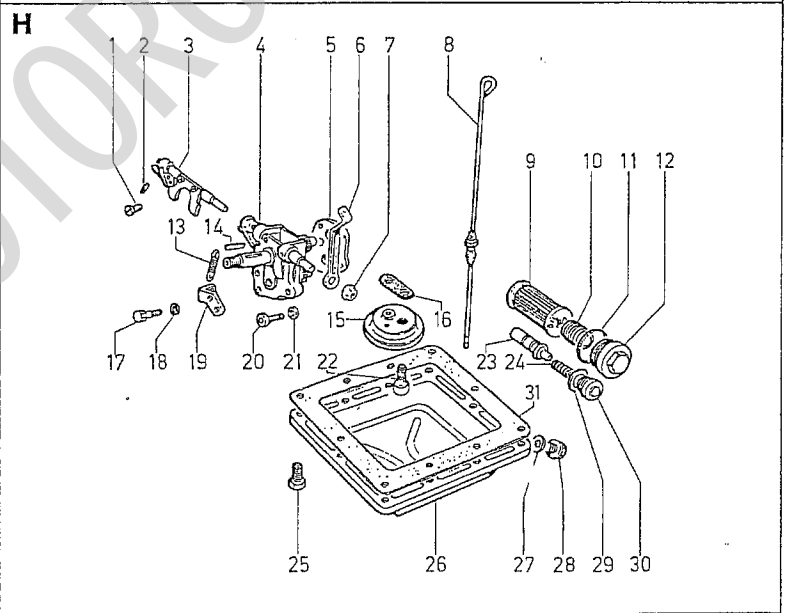
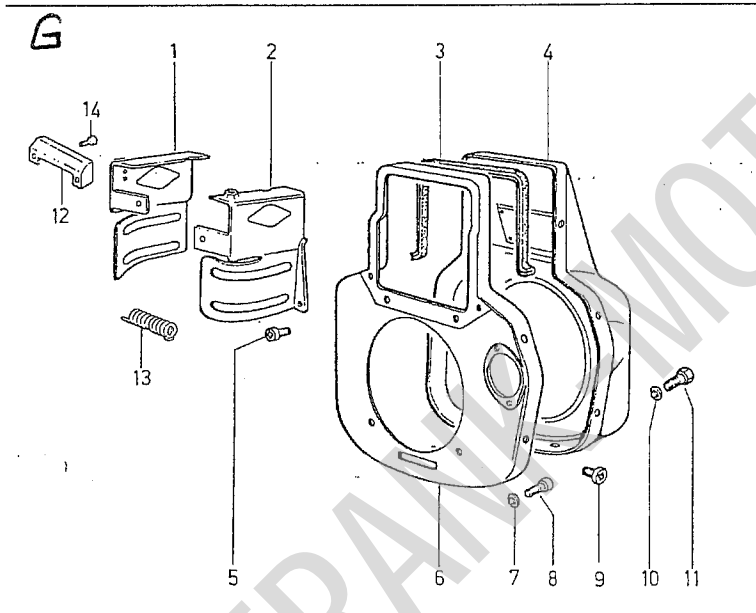
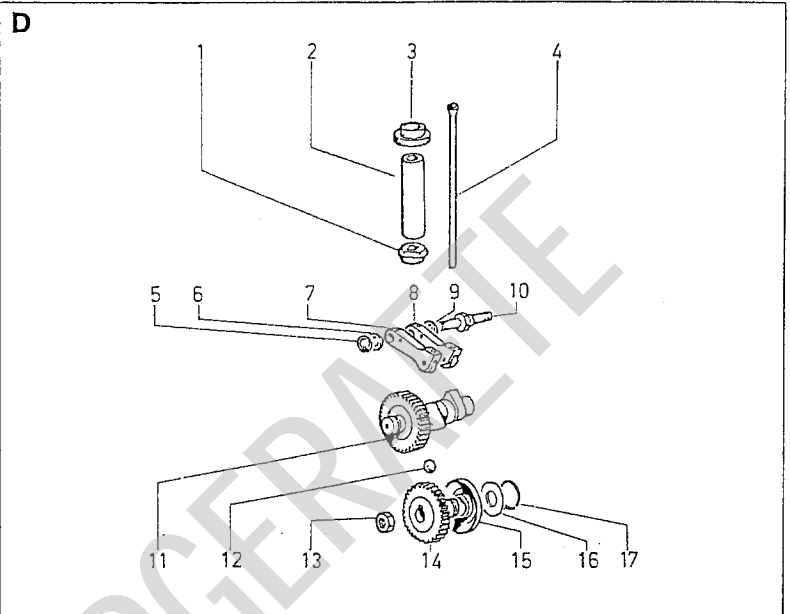
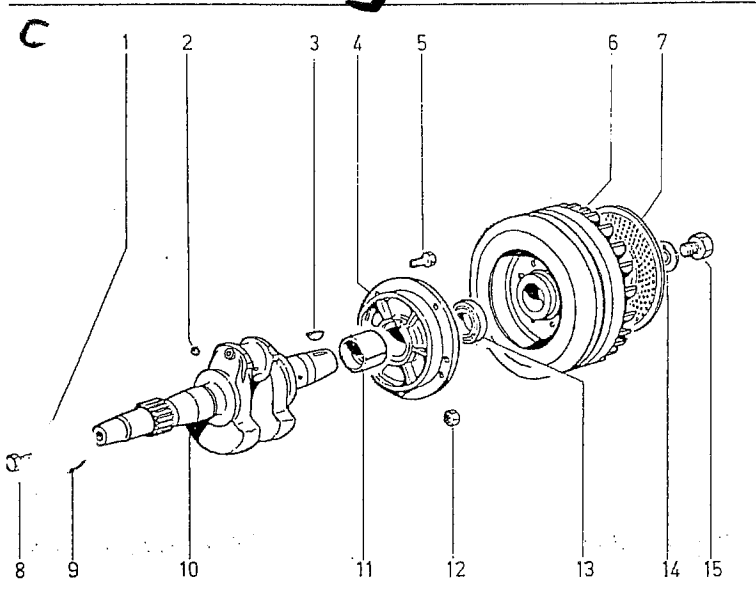
# 6LD360

GRUPPO

6

K-AGR.

Matricola: 1.5302.426



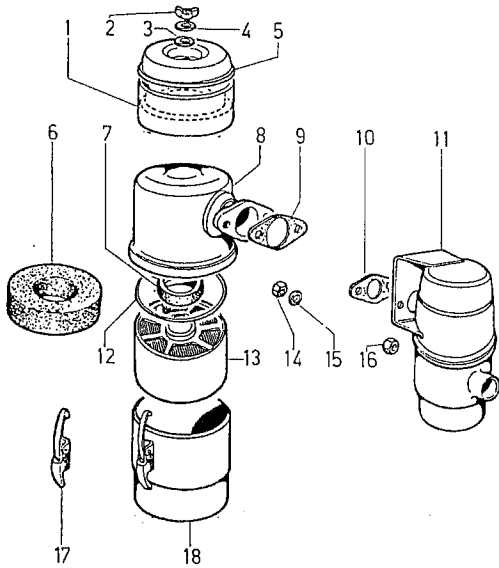
**RICAMBI**  
**PIECES**  
**SPARE PARTS**  
**ERSATZTEILE**  
**REPUESTOS**  
**RECAMBIOS**

**RICAMBI PER MOTORE STANDARD.**  
**PER APPLICAZIONI SPECIALI**  
**CONSULTARE IL CATALOGO PRESSO I**  
**CENTRI ASSISTENZA E RICAMBI.**

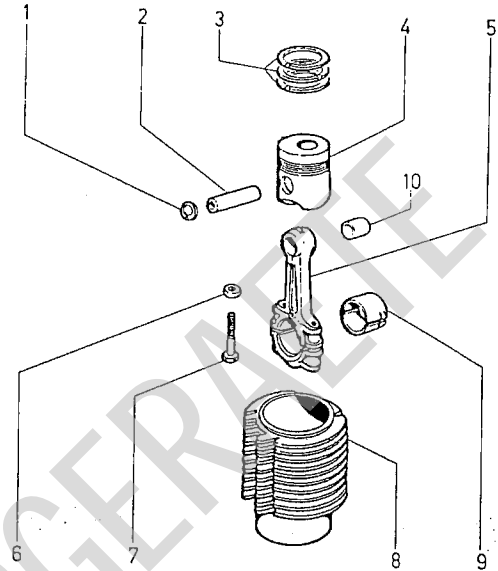
**PIECES POUR DES MOTEURS**  
**STANDARD.**  
**POUR LES ADAPTATIONS CONSULTER**  
**LE CATALOGUE AUPRES DES AGENTS**  
**SERVICE.**

**SPARE PARTS FOR STANDARD**  
**ENGINE.**  
**FOR SPECIAL APPLICATIONS SEE**  
**MASTER CATALOG AT SERVICE**  
**CENTERS.**

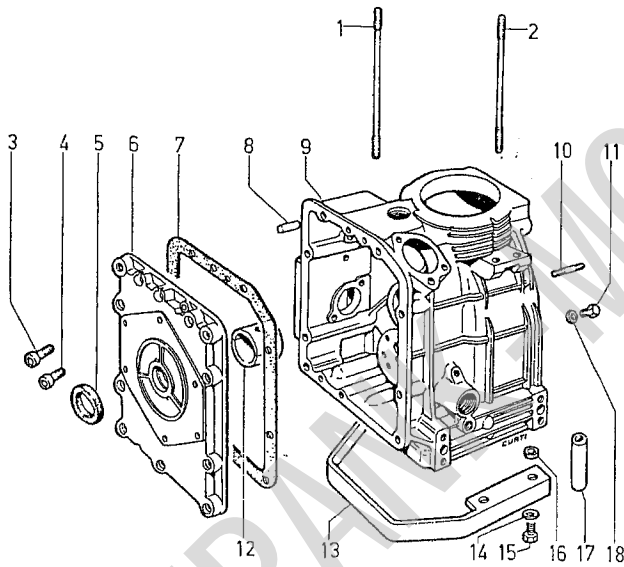
**A**



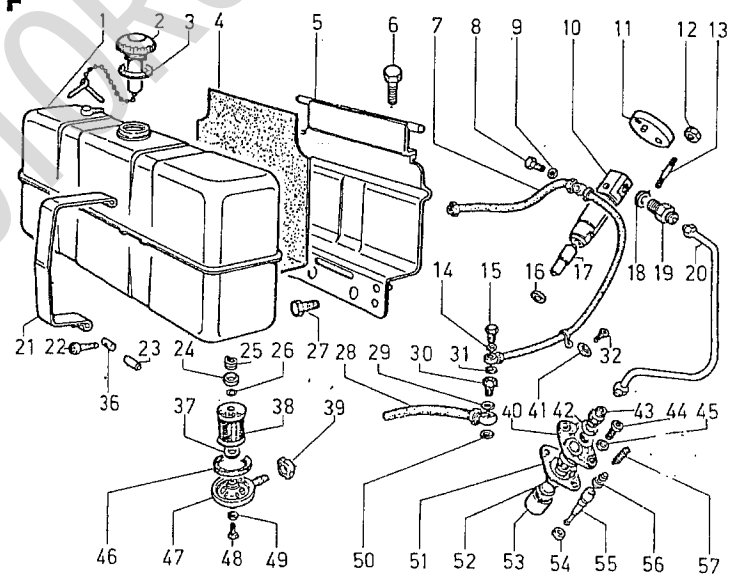
**B**



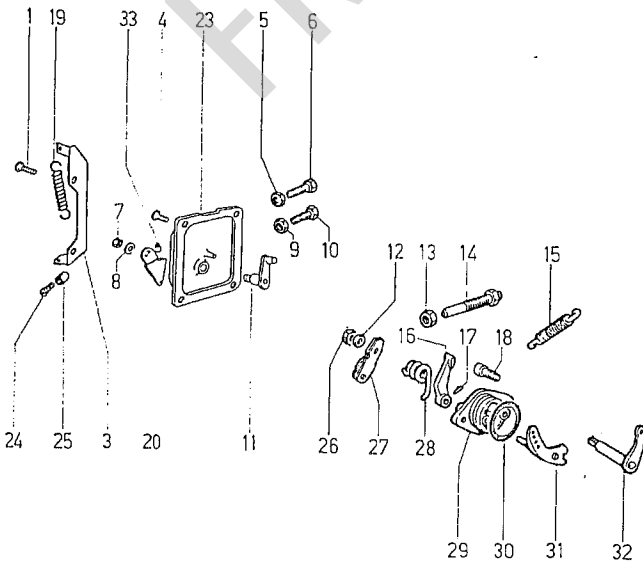
**E**



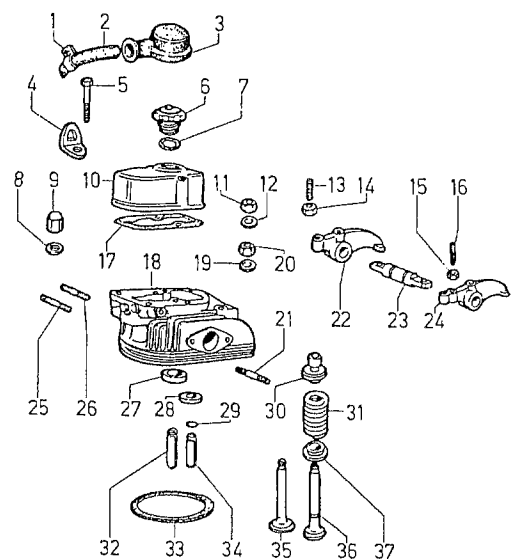
**F**



**I**



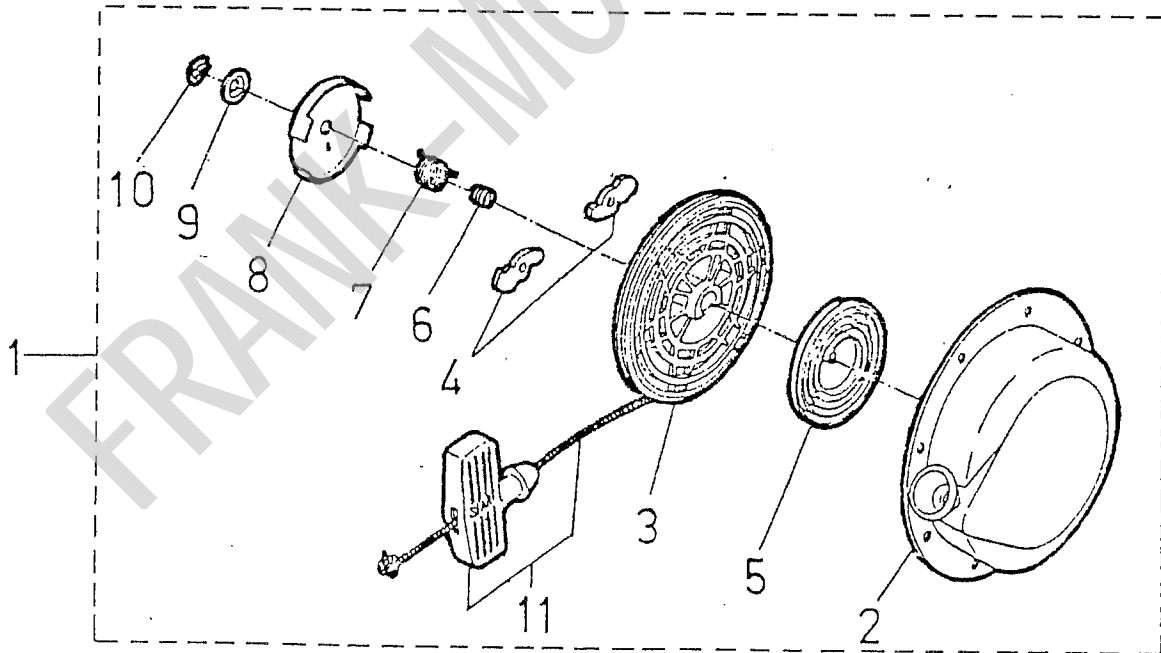
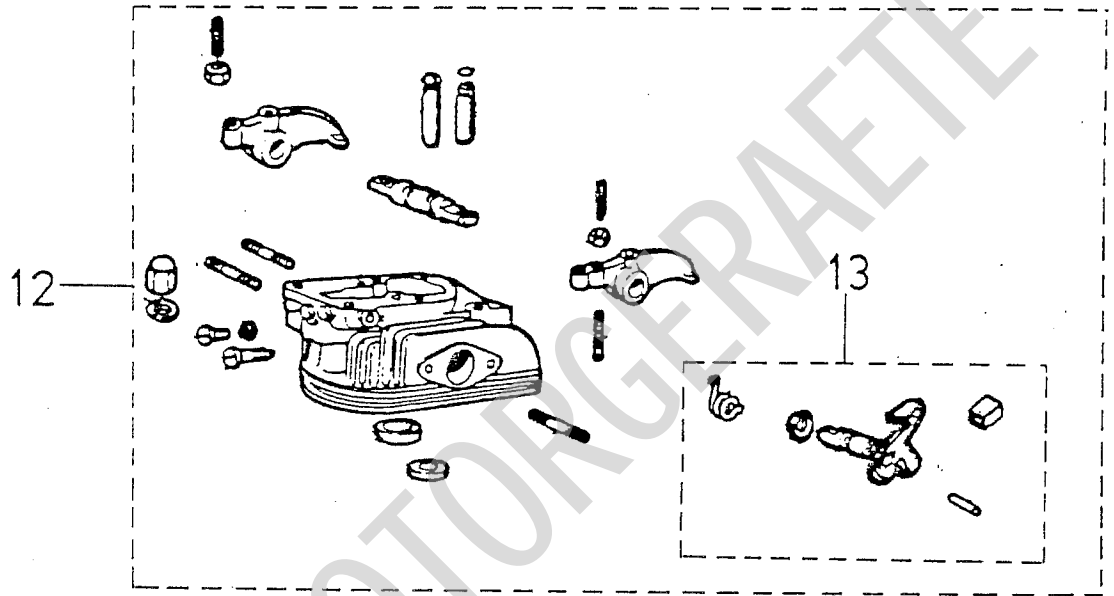
**L**



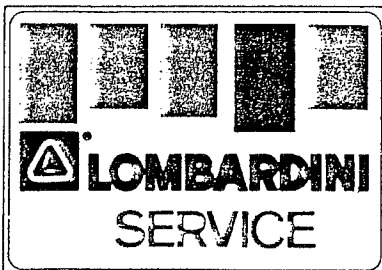
E 300 D

EINZELTEILE REVERSIERSTARTER

MOTORTYP 6 LD



Mod. 1867 - Printed in Italy -



CIRCOLARE TECNICA  
CIRCULAIRE TECHNIQUE  
SERVICE LETTER  
TECHNISCHES RUNDSCHREIBEN  
CIRCULAR TECNICA

Sez. Sect.
N°



Gr. 6  
K - AGR.

TAVOLA RICAMBI SPARE PARTS TABLE TABLEAU PIECES DETACHEES. 1.5302.426

\*\*\*\*\*

Maggio/May/Mai 1992

\*\*\*\*\*

MOTORI/ENGINES/MOTEURS Gr. 6 K - AGR.  
MOTOZAPPA, MOTOCOLTIVATORE, MOTOFALCIATRICE  
MOTORHOE, MOTORCULTIVATOR, MOTOR MOWER  
MOTOHOUE, MOTOCULTEUR, MOTOFAUCHEUSE

Colonna/Column/Colonna	1	=	6LD 325 K - AGR.	Version std.	710104
"	"	"	2 = 6LD 360 K - AGR.	" "	722072
"	"	"	3 = 6LD 400 K - AGR.	" "	718892
"	"	"	4 = 6LD 435 K - AGR.	" "	727690

Vedi/See/Voir

Libretto Uso e Man./Use-Maint.booklet/Livret Emploi-Entret. ....	1.5302.385
Libretto Service/Service directory/Rseau S.A.V. ....	1.7968.002
Serie accessori/Accessory set/Jeu accessoires .....	283.8140.080

note/remarks/ramarques

- F - alta movimentazione/fast moving part/haut mouvement.
- S - media movimentazione/medium moving part/moyen mouvement.
- D - bassa movimentazione/slow moving part/bas mouvement.
- E - ad esaurimento/exhausting part/piece en epuisement.
- N - particolare nuovo o fornito su richiesta/  
-new part or part supplied upon request/  
-piece nouvelle ou fournie sur demande.
- A - valido dal motore.../from eng.S.No.../à partir du moteur... \*
- B - valido fino al motore.../up to eng.S.No.../jusqu'au moteur... \*
- I - intercambiabile/interchangeable. \*
- \* (vedi Circolare Tecnica/see Service Letter/voir Circ.Techn.)
- V - stock per Off.Service/stock for Service Dealer/stock pour Stations Service
- C - stock vitale per Costruttori, Esportatori, Enti di Stato.  
vital stock for Producers, Exporters, State Companies.  
stock vital pour Constructeurs, Export., Institut. de l'Etat.
- R - stock Rattif./Grinding Workshops stock/stock pour Usines de Rectification
- 10/50/2-q.ta minima fornibile/min.supplied q.ty/q.te min.fournie.
- = gruppo completo/assembly/groupa complet.
- + componente del gruppo/assembly component/composant du groupe.

Serie guarnizioni/Gasket set/Jeu de joints .	6LD 325	.....	520.8180.092
	6LD 360	.....	530.8180.082
	6LD 400-6LD 435	.....	540.8180.063

Descrizioni non impegnative/Subject to modifications/Modifications réservés  
TECO/ATL/Assistenza Tecnica Lombardini/Maggio 1992

Riquadro/Drawing/Dessin A ASPIRAZIONE E SCARICO INTAKE AND EXHAUST ADMISSION ET ECHAPPEMENT	Riquadro/Drawing/Dessin G RAFFREDDAMENTO COOLING SYSTEM CIRCUIT DE REFROIDISSEMENT
Riquadro/Drawing/Dessin B CILINDRO, BIELLA E PISTONE CYLINDER, CONNECTING ROD AND PISTON SET CYLINDRE, BIELLE ET PISTON	Riquadro/Drawing/Dessin H CIRCUITO DI LUBRIFICAZIONE LUBRICATING SYSTEM CIRCUIT DE LUBRIFICATION
Riquadro/Drawing/Dessin C ALBERO A GOMITO, SUPPORTO E VOLANO CRANKSHAFT, FLYW. SIDE SUPPORT AND FLYWHEEL VILEBREQUIN, PALIER ET VOLANT	Riquadro/Drawing/Dessin I COMANDI CONTROLS COMMANDES
Riquadro/Drawing/Dessin D DISTRIBUZIONE E REGOLATORE DI GIRI TIMING AND SPEED GOVERNOR DISTRIBUTION ET REGULATEUR DE VITESSE	Riquadro/Drawing/Dessin L TESTA, CAPPELLO BILANCIERI E VALVOLE CYLINDER HEAD, ROCKER ARM BOX AND VALVES CULASSE, COUV. CULBUTEURS ET SOUPAPES
Riquadro/Drawing/Dessin E BASAMENTO, PORTINA LATO DISTRIBUZIONE E PIEDI CRANKCASE, COVER GEAR AND MOUNTS CARTER MOTEUR, CARTER COTE DISTRIB., PIEDS	Riquadro/Drawing/Dessin M AVVIAMENTO STARTING DEMARREUR
Riquadro/Drawing/Dessin F CIRCUITO COMBUSTIBILE FUEL SYSTEM CIRCUIT CARBURANT	Riquadro/Drawing/Dessin N COMPOSIZIONE SERIE GUARNIZIONI/ANELLI GASKET/O RING SET COMPOSITION COMPOSITION SERIE JOINTS/BAGUES

Pos.	Matricola/Part No.	Note/Remarks	Q.ty/Eng.
A 1+	1301.053 500 FV C 10	prefiltro/prefilter	1 1 1 1
A 2+	3200.002 '9 FV C 10	dado/nut	1 1 1 1
A 3+	4775.137 9140 N 10	guarnizione/gasket	1 1 1 1
A 4+	7625.092 9 D C 10	rondella/washer	1 1 1 1
A 5+	2125.055 500 F C	cappello prefiltro/prefilter cover	1 1 1 1
A 6+	5496.113 500 SV C	massa filtr./filt.element Diam.=124	1 1 1 1
A 7+	1261.072 500 FV C 10	anello/seal ring H=17,6 Diam.= 54	1 1 1 1
A 8	=3700.109 540 FV C	FILTRO ARIA/AIR CLEANER (Pos. 1-2-3-4-5-6-7-8-12-13-17-18)	1 1 1 1
A 9	4500.092 500 FV C 10	guarnizione/gasket	1 1 1 1
A 10	4500.091 500 FV C 10	guarnizione/gasket	1 1 1 1
A 11	5462.089 500 F C	marmitta/muffler	1 1 1 1
A 12+	4775.120 500 FV C 10	guarnizione/gasket H=10 Diam.=135	1 1 1 1
A 13+	5496.071 500 SV C	massa/filt.element H=90 Diam.=119	1 1 1 1
A 14	3240.018 9 FV 10	dado/nut	2 2 2 2
A 15	7565.007 9 F C 10	rondella/washer	2 2 2 2
A 16	3240.095 9 FV C 10	dado/nut	2 2 2 2
A 17+	4115.048 276 F C 10	gancio/hook	2 2 2 2
A 18+	.....	vedi/see Pos. 8	
B 1+	1240.017 9 FV C 10	anello seeger/snap ring	2 2 2 2
B 2+	8480.075 530 S IC	spinotto/gudgeon pin	1 1 1 1
"	8480.060 540 D IC	"	1 1 1 1
B 3+	8211.078 520 FV C	serie segmenti/ring set std.	1 1 1 1
"	8211.079 520 F CR	" "+0,50	1 1 1 1
"	8211.080 520 F CR	" "+1,00	1 1 1 1
"	8211.045 530 FV C	" " std.	1 1 1 1
"	8211.046 530 F CR	" "+0,50	1 1 1 1
"	8211.047 530 F CR	" "+1,00	1 1 1 1
"	8211.056 540 FV C	" " std.	1 1 1 1
"	8211.017 540 F CR	" "+0,50	1 1 1 1
"	8211.018 540 F CR	" "+1,00	1 1 1 1
B 4	=6500.808 520 FVAC	PISTONE COMPLETO/PISTON SET std.	1 1 1 1
"	=6500.809 520 F ACR	" "+0,50	1 1 1 1
"	=6500.810 520 F ACR	" "+1,00	1 1 1 1
"	=6500.733 530 FVAC	" " std.	1 1 1 1
"	=6500.734 530 F ACR	" "+0,50	1 1 1 1
"	=6500.735 530 F ACR	" "+1,00	1 1 1 1
"	=6500.730 540 FVAC	" " STD.	1 1 1 1
"	=6500.731 540 F ACR	" "+0,50	1 1 1 1
"	=6500.732 540 F ACR	" "+1,00	1 1 1 1
"	=6500.811 550 FV C	" " std.	1 1 1 1
"	=6500.812 550 F CR	" "+0,50	1 1 1 1
"	=6500.813 550 F CR	" "+1,00	1 1 1 1
		(Pos. 1-2-3-4)	
B 5	=1526.030 500 F C	BIELLA COMPLETA/CONNECTING ROD (Pos. 5-6-7)	1 1 1 1
"	=1526.135 550 F C	BIELLA COMPLETA/CONNECTING ROD (Pos. 5-6-7-10)	1 1 1 1
B 6+	7626.048 9 S C 10	rondella/washer	2 2 2 2
B 7+	1770.083 9 FV C 10	bullone/bolt M 8 X 1,25 X 50	2 2 2 2
B 8	2380.299 520 FVAC	cilindro/cylinder	1 1 1 1
"	2380.275 530 FVAC	" "	1 1 1 1
"	2380.298 540 FVAC	" "	1 1 1 1
"	2380.461 550 FV C	" "	1 1 1 1
B 9	1640.066 360 FV C	bronz.biella/large end bushing std.	1 1 1 1
"	1640.067 360 F CR	" " -0,25	1 1 1 1
"	1640.068 360 F CR	" " -0,50	1 1 1 1
B 10+	1630.010 500 SV CR	bronz.piede/small end bushing	1 1 1 1
C 1	7625.060 9 S C 10	rondella/washer	1 1 1 1
C 2+	9000.069 500 S 10	tappo/expansion plug	2 2 2 2
C 3+	2280.048 9 FV C 10	chiavetta 1.vol./flywheel side key	1 1 1 1
C 4	8675.135 500 F AC	supporto/crankshaft support	1 1 1 1
C 5	1760.001 9 FV 10	bullone/bolt M 6 X 1 X 10	4 4 4 4
C 6	9882.027 5000 N	vol.imp.luce/light.syst.flywheel	1 1 1 1
"	9880.305 540 N	" "	1 1 1 1
"	9880.129 540 N A	" "	1 1 1 1
Motore/Engine: 6LD 325 K - AGR. Versione/Version 710104			
" " 6LD 360 K - AGR. " " 722072			
" " 6LD 400 K - AGR. " " 718892			
" " 6LD 435 K - AGR. " " 727690			



Pos.	Matricola/Part No.	Note/Remarks	Q.ty/Eng.
C 7	5095.076 500 F C	lamiera/panel	1 1 1 1
C 8	1770.039 9 S C 10	bullone/bolt M 8 X 1,25 X 28	1 1 1 1
C 9	1257.008 500 FV C 10	anello reggispinta/thrust washer	1 1 1 1
C 10	=1050.115 500 F C	ALBERO GOMITO/CRANKSHAFT (con.300 mm)	1 1 1 1
"	=1050.669 550 S C	" " " "	1 1 1 1
		(Pos. 2-3-10)	
C 11	1611.012 500 FV C	br.l.volano/flywheel side bear. std.	1 1 1 1
"	1611.013 500 F CR	" " -0,50	1 1 1 1
"	1611.014 500 F CR	" " -1,00	1 1 1 1
C 12	3203.047 9 FV C 10	dado/nut	5 5 5 5
C 13	1210.092 9 FV C 10	anello tenuta/seal ring	1 1 1 1
C 14	7626.043 9 S C 10	rondella/washer	1 1 1 1
C 15	1800.030 9 F C 10	bullone/bolt	1 1 1 1
D 1	4740.025 500 FV C 10	guarnizione/lower gasket	1 1 1 1
D 2	9520.029 500 FVIC	TUBO PROTEZ./GUARD TUBE	1 1 1 1
D 3	4740.018 500 FV C 10	guarnizione/upper gasket	1 1 1 1
D 4	1410.016 500 FV C	asta punteria/push rod	2 2 2 2
"	1410.105 550 FV C	" " " "	2 2 2 2
D 5	1240.004 9 FV C 10	anello seeger/snap ring	1 1 1 1
D 6	7550.006 500 S C 10	rondella/washer	1 1 1 1
D 7	5271.054 500 F C	leva/lever	1 1 1 1
D 8	5271.054 500 F C	leva/lever	1 1 1 1
D 9	7550.006 500 S C 10	rondella/washer	1 1 1 1
D 10	6140.080 500 S C 10	perno/pin	1 1 1 1
D 11	1011.151 500 F C	albero camme/camshaft	1 1 1 1
D 12+	8245.009 9 F AC 10	sfera/ball (7/16"- mm 11,112)	6 6 6 6
D 13	3203.060 9 FV C 10	dado/nut	1 1 1 1
D 14	=7362.193 500 S AC	REGOLATORE DI GIRI/SPEED GOVERNOR (Pos. 12-14-15-16-17)	1 1 1 1
D 14+	4936.020 500 F AC	ingranaggio/gearwheel	1 1 1 1
D 15+	2086.100 500 S A	campana/governor bell (polyamid)	1 1 1 1
D 16+	7701.081 500 N A 10	rondella/thrust washer	1 1 1 1
D 17+	1160.011 500 DV C 10	anello/circlip	1 1 1 1
E 1+	6850.108 540 SV C	prig.lato distr./gear side stud	2 2 2 2
"	6850.182 550 SV C	" " " " " "	2 2 2 2
E 2+	6850.106 540 SV C	prig.lato volano/flywheel side stud	2 2 2 2
"	6850.181 550 SV C	" " " " " "	2 2 2 2
E 3	9732.063 9 S C 10	vite/screw M 8 X 1,25 X 35	9 9 9 9
E 4	9732.064 9 S 10	vite/screw M 8 X 1,25 X 30	1 1 1 1
E 5+	1213.056 9 FV C 10	anello tenuta/seal ring	1 1 1 1
E 6	=6645.220 530 F C	PORTINA DISTRIB./CASE COVER (Pos. 5-6)	1 1 1 1
E 7	4601.020 500 FV C 10	guarnizione/gasket 0,25	1 1 1 1
E 8+	8460.055 276 D C 10	spina/taper pin	2 2 2 2
E 9	=1510.216 520 D C	BASAMENTO/CRANKCASE	1 1 1 1
"	=1510.171 540 S C	" " " "	1 1 1 1
"	=1510.531 550 N	" " " "	1 1 1 1
		(Pos. 1-2-8-9-10)	
E 10+	6780.076 9 FV C 10	prigioniero/stud M 8 X 18 (34)	5 5 5 5
E 11	1770.001 9 D C 10	bullone/bolt M 8 X 1,25 X 12	1 1 1 1
E 12	1611.018 530 FV C	br.l.distrib./gear side bearing std.	1 1 1 1
"	1611.019 530 F CR	" " -0,50	1 1 1 1
"	1611.020 530 F CR	" " -1,00	1 1 1 1
E 13	6010.066 5000 N	pattino/guard pad	1 1 1 1
"	6010.075 550 N	" " " "	1 1 1 1
E 14	7625.012 9 FV C 10	rondella/washer	4 4 4 4
E 15	1770.007 9 F C 10	bullone/bolt	4 4 4 4
"	9730.100 9 F 10	vite/screw M 8 X 1,25 X 25	4 4 4 4
E 16	3527.004 720 F 10	distanziale/spacer	4 4 4 4
E 17	2500.094 5000 N	colonna/hallowstud	4 4 4 4
E 18	4670.058 9 FV C 10	guarnizione/copper gasket	1 1 1 1
Motore/Engine 6LD 325 K - AGR. Versione/Version 710104			
" " 6LD 360 K - AGR. " " 722072			
" " 6LD 400 K - AGR. " " 718892			
" " 6LD 435 K - AGR. " " 727690			

Pos.	Matricola/Part No.	Note/Remarks	Q.ty/Eng.			
F 1	=8103.038 500 F C	SERBATOIO/FUEL TANK (Pos. 1-2-3)	1	1	1	1
F 2	= 9043.025 2830 FV C	TAPPO SERBATOIO/FUEL TANK CAP (Pos. 2-3)	1	1	1	1
F 3+	4650.056 2700 DV C 10	guarnizione/gasket	1	1	1	1
F 4	4701.010 500 FV C 10	guarnizione/gasket	1	1	1	1
F 5	8866.053 500 F C	supp.l.dist./gear side tank support	1	1	1	1
F 6	1770.111 9 F C 10	bullone/bolt	2	2	2	2
F 7	9601.064 500 FV C 10	tubo spurgo/bleeding pipe (mm 530)	1	1	1	1
F 8	1901.029 9 FV C 10	bullone raccordo/connection bolt	1	1	1	1
F 9	4670.058 9 FV C 10	guarnizione/copper gasket	2	2	2	2
F 10	=6615.043 540 S C	PORTAPOLVERIZZATORE/NOZZLE-HOLDER (Pos. 10-17-18-19)	1	1	1	1
F 11	3790.042 500 S C	flangia/flange	1	1	1	1
F 12	3203.050 9 N 10	dado/nut	2	2	2	2
F 13+	6760.035 9 FV C 10	prigioniero/stud M 6 X 53 (65)	2	2	2	2
F 14	4670.058 9 FV C 10	guarnizione/copper gasket	1	1	1	1
F 15	1901.029 9 FV C 10	bullone raccordo/connection bolt	1	1	1	1
F 16	4670.065 9 SV C 10	guarnizione/copper gasket 1,50	1	1	1	1
F 17+	6531.104 395 FV C	polverizzatore/nozzle	1	1	1	1
F 18+	4650.037 260 DV C 10	guarnizione/gasket	1	1	1	1
F 19+	7301.006 500 DV C 10	raccordo/connection	1	1	1	1
F 20	9372.090 500 FV C	tubo mandata comb./fuel delivery pipe	1	1	1	1
F 21	=3617.010 500 F C 10	FACSETTA SERB./FUEL TANK STRAP (Pos. 21-22-36)	2	2	2	2
F 22+	9730.016 9 DV C 10	vite/screw M 6 X 1 X 35	2	2	2	2
F 23	9600.057 271 FV C 10	tubo/rubber spacer	2	2	2	2
F 24+	3930.019 273 F C 10	fondello/cup	1	1	1	1
F 25+	5575.006 273 FV C 10	molla/spring	1	1	1	1
F 26+	1200.032 9 FV C 10	anello OR/rubber oil seal	1	1	1	1
F 27	1770.111 9 F C 10	bullone/bolt	2	2	2	2
F 28	9375.204 500 FV C	tubo comb./fuel pipe (mm 142)	1	1	1	1
F 29	4670.060 9 FV C 10	guarnizione/copper gasket	1	1	1	1
F 30	1901.012 710 FV C 10	bullone raccordo/connection bolt	1	1	1	1
F 31	4670.058 9 FV C 10	guarnizione/copper gasket	1	1	1	1
F 32	9790.037 9 FV C 10	vite/screw	1	1	1	1
F 36+	1557.019 45 F C 10	blochetto/nut	2	2	2	2
F 37+	4490.017 273 FV C 10	guarnizione/gasket	1	1	1	1
F 38	=3730.028 500 FV C	FILTRO COMBUSTIBILE/FUEL FILTER (Pos. 24-25-26-37-38-46-47-48-49)	1	1	1	1
F 38+	2175.032 500 FV C	cartuccia comb./fuel filter element	1	1	1	1
F 39	3630.008 9 F C 10	fascetta/clamp	1	1	1	1
F 40	=6590.136 520 D C	POMPA INIEZIONE/INJECTION PUMP	1			
"	=6590.133 540 F C	" "	1	1		
"	=6590.192 550 F C	" "				1
		(Pos. 40-42-43)				
F 41	7625.008 9 D C 10	rondella/washer	1	1	1	1
F 42+	1200.031 9 FV C 10	anello OR/rubber oil seal	1	1	1	1
F 43+	7265.008 271 FV C 10	raccordo/connection	1	1	1	1
F 44	9730.100 9 F 10	vite/screw M 8 X 1,25 X 25	2	2	2	2
F 45	7625.010 9 FV C 10	rondella/washer	2	2	2	2
F 46+	4431.040 500 FV C 10	guarnizione/gasket	1	1	1	1
F 47	=2605.024 500 F C	COPERCHIO FILTRO/FILTER COVER ASS.Y (Pos. 47-48-49)	1	1	1	1
F 48+	1760.076 9 N	bullone/bolt	1	1	1	1
F 49+	1202.052 9 FV C 10	anello OR/rubber oil seal	1	1	1	1
F 50	4670.060 9 FV C 10	guarnizione/copper gasket	1	1	1	1
F 51	4580.023 500 N 50	guarnizione/gasket 0,30	1	1	1	1
"	4580.024 500 N 50	" " 0,50	1	1	1	1
"	4580.029 500 N 50	" " 0,10	1	1	1	1
"	4580.057 500 N 10	" " 0,10	1	1	1	1
F 52	6000.036 500 FV C 10	pastiglia/tappet	1	1	1	1
F 53	7215.035 500 FV C	punteria/tappet	1	1	1	1
F 54	6400.045 500 SV C 10	piattello/cup	1	1	1	1
Motore/Engine 6LD 325 K - AGR. Versione/Version 710104						
" " 6LD 360 K - AGR. " " 722072						
" " 6LD 400 K - AGR. " " 718892						
" " 6LD 435 K - AGR. " " 727690						





Pos.	Matricola/Part No.	Note/Remarks.	Q.ty/Eng.			
F 55	6578.041 520 FV C	pompante/plunger 6LD325	1			
"	6578.133 540 FV C	pompante/plunger 6LD360-400		1	1	
"	6578.162 550 FV C	" "				1
F 56	9672.029 540 D C	valvolina/delivery valve (mmc 15)	1			
"	9672.012 500 F C	" " (mmc 25)		1	1	1
F 57	5755.034 271 SV C 10	molla/spring	1	1	1	1
G 1	5066.111 540 N A	lamiera/airtight plate	1	1	1	
"	5066.198 550 S C	" " "				1
G 2	5066.112 540 N A	lamiera/airtight plate	1	1	1	
"	5066.199 550 S C	" " "				1
G 3	4570.010 530 FV C	guarnizione/gasket	1	1	1	1
G 4	2568.086 500 S C	convogliatore/shroud	1			
"	2569.058 540 S C	" " "		1	1	1
G 5	9790.037 9 FV C 10	vite/screw M 6 X 1 X 8	2	2	2	2
G 6	6370.154 520 D C	piastra/shroud plate	1			
"	6370.118 540 S C	" " "		1	1	
"	6370.266 550 S C	" " "				1
G 7	.....					
G 8	1770.111 9 F C 10	bullone/bolt M 8 X 1,25 X 18	4	4	4	4
G 9	9790.037 9 FV C 10	bullone/bolt M 6 X 1 X 8	6	6	6	6
G 10	7565.007 9 F C 10	rondella/washer	2	2	2	2
G 11	9731.030 9 D 10	vite/screw M 8 X 1,25 X 12	2	2	2	2
G 12	5055.031 550 N	lamierino/plate				1
G 13	5725.043 540 N A	molla/spring	1	1	1	1
G 14	9865.122 9 N 10	vite/screw				2
H 1	9810.002 9 D C 10	vite/screw	2	2	2	2
H 2	8430.023 9 S C 10	spina/locating pin	1	1	1	1
H 3	6140.351 530 DVAC	perno pompa olio/oil pump pin	1	1	1	1
H 4	=6605.066 530 SVAC	POMPA OLIO/OIL PUMP (Pos. 3-4-5-13-14-17-18-19)	1	1	1	1
H 5+	.....	vedi/see Pos. 4				
H 6	5200.363 500 S AC 10	leva/lever	1	1	1	1
H 7	3203.050 9 N A 10	dado/nut	1	1	1	1
H 8	1400.035 500 F C 10	asta livello/dipstick (mm 385)	1	1	1	1
H 9	2175.019 500 FV C	cartuccia olio/oil filter element	1	1	1	1
H 10	5725.032 500 FV C 10	molla/spring	1	1	1	1
H 11	1200.016 9 FV C 10	anello OR/rubber oil seal	1	1	1	1
H 12	9060.008 500 FV C	tappo filtro/filter cap	1	1	1	1
H 13+	5801.198 540 SVAC	molla/spring	1	1	1	1
H 14+	2200.013 9 S C 10	chiavetta/key	1	1	1	1
H 15	1745.002 5000 D C	bulbo/oil strainer	1	1	1	1
H 16	4776.016 500 S C 10	guarnizione/gasket	1	1	1	1
H 17+	9730.009 9 D AC 10	vite/screw M 6 X 1 X 12	1	1	1	1
H 18+	7565.004 9 F AC 10	rondella/washer	1	1	1	1
H 19+	6371.045 500 N A 10	piastra/plate	1	1	1	1
H 20	9730.016 9 DV C 10	vite/screw M 6 X 1 X 35	4	4	4	4
H 21	7565.004 9 F C 10	rondella/washer	4	4	4	4
H 22	9732.047 9 D C 10	vite/screw M 12 X 1,5 X 20	1	1	1	1
H 23	9680.013 560 SV C	valvola pressione/pressure oil valve	1	1	1	1
H 24	5755.049 500 FV C 10	molla/spring	1	1	1	1
H 25	1770.111 9 F C 10	bullone/bolt	6	10	6	
"	9730.100 9 F 10	vite/screw M 8 X 1,25 X 25				6
H 26	=6647.046 5000 S C	PORTINA DI FONDO/OIL PAN	1	1	1	
"	=6645.296 550 S C	" " "				1
		(Pos. 26-27-28)				
H 27+	4670.013 9 FV C 10	guarnizione/copper gasket	1	1	1	
"	4670.016 9 FV C 10	" " "				1
H 28+	8965.032 9 S C 10	tappo/plug	1	1	1	
"	8965.005 9 FV C 10	" " "				1
H 29	4670.088 9 N 10	guarnizione/copper gasket 18X24X1	1	1	1	1
H 30	9070.012 500 S C	tappo valvola/valve cap	1	1	1	1
H 31	4601.003 500 FV C 50	guarnizione/gasket				1
I 1	9790.047 9 FV C 10	vite/screw M 6 X 1 X 16	2	2	2	2
I 2						

Motore/Engine 6LD 325 K - AGR. Versione/Version 710104

" " 6LD 360 K - AGR. " " 722072

" " 6LD 400 K - AGR. " " 718892

" " 6LD 435 K - AGR. " " 727690

INDICE DELLE MODIFICHE/IMPROVEMENTS INDEX

Motori/Engines Gr. 6-K.AGR.

Pos.	Nuova matricola New Part No.	Vecchia matricola Old Part.No.	Vedi Circ.Tec. See Serv.Lett.	Q.ty/Eng.
B 2	8480.075 530 S IC	8480.023 500	60019,60020	1 1
"	8480.060 540 D IC	8480.030 395	60008	1 1
B 4	6500.808 520 FVAC	6500.318 520	60020	1 1
"	6500.809 520 F ACR	6500.319 520	60020	1 1
"	6500.810 520 F ACR	6500.320 520	60020	1 1
"	6500.733 530 FVAC	6500.238 530	60019	1 1
"	6500.734 530 F ACR	6500.239 530	60019	1 1
"	6500.735 530 F ACR	6500.238 530	60019	1 1
"	6500.730 540 FVAC	6500.150 540	60008	1 1
"	6500.731 540 F ACR	6500.151 540	60008	1 1
"	6500.732 540 F ACR	6500.152 540	60008	1 1
B 8	2380.299 520 FVAC	2380.177 520	60020	1 1
"	2380.275 530 FVAC	2380.172 530	60019	1 1
"	2380.298 540 FVAC	2380.132 540	60008	1 1
C 4	8675.135 500 F AC	8675.082 500	9104	1 1 1
C 6	9880.129 540 N A	9880.305 540	60023	1 1 1
D 2	9520.029 500 FVAC	9520.046 500	60008,60019, 60020	1 1 1
D 12	8245.009 9 F AC 10	8245.010 9	9102	6 6 6
D 14	=7362.193 500 S AC	7362.109 500	9103	1 1 1
D 14	4936.020 500 F AC	4936.047 540	9102	1 1 1
D 15	2086.100 500 S A	2085.072 500	9103	1 1 1
D 16	7701.081 500 N A 10	.....	9103	1 1 1
F 40	=6590.136 520 D IC	6590.074 520	9110	1 1 1
F 56	=9672.029 540 D AC	9672.012 500	9110	1 1 1
G 1	5066.111 540 N A	5066.053 540	60008,60019, 60020	1 1 1
G 2	5066.112 540 N A	5066.054 540	60008,60019, 60020	1 1 1
G 9	5725.043 540 N A	.....	60008,60019, 60020	1 1 1
H 3	6140.351 530 DVAC	6141.046 500	9102	1 1 1
H 4	=6605.066 530 SVAC	6605.064 520	9102	1 1 1
H 6	5200.363 500 S AC 10	5200.176 540	9102	1 1 1
H 7	3203.050 9 N A 10	.....	9102	1 1 1
H 13	5801.198 540 SVAC 10	5801.087 540	9102	1 1 1
H 17	9730.009 9 D AC 10	.....	9102	1 1 1
H 18	7565.004 9 F AC 10	.....	9102	1 1 1
H 19	6371.045 500 N A 10	.....	9102	1 1 1
I 2	.....	7565.004 9	60017	2 2 2
I 3	8900.338 5000 D A	8903.043 5000	60017	1 1 1
I 14	=8576.025 500 DVAC	8576.016 540	9101	1 1 1
I 15	5655.038 500 SVAC 10	5655.081 540	9102	1 1 1
I 19	5801.467 5000 SVAC 10	5655.036 710	60017	1 1 1
I 20+	5200.560 5000 N A	5204.083 5000	60017	1 1 1
I 21	.....	9180.011 70	60017	2 2 2
I 23	=2690.301 5000 S A	2691.082 5000	60017	1 1 1
I 29	=8785.075 500 S AC	8785.076 540	9102	1 1 1
I 33	1970.265 5000 N A 10	.....	60017	1 1 1
L 6	=9050.050 530 FVIC	9050.021 270	5153	1 1 1
L 24	4845.166 500 FVICR10	4845.071 500	9117	1 1 1
"	4845.167 500 FVICR10	4845.075 500	9117	1 1 1
L 32	4845.168 500 FVACR10	4845.030 500	9118	1 1 1
"	4845.169 500 FVACR10	4845.052 500	9118	1 1 1

Motore/Engine	6LD 325 K - AGR.	Versione/Version	710104
"	6LD 360 K - AGR.	"	722072
"	6LD 400 K - AGR.	"	718892
"	6LD 435 K - AGR.	"	727690

Pos.	Matricola/Part No.	Note/Remarks	Q.ty/Eng.			
I 3	8900.338 5000 D A	supporto/support	1	1	1	1
I 4	9790.039 9 FV C 10	vite/screw M 6 X 1 X 12	2	2	2	2
I 5	3240.008 9 FV 10	dado/nut	1	1	1	1
I 6	1760.029 9 D C 10	bullone/bolt M 6 X 1 X 30	1	1	1	1
I 7+	3240.008 9 FV 10	dado/nut	1	1	1	1
I 8+	7565.004 9 F C 10	rondella/washer	1	1	1	1
I 9	3240.008 9 FV 10	dado/nut	1	1	1	1
I 10	1760.029 9 D C 10	bullone/bolt M 6 X 1 X 30	1	1	1	1
I 11+	5202.060 500 S C 10	leva/lever	1	1	1	1
I 12+	7565.004 9 F C 10	rondella/washer	1	1	1	1
I 13+	3240.058 9 DV C 10	dado/nut	1	1	1	1
I 14	=8576.025 500 DVAC	SUPPLEMENTO COPPIA/EXTRA FUEL DEVICE (Pos. 13-14)	1	1	1	1
I 15	5655.038 500 SVAC 10	molla regolatore/governor spring	1	1	1	1
I 16+	.....	vedi/see Pos. 29				
I 17+	8420.002 9 S C 10	spina/locating pin	1	1	1	1
I 18	9730.010 9 S 10	vite/screw M 6 X 1 X 16	2	2	2	2
I 19	5801.467 5000 SVAC 10	molla/spring	1	1	1	1
I 20+	5200.560 5000 N A	leva/lever	1	1	1	1
I 21	.....					
I 22	3240.009 9 FV C 10	dado/nut	2	2	2	2
I 23	=2690.301 5000 S A	CONTROLLO A DISTANZA/REMOTE CONTROL (Pos. 7-8-11-20-23)	1	1	1	1
I 24	.....	vedi/see Pos. 25				
I 25	5830.119 10 FV C 10	morsetto/terminal	1	1	1	1
I 26+	3240.008 9 FV 10	dado/nut	1	1	1	1
I 27+	.....	vedi/see Pos. 29				
I 28+	5680.043 500 S C 10	molla/spring	1	1	1	1
I 29	=8785.075 500 S AC	SUPPORTO LEVA/LEVER SUPPORT (Pos. 12-16-17-26-27-28-29-30-31-32)	1	1	1	1
I 30+	1200.087 9 FV C 10	anello OR/rubber oil seal	1	1	1	1
I 31+	.....	vedi/see Pos. 29				
I 32+	.....	vedi/see Pos. 29				
I 33	1970.265 5000 N A 10	bussola/sleeve	1	1	1	1
L 1	3617.020 2760 S C 10	fascetta/strip fixing	1	1	1	1
L 2	9601.044 5000 FV C 10	tubo sfiato/breather pipe (mm 500)	1	1	1	1
L 3	2145.003 2830 FV C	cappuccio/cap	1	1	1	1
L 4+	8506.003 904 S C 10	squadretta/angle bracket	1	1	1	1
L 5+	9730.034 9 F C 10	vite/screw M 8 X 1,25 X 55	2	2	2	2
L 6	=9050.050 530 FVIC	TAPPO SFIATO/BREATHER CAP (Pos. 6-7)	1	1	1	1
L 7+	1200.014 9 FV C 10	anello OR/rubber oil seal	1	1	1	1
L 8	7625.212 9 N 10	rondella/washer	2	2	2	2
L 9	3230.030 9 SV C 10	dado lato distrib./gear side nut M 9	2	2	2	2
L 10	=2125.141 520 S C	CAPPELLO BILANC./ROCKER BOX CAP (Pos. 4-5-10)	1	1	1	1
L 11	3240.077 9 N 10	dado prig.fiss.testa l.vol./nut M 9	2	2	2	2
L 12	7565.010 9 F C 10	rond.prig.fiss.testa lato vol./washer	2	2	2	2
L 13+	9850.048 500 S C 10	vite/screw	1	1	1	1
L 14+	3240.008 9 FV 10	dado/nut	1	1	1	1
L 15+	3240.008 9 FV 10	dado/nut	1	1	1	1
L 16+	9850.048 500 S C 10	vite/screw	1	1	1	1
L 17	4400.023 540 FV C 50	guarnizione/gasket 0,50	1	1	1	1
L 18	=9200.131 540 S C	TESTA/CYLINDER HEAD (decompr.fitting) (Pos. 18-21-25-26-27-28-30-31-32-34-35-36-37-F 13)	1	1	1	1
L 19	7625.212 9 N 10	rondella l.vol./flywheel side washer	2	2	2	2
L 20	3240.076 9 FV C 10	dado lato volano/flywheel side nut	2	2	2	2
L 21+	6780.068 9 S C 10	prigioniero/stud M 8 X 18 (30)	2	2	2	2
L 22	=4330.048 550 S C	GRUPPO BIL./ROCKER ARM ASS.Y (Pos. 13-14-15-16-22-23-24)	1	1	1	1
Motore/Engine 6LD 325 K - AGR. Versione/Version 710104						
" " 6LD 360 K - AGR. " " 722072						
" " 6LD 400 K - AGR. " " 718892						
" " 6LD 435 K - AGR. " " 727690						
LOMBARDINI MOTORI F.I.M. S.p.a. Edizione dell'Issue of 15.05.1992						



Pos.	Matricola/Part No.	Note/Remarks	Q.ty/Eng.			
L 23+	6045.038 540 DV C	perno/rocker arm shaft	1	1	1	1
L 24+	.....	vedi/see Pos. 22				
L 25+	6780.010 9 F 10	prigioniero/stud M 8 X 22 (34)	1	1	1	1
L 26+	6780.071 9 SV C 10	prigioniero/stud M 8 X 28 (40)	1	1	1	1
L 27+	8000.036 283 FV CR10	sede v.aspiraz./inlet v.seat	1	1	1	1
L 28+	8000.037 283 FV CR10	sede v.scarico/exhaust v.seat	1	1	1	1
L 29	1160.008 500 FV C 10	anello/circlip	2	2	2	2
L 30+	6410.036 500 F C 10	piattello/retainer with half-collets	2	2	2	2
L 31+	5755.045 500 FV C 10	molla/spring	2	2	2	2
L 32+	4845.166 500 FVICR10	guida v.asp./inlet v.guide	1	1	1	1
"	4845.167 500 FVICR10	" " " " +0,50	1	1	1	1
L 33	4730.206 520 N 10	guarnizione testa/head gasket 0,55	1			
"	4730.159 520 N 10	" " " " 0,60	1			
"	4730.207 520 N 10	" " " " 0,65	1			
"	4730.160 520 SV C 10	" " " " 0,70	1			
"	4730.208 520 N 10	" " " " 0,75	1			
"	4730.161 520 N 10	" " " " 0,80	1			
"	4730.209 520 N 10	" " " " 0,85	1			
"	4730.162 520 N 10	" " " " 0,90	1			
"	4730.210 520 N 10	" " " " 0,95	1			
"	4730.163 520 N 10	" " " " 1,00	1			
"	4730.171 530 SV C 10	" " " " 0,50		1		
"	4730.180 530 SV C 10	" " " " 0,55		1		
"	4730.145 530 SV C 10	" " " " 0,60		1		
"	4730.181 530 SV C 10	" " " " 0,65		1		
"	4730.146 530 SV C 10	" " " " 0,70		1		
"	4730.182 530 SV C 10	" " " " 0,75		1		
"	4730.147 530 SV C 10	" " " " 0,80		1		
"	4730.183 530 SV C 10	" " " " 0,85		1		
"	4730.148 530 SV C 10	" " " " 0,90		1		
"	4730.184 530 SV C 10	" " " " 0,95		1		
"	4730.130 540 SV C 10	" " " " 0,50			1	1
"	4730.175 540 SV C 10	" " " " 0,55			1	1
"	4730.122 540 SV C 10	" " " " 0,60			1	1
"	4730.176 540 SV C 10	" " " " 0,65			1	1
"	4730.123 540 SV C 10	" " " " 0,70			1	1
"	4730.177 540 SV C 10	" " " " 0,75			1	1
"	4730.124 540 SV C 10	" " " " 0,80			1	1
"	4730.178 540 SV C 10	" " " " 0,85			1	1
"	4730.133 540 DV C 10	" " " " 0,90			1	1
"	4730.179 540 DV C 10	" " " " 0,95			1	1
L 34+	4845.168 500 FVACR10	guida v.scar./exhaust v.guide +0,50	1	1	1	1
"	4845.169 500 FVACR10	" " " " +0,50	1	1	1	1
L 35+	9652.040 520 FV CR	valvola aspirazione/inlet valve	1	1	1	1
L 36+	9685.051 520 FV CR	valvola scarico/exhaust valve	1	1	1	1
L 37+	3430.070 500 FV C 10	fondello/cup	2	2	2	2
M 1	6960.069 500 FV C	puleggia/pulley	1	1	1	1
M 2	1765.053 9 F C 10	bullone/bolt M 7 X 1 X 24	4	4	4	4
M 3	4055.003 283 F C	fune avviamento/rope starting	1	1	1	1
N 1	=8180.092 520 FV CR	SERIE GUARNIZIONI/GASKET SET	1			
"	=8180.082 530 FV CR	" " " "		1		
"	=8180.063 540 SV CR	" " " "			1	1
		(Pos.A 9-A10-E 7-F51-H16-H31-L17-L33)				

Pos.	MATR./REF./P.NO.	Qty	Descrizione/Description
1	5300.1472.019	1	- Avviatore completo Démarreur complet Compleat self-widing starter Komplette Reissstartvorrichtung Arranque completo
2	5300.2165.067	1	- Carter Carter Case Abdeckung Carter
3	5300.7770.160	1	- Rullo Rouleau Roller Walze Rodillo
4	5300.3355.008	2	- Dente d'arresto Griffe de blocage Click Sperraste Trinquete
5	5300.5801.498	1	- Molla a spirale Ressort en spirale Clock spring Spiralfeder Muelle espiral
6	5300.5590.024	1	- Molla di frizione Ressort de débrayage Thrust-spring Kupplungsfeder Muelle embrague
7	5300.5660.055	1	- Molla di richiamo Ressort de rappel Return spring Rückstellfeder Muelle antagonista
8	5300.3380.132	1	- Disco di frizione Disque d'embrayage Driving plate Kupplungsscheibe Disco embrague
9	5300.1257.080	1	- Anello reggispinta Rondelle de butée Thrust-washer Druckring Arandela soporte empuje
10	5300.1175.054	1	- Anello elastico Bague élastique Circlip Federring Anillo elástico
11	5300.1431.167	1	- Assieme funicella Groupe lanceur Rope ass.y Seilset Conjunto cables
12	5000.9200.382	6LD 260	1 - Testa completa con decompressione Culasse complete avec décompress.
"	5400.9200.383	6LD 325 6LD 360 6LD 400	1 - Cylind.head with compress.release Zylinderkopf mit Dekompression Culata con descompresor
13	5200.3348.034	1	- Decompressione completa Décompression Compression release Dekompression

6LW 500 400

9.7625.213  
9.9730.008

9.9730.240  
5300.1472.019

500.7980.048  
500.6961.070  
500.3855.061

540.2569.352

540.9880.297 \*

6370.302

je 1x 511.  
511.

Ascp mltm

