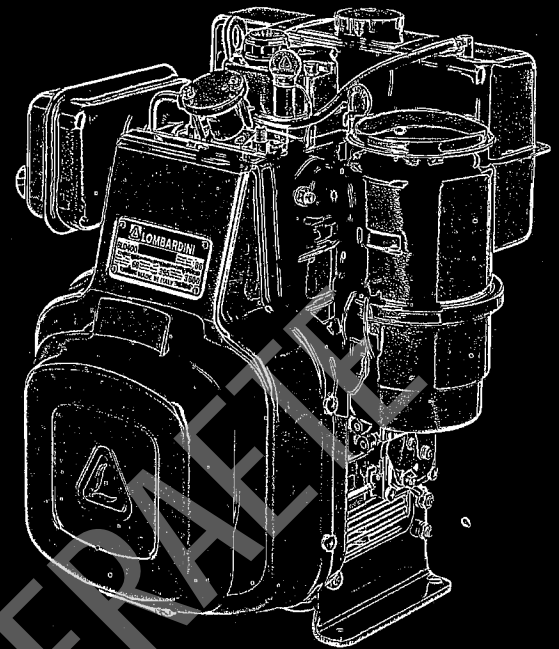


**TAVOLA RICAMBI
TABLEAU PIECES DETACHEES
SPARE PARTS TABLE
ERSAZTEILTAFEL
TABLA DE REPUESTOS
TÁBUA PEÇAS DE TROCA**

- 6LD260 - 260A/B - 260/C**
- 6LD325 - 325 K.AGR - 325/C**
- 6LD360 - 360 K.AGR - 360/V**
- 6LD400 - 400 K.AGR - 400/C - 400/V**
- 6LD435 - 435 K.AGR - 435/V**
- 6LD401/B1 - 435/B1**



LOMBARDINI
MOTORI
RICAMBI ORIGINALI

LOMBARDINI
MOTORI
PEÇAS DE TROCA ORIGINAIS

LOMBARDINI
MOTORI
PEÇAS DE TROCA ORIGINAIS

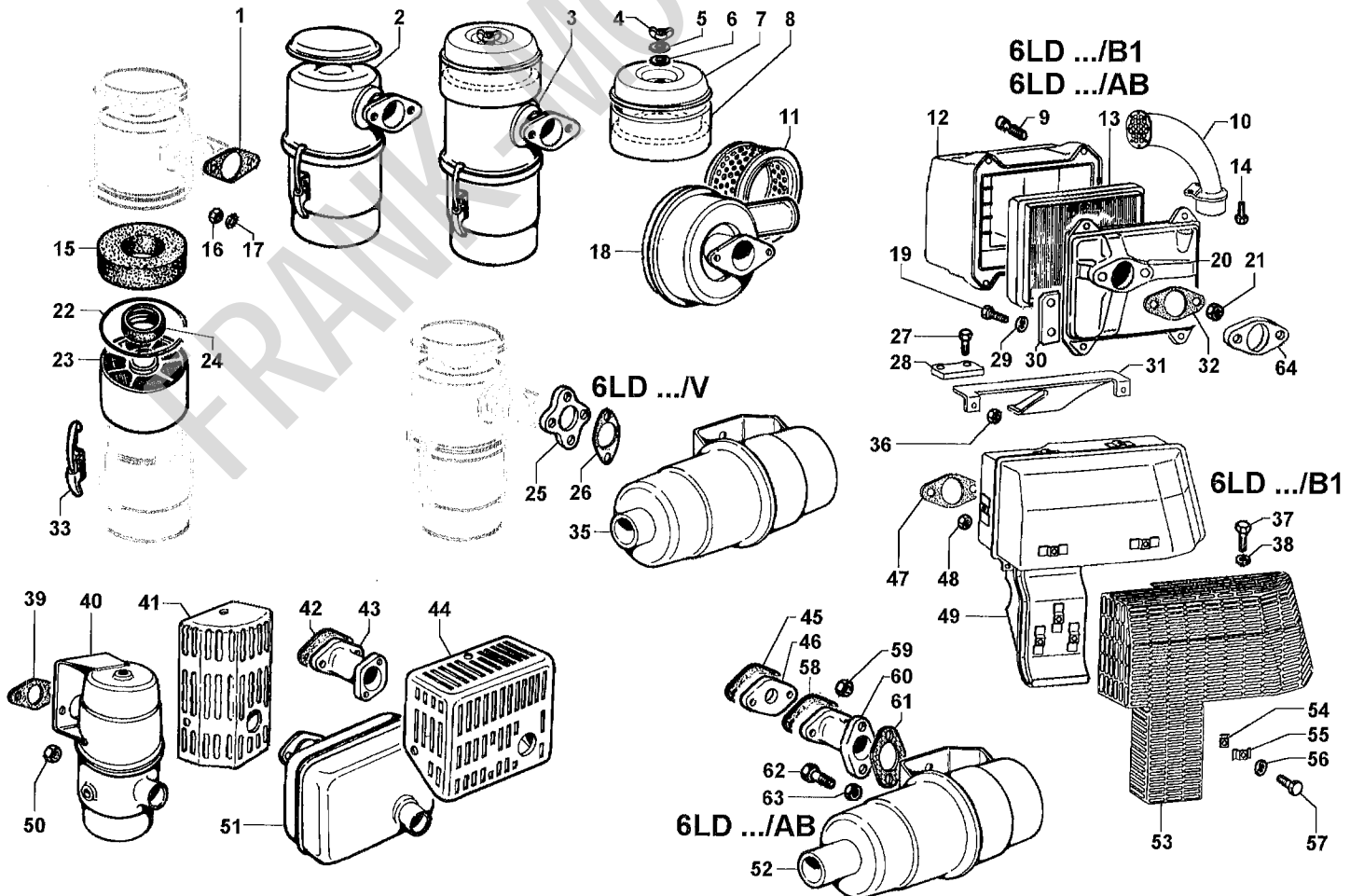
LOMBARDINI
MOTORI
PEÇAS DE TROCA ORIGINAIS

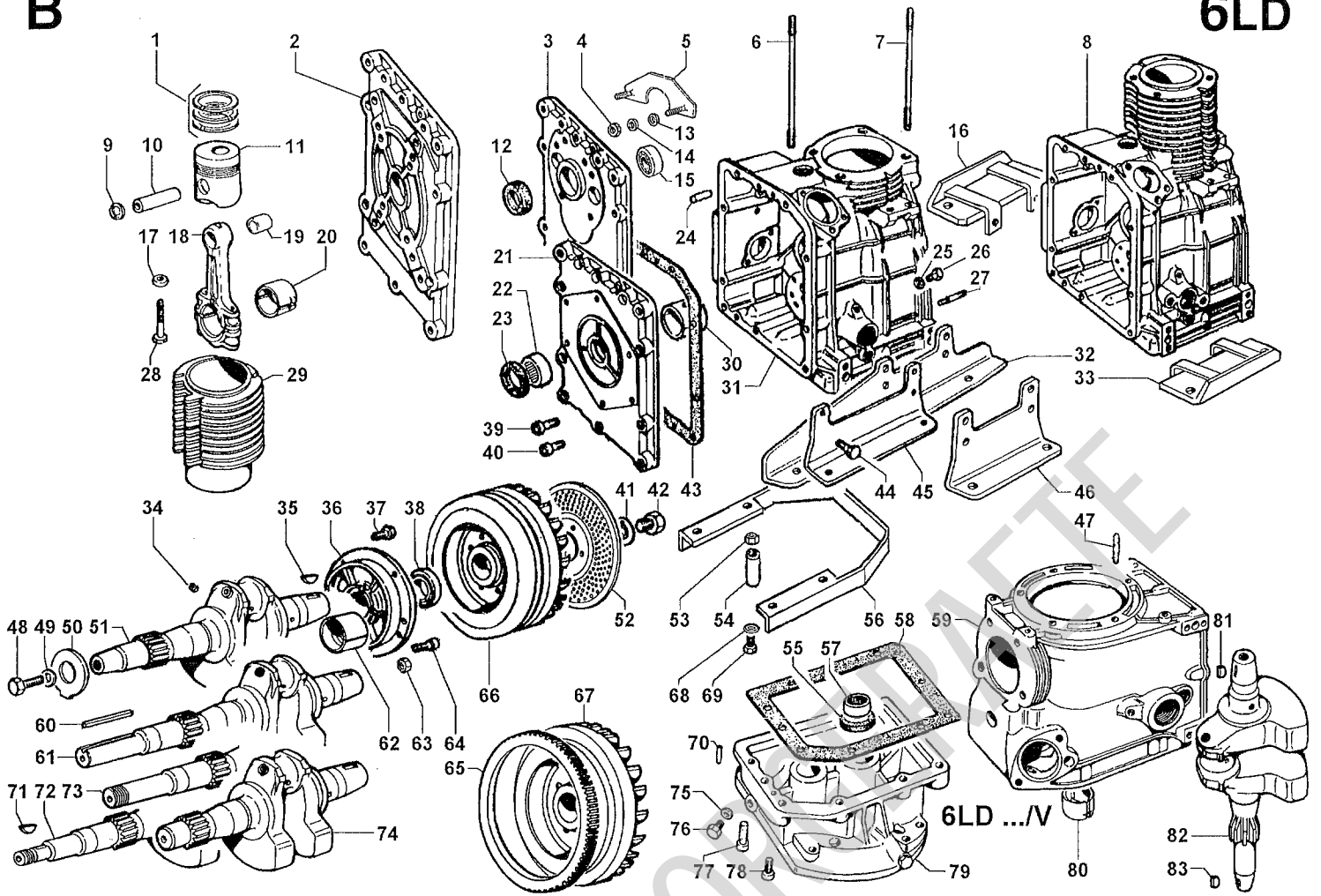
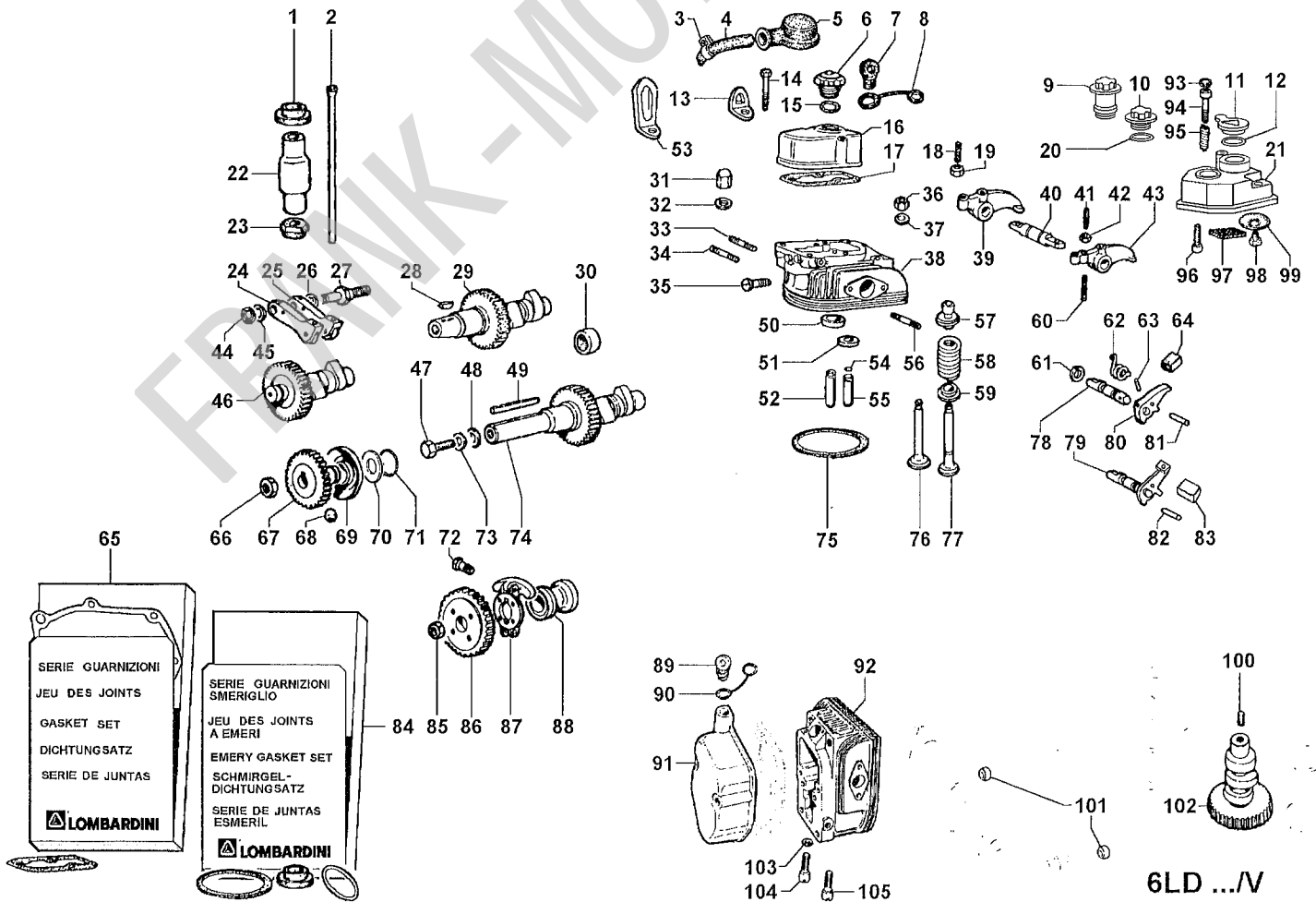
LOMBARDINI
MOTORI
PEÇAS DE TROCA ORIGINAIS

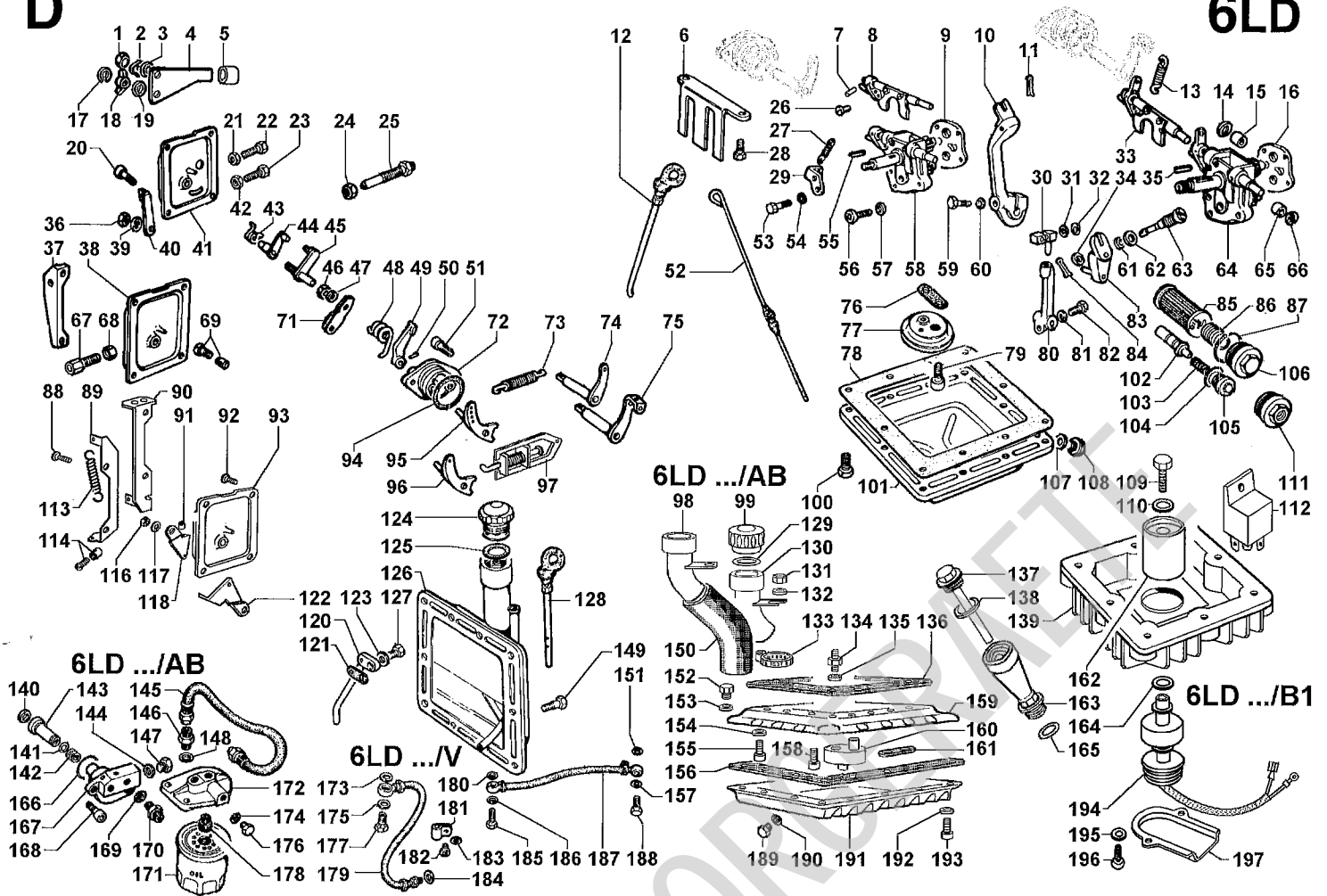
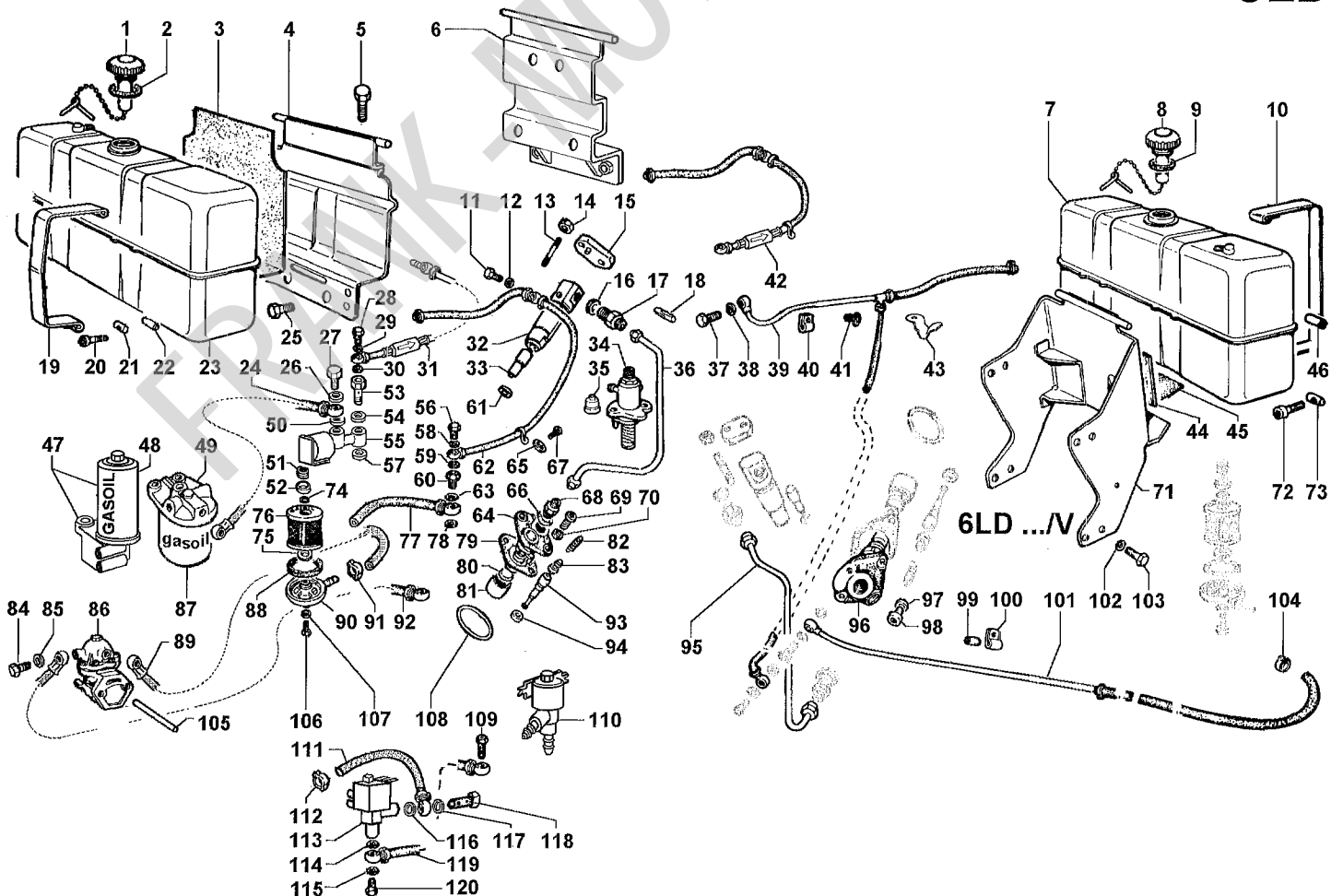
LOMBARDINI
MOTORI
PEÇAS DE TROCA ORIGINAIS

A

6LD

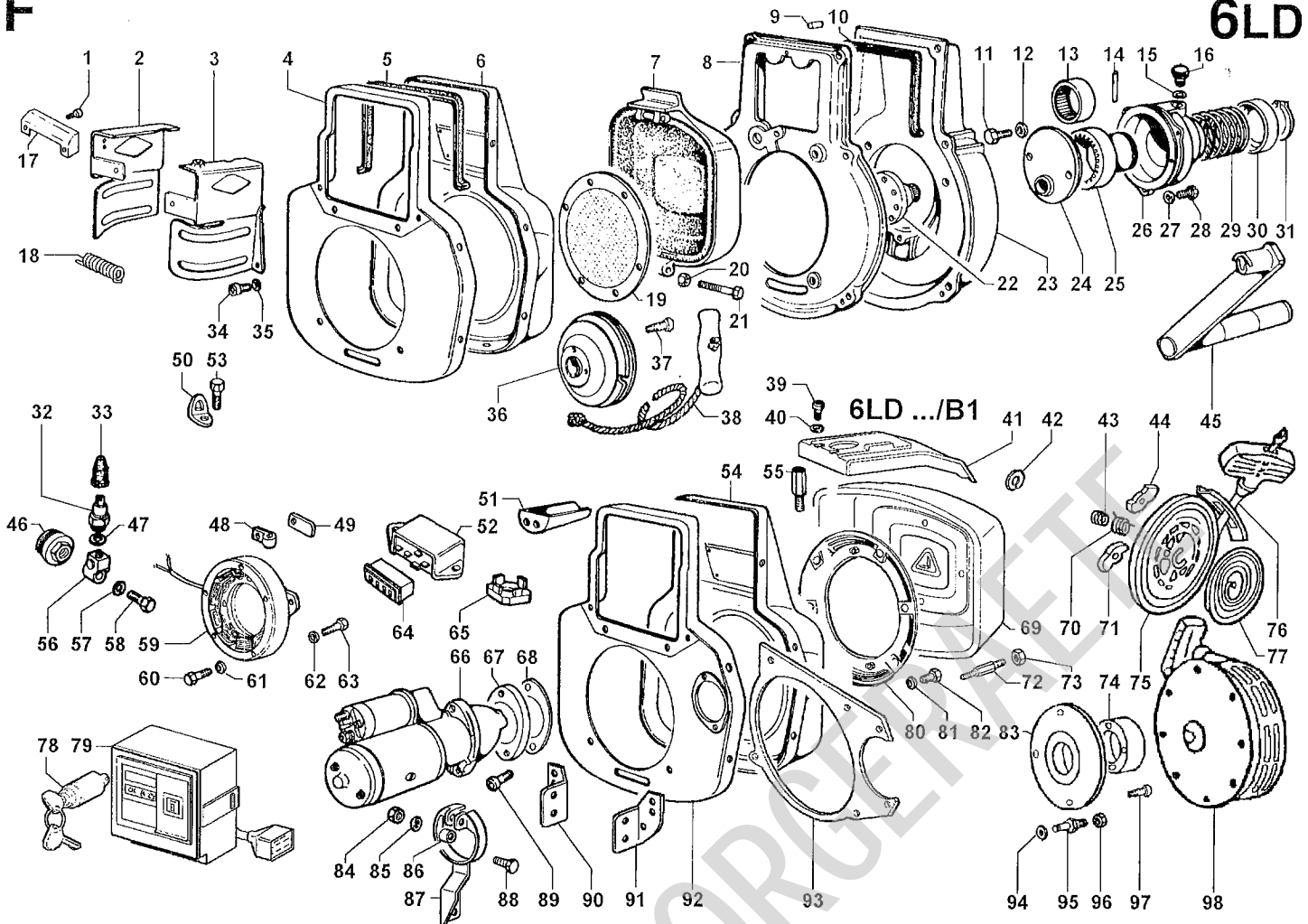


B**6LD****C****6LD**

D**6LD****E****6LD**

F

6LD

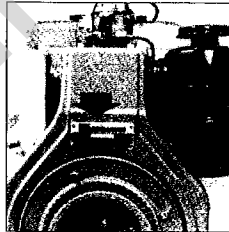


SERVICE

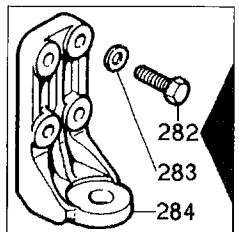
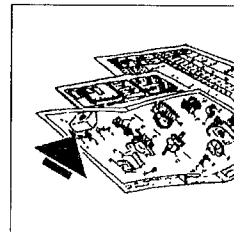
Per assistenza e ricambi rivolgersi a stazioni di servizio autorizzate Lombardini. N. tel. su libretto service e su pagine gialle.
 Pour toute exigence de service après vente et pièces détachées s'adresser aux Stations de service du réseau Lombardini. N. de téléphone indiqué sur brochure relative au service après vente et annuaire catégorique.
 For spare parts and after sale assistance contact authorized Lombardini service centers. Tel. No. appears on service booklet and telephone directory.
 Für Service und Ersatzteile bitten wir, sich an autorisierte Werkstätte zu wenden. Telef. Nummer laut unserem Service - Büchlein und Fernsprechbuch.
 Para asistencia y repuestos dirigirse a las estaciones de servicio autorizadas Lombardini. N. Tel. su libretto service y su hojas amarillas.
 Para assistência e recâmbios dirigir-se às estações de serviço autorizadas Lombardini. Número telefone é sobre a caderneta de serviço e sobre as páginas amarelas.

ORDINI RICAMBI
 COMMANDES PIÈCES
 PART ORDERS
 E-TEIL BESTELLUNGEN
 PEDIDOS DE REPUESTOS
 PEDIDOS RECÂMBIOS

TIPO MOTORE - MATRICOLA
 TYPE DE MOTEUR - MATRICULE
 ENGINE TYPE - SERIAL NUMBER
 MOTORTYP
 MOTORENNUMMER
 TIPO DEL MOTOR
 NUMERO DEL MOTOR
 TIPO DE MOTOR
 NUMERO DO MOTOR



MATRICOLA DEL RICAMBIO
 REFERENCE DE LA PIECE
 SPARE PART NUMBER
 BESTELLNUMMER DES TEILES
 REFERENCIA DEL REPUESTO
 REFERÊNCIA DO RECÂMBIO



Disegni non impegnativi - Per applicazioni speciali consultare i Centri Assistenza e Ricambi.
 Les illustrations peuvent être modifiées - Pour les adaptations consulter les Agents Service.
 Drawings are subject to modifications - Pls contact Service Centers for special applications.
 Bildänderungen vorbehalten - Für Sonderanfertigungen sich an Service Werkstätten wenden.
 Ilustraciones pueden ser modificadas - Para aplicaciones especiales contactar a las Centros Repuestos.
 Desenhos podem ser alterados - Para aplicações especiais consultar os Centros de Assistência e Peças.



FABBRICA ITALIANA MOTORI S.p.A.
 42100 REGGIO EMILIA, ITALIA - CAS. POST. 1074
 Tel. (0522) 3891 - Telegr.: LOMBARMOTOR - Telex: 530003 MOTLOM I

LOMBARDINI USA INC.
 LOMBARDINI FRANCE S.A.
 LOMBARDINI MOTOREN GMBH
 LOMBARDINI (U.K.) LTD.
 HISPANOMOTOR S.A.

2150 Boggs Road, Bldg. 300, Suite 300 - Duluth, GA 30136, USA
 Zone Ind. Nord, Rue du Nizerand, Arnas - 69400 Villefranche S/Saône, France
 Bernerstr. 54 - 60437 Frankfurt/Main - Deutschland
 Unit 5, Ferry Mills, Osney Mead - Oxford OX2 0ES, U.K.
 Zona Industrial Cova Solera, s/n° - 08191 RUBI-BARCELONA, España

ENTE COMPILATORE TECO/ATL <i>fill</i>	COD. LIBRO 1.5302.497	MODELLO N° 50763	DATA EMISSIONE 10/04/1998	REVISIONE 00	DATA 10/04/1998	VISTO <i>[Signature]</i>
--	--------------------------	---------------------	------------------------------	--------------	--------------------	-----------------------------

Antemodifica / Avant la modification / Prior to improvement
 (Vor der Änderung / Antes de la modificación

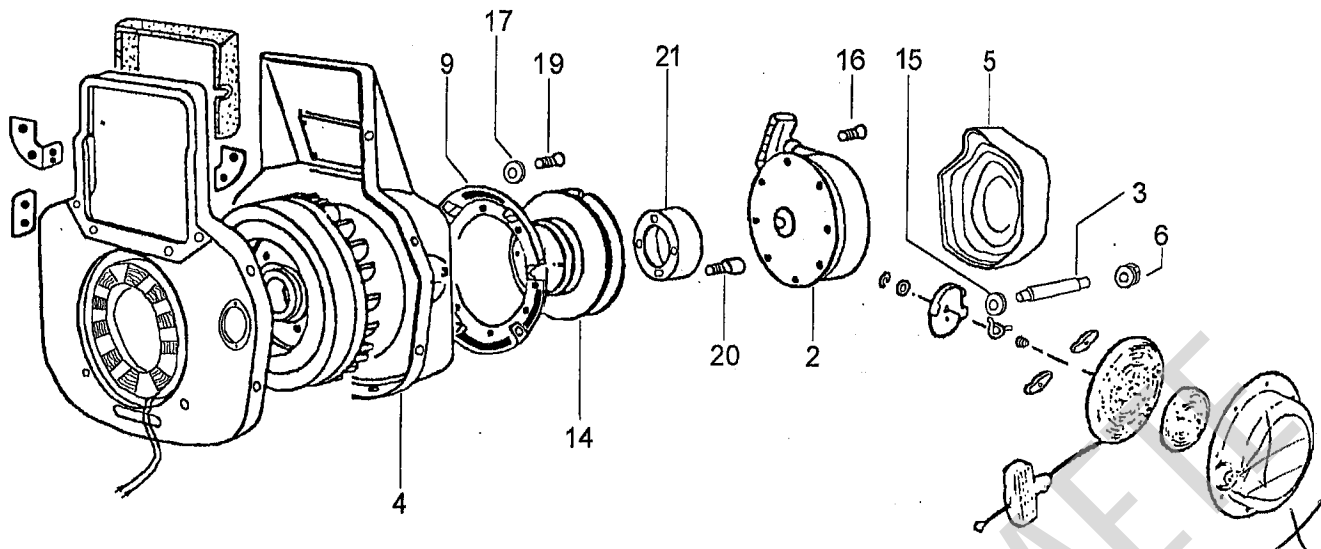


FIG. MATR./REF./P.NO

Q. ty

2	1472.019	5300 D B			1
3	2501.080	500 N B		f)	4
4	2569.351	500 N B		a)	1
"	2569.352	540 D B		b)	1
"	2569.401	540 N B		c)	1
"	2569.436	545 D B		d)	1
"	2569.491	550 N B		e)	1
5	2610.024	500 D B		f)	1
6	3203.050	9 SV C 10	M 6X1	f)	4
9	3855.061	500 S BC			1
14	6961.070	500 D B			1
15	7620.017	9 N B 10	6,2X14	f)	4
16	9730.008	9 D BC 10	M 6x10		4
17	7625.213	9 D B 10	6x12		6
19	9730.008	9 D BC 10	M 6x10		6
20	9730.240	9 N B 10	M 7x30		4
21	7980.048	500 D			1

a) per 6LD 260-325
 pour 6LD 260-325
 for 6LD 260-325
 für 6LD 260-325
 para 6LD 260-325

c) per motori con avviamento elettrico
 pour moteurs avec démarrage électrique
 for engines with electrical starting
 für Motoren mit Elektrostarter
 para motores con arranque electrico

e) per 6LD401/B1-435/B1 con avv. elettrico
 pour 6LD401/B1-435/B1 avec demarrage électrique
 for 6LD401/B1-435/B1 with electrical starting
 für 6LD401/B1-435/B1 mit Elektrostarter
 para 6LD401/B1-435/B1 con arranque electrico

f) per motori con coperchio insonorizzante
 pour moteurs avec couvercle insonorisant
 for engines with soundproofing cover
 für Motoren mit schalldämpfenden D
 para motores con tapa insonorizante

b) per 6LD 360-400-435
 pour 6LD 360-400-435
 for 6LD 360-400-435
 für 6LD 360-400-435
 para 6LD 360-400-435

d) per 6LD401/B1-435/B1
 pour 6LD401/B1-435/B1
 for 6LD401/B1-435/B1
 für 6LD401/B1-435/B1
 para 6LD401/B1-435/B1

Postmodifica / Après la modification / After improvement
 Nach der Änderung / Después de la modificación

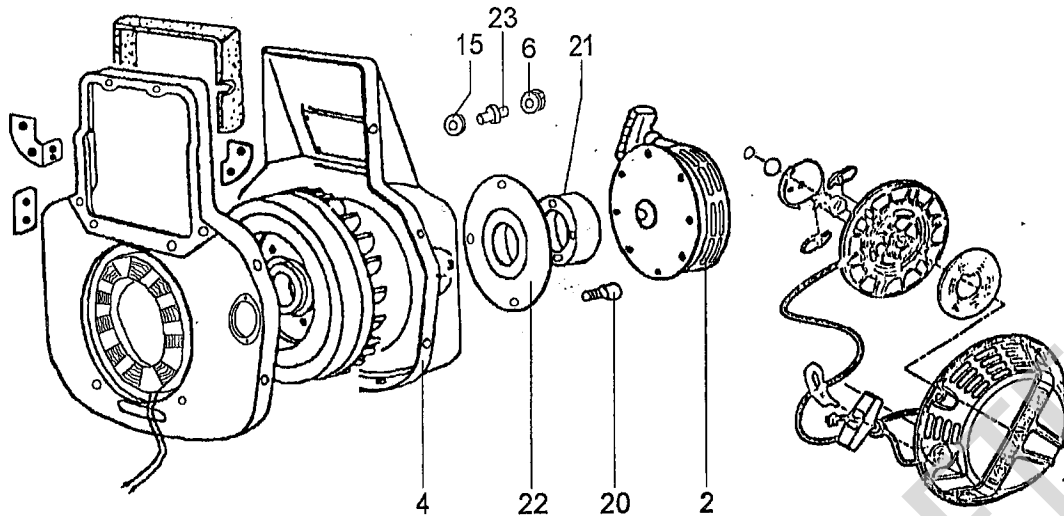


FIG. MATR./REF./P.NO

Q. ty

FIG.	MATR./REF./P.NO	Q. ty
2	1472.026 520 D A	1
4	2569.559 520 N A	a) 1
"	2569.560 530 N A	b) 1
"	2569.563 520 N A	c) 1
"	2569.534 545 N A	d) 1
"	2569.547 545 N A	e) 1
6	3203.050 9 SV C 10 M 6X1	4
15	7625.062 9 D AC 10 6,5X13	4
20	9730.315 9 N A 10 M 7x35	4
21	7980.048 500 D	1
22	3527.391 520 N A	1
23	6055.055 20 N A	4

a) per 6LD 260-325
 pour 6LD 260-325
 for 6LD 260-325
 für 6LD 260-325
 para 6LD 260-325

c) per motori con avviamento elettrico
 pour moteurs avec démarrage électrique
 for engines with electrical starting
 für Motoren mit Elektrostarter
 para motores con arranque electrico

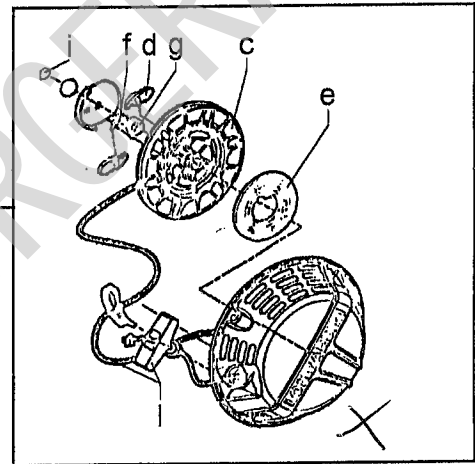
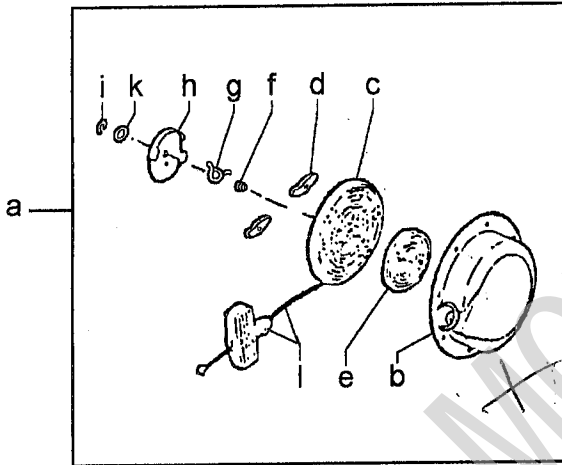
e) per 6LD401/B1-435/B1 con avv. elettrico
 pour 6LD401/B1-435/B1 avec démarrage électrique
 for 6LD401/B1-435/B1 with electrical starting
 für 6LD401/B1-435/B1 mit Elektrostarter
 para 6LD401/B1-435/B1 con arranque electrico

b) per 6LD 360-400-435
 pour 6LD 360-400-435
 for 6LD 360-400-435
 für 6LD 360-400-435
 para 6LD 360-400-435
 d) per 6LD401/B1-435/B1
 pour 6LD401/B1-435/B1
 for 6LD401/B1-435/B1
 für 6LD401/B1-435/B1
 para 6LD401/B1-435/B1

Componenti autoavvolgente antemodifica
 Composants du auto-enrouler avant la modification
 Prior to improvement rewind starter parts
 Teile für reversierstarter vor der Änderung
 Repuestos para autobobinador antes de la modificación

Componenti autoavvolgente postmodifica
 Composants du auto-enrouler apres la modification
 After improvement rewind starter parts
 Bestandteile des reversierstarters nach der Änderung
 Piezas autoarranque despues de la modificación

FIG.	MATR./REF./P.NO	Q.ty	FIG.	MATR./REF./P.NO	Q.ty
a	1472.019 5300	1	a	1472.026 520	1
b	2165.067 5300	1			
c	7770.160 5300	1	c	7100.371 196	1
d	3355.008 5300	2	d	5025.094 196	2
e	5801.498 5300	1	e	5801.539 196	1
f	5590.024 5300	1	f	5660.066 196	1
g	5660.055 5300	1	g	5590.026 196	1
h	3380.132 5300	1			
k	1257.080 5300	1			
i	1175.054 5300	1	i	1165.006 9	1
l	1431.167 5300	1	l	4904.038 196	1



Unterschiedspunten
 beider Starter.
 vgl

vedi TAVOLA RIC./see SPARE P.TABLE/voir TABLEAU P.DETACH. 1.5302.497

 Aprile/April/Avril 1998

MOTORI/ENGINES/MOTEURS Gr.6		
Colonna/Column/Colonne	1 =	6LD 325
''	2 =	6LD 325/C
''	3 =	6LD 360
''	4 =	6LD 400
''	5 =	6LD 400/C
''	6 =	6LD 435

Vedi/See/Voir

 Libretto Uso e Man./Use-Maint.booklet/Livret Emploi-Entret. 1.5302.443
 Libretto Service/Service directory/Reseau S.A.V. 1.7968.002

-
- A - valido dal motore vedi Circolare Tecnica
 from engine S.No see Service Letter
 à partir du moteur voir Circulaire Technique
 - B - valido fino al motore vedi Circolare Tecnica
 up to engine s.No. see Service Letter
 jusqu'au moteur voir Circulaire Technique
 - I - intercambiabile vedi Circolare Tecnica
 interchangeable see Service Letter
 interchangeable voir Circulaire Technique
 - E - ad esaurimento/exhausting part/piece en epuisement.
 - npd non più disponibile/no longer available/non plus dispnible
 - CT vedi circolare tecnica/see service letter/voir circulaire technique
-

 Descrizioni non impegnative/Subject to modifications/Modifications rùservües
 TECO/ATL/Assistenza Tecnica Lombardini/Aprile 1998

-
- Riquadro **A** ASPIRAZIONE/SCARICO
 Drawing **A** INTAKE/EXHAUST
 Dessin **A** ADMISSION/ECHAPPEMENT

 - Riquadro **B** BIELLA/PISTONE/ALBERO A GOMITO/VOLANO/BASAMENTO/FLANGIATURA
 Drawing **B** CONN. ROD/PISTON/CRANKSHAFT/FLYWHEEL/CRANKCASE/FLANGING
 Dessin **B** BIELLE/PISTON/VILEBREQUIN/VOLANT/CARTER/BRIDE

 - Riquadro **C** TESTA/CAPPELLO BIL./VALVOLE/DISTRIBUZIONE/REG.GIRI
 Drawing **C** CYLINDER HEAD/ROCKER BOX/VALVES/TIMING/SPEED GOVERNOR
 Dessin **C** CULASSE/COUVERCLE CUL./SOUPAPES/DISTRIBUTION/REG.VITESSE

 - Riquadro **D** COMANDI/CIRCUITO LUBRIFICAZIONE
 Drawing **D** CONTROLS/LUBRICATING SYSTEM
 Dessin **D** COMMANDES/CIRCUIT DE LUBIFICATION

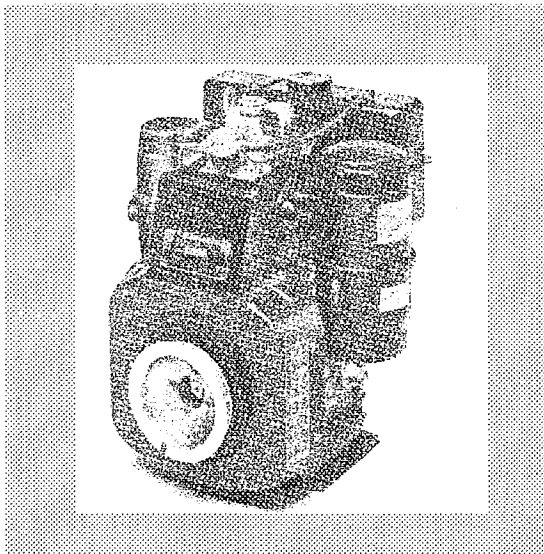
 - Riquadro **E** CIRCUITO COMBUSTIBILE
 Drawing **E** FUEL SYSTEM
 Dessin **E** CIRCUIT CARBURANT

 - Riquadro **F** RAFFREDDAMENTO/AVVIAMENTO
 Drawing **F** COOLING SYSTEM/STARTING
 Dessin **F** CIRCUIT DE REFROIDISSEMENT/DEMARRAGE
-

 Tipo motore
 Engine type
 Type moteur

 Blocco motore
 Short block
 Bloc moteur

6LD 325	1560.192 5200
6LD 325/C	---
6LD 360	1560.177 5300
6LD 400	1560.141 5400
6LD 400/C conico conical PTO	1560.149 5430
6LD 400/C cilind cylindrical PTO	1560.150 5430
6LD 435	1560.232 5500



1560.192 5200

1560.177 5300
1560.141 5400
1560.149 5430
1560.150 5430
1560.232 5500



6LD 325 - 325/C - 360 - 400 - 400/C - 435 Industrial - K.AGR
vedi Tavola Ric./see Parts Table 1.5302.497

						6LD 325	6LD 325/C	6LD 360	6LD 400	6LD 400/C	6LD 435
B 1+	8211.078	520			serie segmenti/ring set std.	1	1				
	8211.079	520			" " " " +0,50	1	1				
	8211.080	520			" " " " +1,00	1	1				
	8211.045	530			" " " " std.			1			
	8211.046	530			" " " " +0,50			1			
	8211.047	530			" " " " +1,00			1			
	ex 8211.011	283	B	->	dal/from 24.03.1986->CT 982->				v	v	
	-> 8211.056	540	I		serie segmenti/ring set std.				1	1	1
	8211.017	540			" " " " +0,50				1	1	1
	8211.018	540			" " " " +1,00				1	1	1
B 2	=6645.214	500			PORTINA/COVER CASE A&B SAEJ609A	1		1	1		1
	=6645.216	500			con giochi assiali ridotti with reduced radial clearance (Pos. 2-22-23)	1		1	1		1
B 3	ex 6646.076	-	-	-	sostituito da/superseded by ->		v			v	
	->=6645.213	503	I		PORTINA DISTRIBUZ./GEAR COVER (Pos. 3-12-22)		1			1	
B 4	3240.018	9			dado/nut		2			2	
B 5	6275.069	503			piastra		1			1	
B 6+	6850.108	540			prigion.l.distr./gear side stud	2	2	2	2	2	
	6850.182	550			" " " "						2
B 7+	6850.106	540			prigion.l.vol./flywh. side stud	2	2	2	2	2	
	6850.181	550			" " " "						2
B 9+	1240.017	9			anello seeger/snap ring	2	2	2	2	2	
	ex 1240.017	9	B	->	da/from s.No.3889227/CT 60044->						v
	-> 1241.002	9	A		anello seeger/snap ring						2
B 10+	ex 8480.023	-	-	(npd)	-> da/from s.No.3129523/CT 60019->			v			
					-> da/from s.No.3150935/CT 60020->	v	v				
	ex 8480.075	-	-	-	sostituito da/superseded by ->	v	v	v			
	-> 8480.092	530	I		spinotto/gudgeon pin	1	1	1			
	ex 8480.030	-	-	(npd)	-> da/from s.No.3114603/CT 60008->				v	v	
	-> 8480.060	540	I		spinotto/gudgeon pin diam.20				1	1	
	ex 8480.060	540	B	->	da/from s.No.3889227/CT 60044->						v
	-> 8480.095	550	A		spinotto/gudgeon pin diam.22						1

Motore/Engine	6LD 325	Industrial - K.AGR
"	6LD 325/C	Industrial
"	6LD 360	Industrial - K.AGR
"	6LD 400	Industrial - K.AGR
"	6LD 400/C	Industrial
"	6LD 435	Industrial - K.AGR



6LD 325 - 325/C - 360 - 400 - 400/C - 435 Industrial - K.AGR
vedi Tavola Ric./see Parts Table 1.5302.497

				6LD 325	6LD 325/C	6LD 360	6LD 400	6LD 400/C	6LD 435
B 22+	3030.028	9	cuscinetto/ball bearing DL 2820	1		1	1		1
	3030.046	9	cuscinetto NK 20 per portina con giochi assiali ridotti ball bearing for cover case with reduced radial clearance	1		1	1		1
B 23+	1213.056	9	anello tenuta/seal ring	1		1	1		1
B 24+	8460.055	276	spina/taper pin	2	2	2	2	2	2
B 25	ex 4670.062	9	B -> da/from s.No.2767156/CT 989->	v	v	v	v	v	
	-> 4670.058	9	A guarnizione/copper gasket	1	1	1	1	1	1
B 26	ex 1760.001	9	B -> da/from s.No.2835223/CT 998->	v	v	v	v	v	
	-> 1770.001	9	A bullone/bolt M 8 X 1,25 X 12	1	1	1	1	1	1
B 27+	6780.076	9	prigioniero/stud M 8 X 18 (34)	5	5	5	5	5	5
B 28+	1770.083	9	bullone/bolt M 8 X 1,25 X 50	2	2	2	2	2	2
B 29	ex 2380.177	520	B -> da/from s.No.3150935/CT 60020->	v	v				
	ex 2380.299	-	- - - - - sostituito da/superseded by ->	v	v				
	ex 2380.449	520	B -> da/from s.No.4044434/CT 60046->	v	v				
	-> 2380.583	520	A cilindro/cylinder	1	1				
	ex 2380.172	530	B -> da/from s.No.3129523/CT 60019->			v			
	ex 2380.275	-	- - - - - sostituito da/superseded by ->			v			
	-> 2380.453	530	A cilindro/cylinder			1			
	ex 2380.132	540	B -> da/from s.No.3114603/CT 60008->				v	v	
	ex 2380.298	-	- - - - - sostituito da/superseded by ->				v	v	
	-> 2380.457	540	A cilindro/cylinder				1	1	
	2380.461	550	cilindro/cylinder						1
B 30	1611.018	530	I br.l.distr./gear s.bear. std.	1	1	1	1	1	1
	1611.019	530	I br.l.distr./gear s.bear.-0,50	1	1	1	1	1	1
	1611.020	530	I br.l.distr./gear s.bear.-1,00	1	1	1	1	1	1
B 31	ex 1510.216	520	B -> da/from s.No.4044434/CT 60046->	v	v				
	->=1510.171	540	A BASAMENTO/CRANKCASE	1	1	1	1	1	
	=1510.531	550	BASAMENTO/CRANKCASE (Pos. 6-7-24-27-31)						1
B 32	6428.036	500	piede l.scarico/exh.side mount	1		1	1		
	6428.037	500	piede l.aspiraz/inl.side mount	1		1	1		
B 34+	9000.069	500	tappo/expansion plug	2	2	2	2	2	2
B 35+	2280.048	9	chiavetta l.vol./flywh.side key	1	1	1	1	1	1
B 36	ex 8675.082	- (npd)	-> da/from s.No.2853350/CT 9104->	v	v	v	v	v	
	-> 8675.135	500	A supp.alb.gomito std e alt.4 A crnkshft supp.std and 4 A alter	1	1	1	1	1	1
	ex 8675.150	500	B -> da/from s.No.3063082/CT 60007->	v		v	v		v
	8675.193	540	A supp.alb.gomito per alt.12-16 A crnkshft supp. (12-16 A altern)	1		1	1		1
B 37	1760.001	9	bullone/bolt M 6 X 1 X 10	4	4	4	4	4	4
B 38	1210.092	9	anello tenuta/seal ring	1		1	1		1
	1213.001	9			1			1	
B 39	9732.063	9	A vite/screw M 8 X 1,25 X 35	9	9	9	9	9	9
B 40	9732.064	9	vite/screw M 8 X 1,25 X 30	1	1	1	1	1	1
B 41	7626.043	9	S IC 10 rondella/washer	1	1	1	1	1	1
B 42	1800.030	9	F IC 10 bullone/bolt	1		1	1		1
	1800.029	9	D C 10 bullone/bolt		1			1	
B 43	4601.020	500	guarnizione/gasket 0,25	1	1	1	1	1	1
B 44	1770.111	9	bullone/bolt M 8	8	8	8	8	8	8
B 45	6427.035	500	piede/engine mount	2	2	2			
B 46	6428.065	5000	piede/engine mount				2	2	2
B 48	1770.039	9	bullone/bolt M 8 X 1,25 X 28	1	1	1	1	1	1
B 49	7625.060	9	rondella/washer	1	1	1	1	1	1
B 50	1257.008	500	anello reggispinta/thrustwasher	1	1	1	1	1	1

Motore/Engine	6LD 325	Industrial - K.AGR
"	6LD 325/C	Industrial
"	6LD 360	Industrial - K.AGR
"	6LD 400	Industrial - K.AGR
"	6LD 400/C	Industrial
"	6LD 435	Industrial - K.AGR



6LD 325 - 325/C - 360 - 400 - 400/C - 435 Industrial - K.AGR
vedi Tavola Ric./see Parts Table 1.5302.497

				6LD 325	6LD 325/C	6LD 360	6LD 400	6LD 400/C	6LD 435
B 73	=1050.120	500	ALB.G./CRNKSHFT Ext 8 A mm 352 (filetto/thread 3/4''x mm 15,7)	1					
'	=1050.121	500	ALB.G./CRNKSHFT Ext 9 mm 365,5	1		1	1		
'	=1050.851	550	(filetto/thread 1''x mm 16)						1
'	=1050.127	500	ALB.G./CRNKSHFT Ext 9 mm 366,2 (filetto/thread 1''x mm 26,2)			1			
'	=1050.129	500	ALBERO GOMITO/CRANKSHAFT mm 339 (filetto/thread 3/4''x mm 23,7) (Pos. 34-35-73)	1					
B 74	=1050.116	503	ALBERO GOMITO/CRANKSHAFT centratura/center A 3		1			1	
'	=1050.146	503	ALBERO GOMITO/CRANKSHAFT centratura/center r = 3,15 (Pos. 34-35-74)		1			1	
C 1	4740.018	500	guarnizione/upper gasket	1	1	1	1	1	1
C 2	1410.016	500	asta punteria/push rod	2	2	2	2	2	
'	1410.105	550							2
C 3	3617.020	2760	fascetta/strip fixing	1	1	1	1	1	1
C 4	9601.044	5000	tubo sf./breather pipe(mm 500)	1	1	1	1	1	1
C 5	2145.003	2830	cappuccio/cap	1	1	1	1	1	1
C 6	ex 9050.021	- - - - -	sostituito da/superseded by ->	v	v	v	v	v	v
	->=9050.050	530	I TAPPO SFIATO/BREATHER CAP (Pos. 6-15)	1	1	1	1	1	1
C 7	ex 9055.003	270	B -> fino/until 10.1989->CT 60003	v	v	v	v	v	v
C 8	ex 3695.038	500	B -> fino/until 10.1989->CT 60003	v	v	v	v	v	v
C 9	9032.054	550	tappo rif.olio/oil filler cap	1		1	1		1
C 10	9032.034	540	tappo rif.olio/oil filler cap	1		1	1		1
C 11	2750.231	540	coperchio sfiato/breather cap	1		1	1		1
C 12	1201.095	9	anello OR 3162/O ring	1		1	1		1
C 13	8506.003	904	A squadretta/angle bracket	1	1	1	1	1	1
C 14	9730.034	9	vite/screw M 8 X 1,25 X 55	2	2	2	2	2	2
C 15+	1200.014	9	anello OR/rubber oil seal	1	1	1	1	1	1
C 16	ex 2125.103	- - (npd)	-> dal/from 09.10.1989->CT 60003->	v	v	v	v	v	v
	ex 2125.141	- - - - -	sostituito da/superseded by ->	v	v	v	v	v	v
	-> 2125.133	500	I cappello bilanc./rocker box cap	1	1	1	1	1	1
C 17	4400.023	540	guarnizione/gasket 0,50	1	1	1	1	1	1
C 18+	9850.048	500	vite/screw	1	1	1	1	1	1
C 19+	3240.008	9	dado/nut	1	1	1	1	1	1
C 20	1200.014	9	I anello OR/rubber oil seal	1		1	1		1
C 21	2125.144	540	cappello con ricircolo sf.int. rock.cover with intern.rec.brea	1		1	1		1
C 22	ex 9520.046	- - (npd)	-> da/from s.No.3114603/CT 60008-> -> da/from s.No.3129523/CT 60019-> -> da/from s.No.3150935/CT 60020->	v	v		v	v	
	-> 9520.029	500	I tubo protez./guard tube	1	1	1	1	1	
	9520.069	550	tubo protez./guard tube			v			1
C 23	4740.025	500	guarnizione/lower gasket	1	1	1	1	1	1
C 24	ex 5270.085	- - - - -	sostituito da/superseded by ->	v	v	v	v	v	v
	-> 5271.054	500	I leva alb.camme/camshaft lever	1	1	1	1	1	1
C 25	ex 5270.084	- - - - -	sostituito da/superseded by ->	v	v	v	v	v	v
	-> 5271.054	500	I leva alb.camme/camshaft lever	1	1	1	1	1	1
Motore/Engine	6LD 325	Industrial - K.AGR							
'	6LD 325/C	Industrial							
'	6LD 360	Industrial - K.AGR							
'	6LD 400	Industrial - K.AGR							
'	6LD 400/C	Industrial							
'	6LD 435	Industrial - K.AGR							



6LD 325 - 325/C - 360 - 400 - 400/C - 435 Industrial - K.AGR
vedi Tavola Ric./see Parts Table 1.5302.497

					6LD 325	6LD 325/C	6LD 360	6LD 400	6LD 400/C	6LD 435
C 65	=8180.092	520	SERIE GUARNIZIONI/GASKET SET		1	1				
	=8180.082	530					1			
	=8180.063	540						1	1	1
			(Pos.A32-A47-B43-C17-C75-D76-D78-E79)							
C 66	3203.060	9	dado/nut		1	1	1	1	1	1
C 67	ex 7362.126	- - (npd)	-> da/from s.No.2835223/CT 998->		v	v	v	v	v	
	->=7362.109	500 A	REGOLATORE GIRI motore industr. Industr.engine GOVERNOR SPEED (Pos. 67-68-69-71)		1	1	1	1	1	1
	ex 7362.109		-> da/from s.No.2846112/CT 9103->							
	->=7362.193	500 A	REGOLATORE GIRI motore K.AGR K.AGR engine GOVERNOR SPEED (Pos. 67-68-69-70-71)		1		1			1
C 67+	ex 4936.047	- - (npd)	-> da/from s.No.2835223/CT 998->		v	v	v	v	v	
	-> 4936.020	500 A	ingranaggio/gearwhell		1	1	1	1	1	1
C 68+	ex 8245.010	9 B	-> da/from s.No.2835223/CT 998->		v	v	v	v	v	
	-> 8245.009	9 A	sfera/gov.ball (7/16"- mm 11,1)		6	6	6	6	6	6
C 69+	ex 2086.081	- - (npd)	-> da/from s.No.2935223/CT 998->		v	v	v	v	v	
	-> 2085.072	500 A	campana/governor bell		1	1	1	1	1	1
	ex 2085.072	500 B	-> da/from s.No.2846112/CT 9103->		v		v	v		v
	ex 2086.100	- - - - -	sostituito da/superseded by ->		v		v	v		v
	-> 2085.072	500 I	campana/governor bell (K.AGR)		1		1	1		1
C 70+	ex		-> da/from s.No.2846112/CT 9103->							
	-> 7701.081	500 A	rondella/thrust washer		1		1	1		1
C 71+	1160.011	500	anello/circlip		1	1	1	1	1	1
C 72+	8400.073	9	spina/taper pin		2		2	2		2
C 73	7565.007	9	rondella/washer			1			1	
C 74	ex 1011.078	- - (npd)	-> da/from s.No.2602257/CT 970->			v			v	
	-> 1011.049	503 A	albero camme/camshaft			1			1	
C 75	4730.206	520	guarn.testa/head gasket	0,55	1	1				
	4730.159	520		0,60	1	1				
	4730.207	520		0,65	1	1				
	4730.160	520		0,70	1	1				
	4730.208	520		0,75	1	1				
	4730.161	520		0,80	1	1				
	4730.209	520		0,85	1	1				
	4730.162	520		0,90	1	1				
	4730.210	520		0,95	1	1				
	4730.163	520		1,00	1	1				
	4730.171	530		0,50			1			
	4730.180	530		0,55			1			
	4730.145	530		0,60			1			
	4730.181	530		0,65			1			
	4730.146	530		0,70			1			
	4730.182	530		0,75			1			
	4730.147	530		0,80			1			
	4730.183	530		0,85			1			
	4730.148	530		0,90			1			
	4730.184	530		0,95			1			

segue/continues

Motore/Engine	6LD 325	Industrial - K.AGR
	6LD 325/C	Industrial
	6LD 360	Industrial - K.AGR
	6LD 400	Industrial - K.AGR
	6LD 400/C	Industrial
	6LD 435	Industrial - K.AGR



6LD 325 - 325/C - 360 - 400 - 400/C - 435 Industrial - K.AGR
vedi Tavola Ric./see Parts Table 1.5302.497

						6LD 325	6LD 325/C	6LD 360	6LD 400	6LD 400/C	6LD 435
D 1+	3240.004	9			dado/nut	1	1	1	1	1	1
D 2+	6330.057	90			piastrina/safety plate	1	1	1	1	1	1
D 3+	7625.019	9			rondella/washer	1	1	1	1	1	1
D 4+	5201.094	500			leva/lever	1	1	1	1	1	1
D 5+	6550.010	270			pomello/knob	1	1	1	1	1	1
D 6	ex 5095.099	500	B	->	dal/from 09.10.1989->CT 60003	v	v	v	v	v	
D 7	8430.023	9			spina/locating pin	1	1	1	1	1	1
D 8	ex 6140.135	540	B	->	da/from s.No.2835223/CT 998->	v	v	v	v	v	
	-> 6141.046	500	A		perno leva/oil pump pin lever	1	1	1	1	1	1
	ex 6141.046	500	B	->	da/from s.No.2846112/CT 9102->	v		v	v		v
	ex 6140.351	-	(npd)	->	da/from s.No.3475907/CT 60034->	v		v	v		v
	-> 6141.046	500	A		per motori/for engines K.AGR	1		1	1		1
D 9+				vedi/see Pos. D 58						
D 10	=5200.176	540			LEVA COM./INJECT.PUMP LEVER (Pos. 10-11-59-60)	1	1	1	1	1	1
	ex 5200.363	-	(npd)	->	da/from s.No 3475907/CT 60034->	v		v	v		v
	->=5200.176	540	A		per motori/for engines K.AGR (Pos. 10-11-59-60)	1		1	1		1
D 11+	2800.049	710			copiglia/cotter pin	1	1	1	1	1	1
D 12	1400.193	550			asta livello/dipstick (mm 200)				1		1
D 13	5801.087	540			molla/spring	1		1	1		1
D 14	1240.077	9			anello seeger/circlip	1		1	1		1
D 15				vedi/see Pos. D 64						
D 16				vedi/see Pos. D 64						
D 17+	1165.001	9			anello/circlip	1	1	1	1	1	1
D 18+	3200.015	9	I		dado/nut	1	1	1	1	1	1
D 19+	7626.054	9	A		rondella/washer	2	2	2	2	2	2
D 20	9790.039	9			vite/screw M 6 X 1 X 12	4	4	4	4	4	4
D 21	3240.008	9			dado/nut	1	1	1	1	1	1
D 22	1760.029	9			bullone/bolt M 6 X 1 X 30	1	1	1	1	1	1
D 23	1760.029	9			bullone/bolt M 6 X 1 X 30	1	1	1	1	1	1
D 24+	3240.058	9			dado/nut	1	1	1	1	1	1
D 25	ex 8576.016	540	B	->	da/from s.No.2835223/CT 998->	v	v	v	v	v	
	->=8576.025	500	A		SUPPLEMENTO/EXTRA FUEL DEVICE	1	1	1	1	1	1
	=8576.016	540			per gr.elettrogeni/for gen.sets	1		1	1		1
	=8576.045	520			per vetturetta/for microcar	1					
	=8576.055	520			per vettur./microcar L.France (Pos. 24-25)	1					
D 26	9810.002	9			vite/screw	2	2	2	2	2	2
D 27+	ex 5801.087	540	B	->	da/from s.No.2835223/CT 998->	v	v	v	v	v	
	-> 5801.198	540	A		molla regolatore/govern.spring	1	1	1	1	1	1
	5801.462	520			per vetturette/for microcar	1					
D 28	ex 9790.037	9	B	->	dal/from 09.10.1989->CT 60003	v	v	v	v	v	
D 29+	ex			->	da/from s.No.2835223/CT 998->	v	v	v	v	v	
	-> 6371.045	500	A		piastra/plate	1	1	1	1	1	1
D 33	6140.136	5400			perno leva pompa/oil pump pin	1		1	1		1
D 35+	2280.061	9			chiavetta/key	1		1	1		1
D 36+	3240.008	9			dado/nut	1	1	1	1	1	1
D 37	=2516.013	500			COMANDO/CONTROL ASS.Y (Pos. 37-67-68)	1		1	1		1
D 38	=2515.087	500			COMANDO A DIST./REMOTE CONTROL (motore ind./industrial.engine) (Pos. 36-37-38-39-40-43-44-67-68-69)	1	1	1	1	1	1

Motore/Engine	6LD 325	Industrial - K.AGR
"	6LD 325/C	Industrial
"	6LD 360	Industrial - K.AGR
"	6LD 400	Industrial - K.AGR
"	6LD 400/C	Industrial
"	6LD 435	Industrial - K.AGR



6LD 325 - 325/C - 360 - 400 - 400/C - 435 Industrial - K.AGR
vedi Tavola Ric./see Parts Table 1.5302.497

					6LD 325	6LD 325/C	6LD 360	6LD 400	6LD 400/C	6LD 435
D 72	ex 8785.076	540	B	-> da/from s.No.2835223/CT 998->	v	v	v	v	v	
	->=8785.075	500	A	SUPPORTO LEVE/LEVER SUPPORT (Pos. 46-47-48-49-50-71-72-74-94-95)	1	1	1	1	1	1
	=8785.076	540		SUPPORTO LEVE per gruppi elettr LEVER SUPPORT for generat.sets (Pos. 46-47-48-49-50-71-72-75-94-95)	1		1	1		1
	=8785.129	520		SUPPORTO LEVE per vetturette LEVER SUPPORT for microcar (Pos. 46-47-48-49-50-71-72-74-94-96-97)	1					
D 73	ex 5655.081	540	B	-> da/from s.No.2835223/CT 998->	v	v	v	v	v	
	-> 5655.038	500	A	molla regol./govern.spring std	1	1	1	1	1	1
	5655.081	540		molla per gruppi elettrogeni govern.spring for generat.sets	1		1	1		1
D 74+			vedi/see Pos. D 72						
D 75+			vedi/see Pos. D 72						
D 76	4776.016	500		guarnizione/gasket	1	1	1	1	1	1
D 77	1745.001	500		bulbo/oil pipe	1	1	1	1		
	1745.002	5000							1	1
D 78	4601.003	500		guarnizione/gasket						1
D 79	9732.047	9		vite/screw M 12 X 1,5 X 20	1	1	1	1	1	1
D 85	2175.019	500		cartuccia olio/oil element	1	1	1	1	1	1
D 86	5725.032	500		molla/spring	1	1	1	1	1	1
D 87	1200.016	9		anello OR/rubber oil seal	1	1	1	1	1	1
D 88	9790.047	9		vite/screw M 6 X 1 X 16	2		2	2		2
D 89	ex 8903.043	5000	B	-> dal/from 10.01.1990/CT 60017->	v		v	v		v
	-> 8900.338	5000	A	supporto/support	1		1	1		1
D 90	8900.395	500		supporto/support			1	1		1
D 91	1970.265	5000	A	bussola/sleeve	1		1	1		1
D 92	9790.039	9		vite/screw M 6 X 1 X 12	2		2	2		2
D 93	ex=2691.082	5000	B	-> dal/from 10.01.1990/CT 60017->	v		v	v		v
	->=2690.301	5000	A	CONTROLLO A DISTANZA mot.K.AGR REMOTE CONTROL - K.AGR engine (Pos. 44-93-116-117-118)	1		1	1		1
	=2690.320	000		CONTROLLO A DISTANZA mot.K.AGR REMOTE CONTROL - K.AGR engine stop ENPI (Pos. 44-93-116-117-122)			1	1		1
D 94+	1200.087	9		anello OR/rubber oil seal	1	1	1	1	1	1
D 95+			vedi/see Pos. D 72						
D 96+			vedi/see Pos. D 72						
D 97+			vedi/see Pos. D 72						
D100	1770.111	9		bullone/bolt M 8	10	10	10	10	10	
	9730.100	9		vite/screw M 8 X 1,25 X 25						10
D101	=6647.045	500		PORTINA DI FONDO/OIL PAN	1	1	1			
	=6647.046	5000						1	1	
	=6645.296	550								1
				(Pos. 101-107-108)						
D102	9680.013	560		valvola press./press.oil valve	1	1	1	1	1	1
D103	5755.049	500		molla/spring	1	1	1	1	1	1
D104	4670.088	9		guarniz./copper gasket 18X24X1	1	1	1	1	1	1
D105	9070.012	500		tappo valvola/valve cap	1	1	1	1	1	1
D106	9060.008	500		tappo filtro/filter cap	1	1	1	1	1	1

Motore/Engine	6LD 325	Industrial - K.AGR
"	6LD 325/C	Industrial
"	6LD 360	Industrial - K.AGR
"	6LD 400	Industrial - K.AGR
"	6LD 400/C	Industrial
"	6LD 435	Industrial - K.AGR



6LD 325 - 325/C - 360 - 400 - 400/C - 435 Industrial - K.AGR
vedi Tavola Ric./see Parts Table 1.5302.497

				6LD 325	6LD 325/C	6LD 360	6LD 400	6LD 400/C	6LD 435
E 33+	6531.104	395	polverizzatore/nozzle	1	1				
	ex 6531.102	- - (npd)	-> dal/from 20.09.1985->CT 974->				v	v	
	ex 6531.104	395	B -> da/from s.No.3739805/CT 60041->			v	v	v	v
	-> 6531.433	530	A polverizzatore/nozzle Stanadyne			1	1	1	1
	ex 6531.445	- - - - -	sostituito da/superseded by ->			v	v	v	v
	-> 6531.433	530	A polverizzatore/nozzle Stanadyne			1	1	1	1
E 34	6590.134	520	pompa iniez.QLC/injection pump	1					
E 35	9672.033	520	valvola mand.QLC mmc 15/d.valve	1					
E 36	9372.090	500	tubo alta press./high pr.pipe	1	1	1	1	1	1
E 47	3730.058	515	filtro combust./fuel filter	1					
E 48	2175.066	515	cartuccia comb./fuel cartridge	1					
E 49	3730.036	283	filtro combust./fuel filter	1		1	1		1
E 50	4670.060	9	guarniz.rame/copper gasket d.12	1		1	1		1
E 51+	5575.006	273	molla/spring	1	1	1	1	1	1
E 52+	3930.019	273	fondello/cup	1	1	1	1	1	1
E 53	1901.070	500	bullone racc./union bolt M 12	1		1	1		1
E 54	4670.060	9	guarniz.rame/copper gasket d.12	1		1	1		1
E 55	3587.101	560	el.valvola su pm.iniez./el.valv	1		1	1		1
E 56	1901.029	9	I bullone racc./connection bolt	1	1	1	1	1	1
E 57	4670.060	9	guarniz.rame/copper gasket d.12	1		1	1		1
E 58	4670.058	9	guarnizione/copper gasket	1	1	1	1	1	1
E 59	4670.058	9	guarnizione/copper gasket	1	1	1	1	1	1
E 60	1901.012	710	I bullone racc./connection bolt	1	1	1	1	1	1
E 61	4670.065	9	guarnizione/copper gasket 1,50	1	1				
	ex 4670.006	9	-> dal/from 20.09.1985->CT 974->				v	v	
	ex 4670.065	9	-> da/from s.No.3739805/CT 60041->			v	v	v	v
	-> 4670.099	550	A guarnizione/copper gasket 1,50			1	1	1	1
E 62	ex 9601.064	- - - - -	sostituito da/superseded by ->	v	v	v	v	v	v
	-> 9571.154	550	I tubo spurgo/bleed.pipe (mm 530)	1	1	1	1	1	1
E 63	4670.060	9	I guarnizione/copper gasket	1	1	1	1	1	1
E 64	ex 6590.074	- - (npd)	-> dal/from 10.12.1987->CT 9108->	v	v				
	->=6590.136	520	I POMPA INIEZIONE/INJECTION PUMP	1	1				
	ex 6590.055	- - (npd)	-> dal/from 10.12.1987->CT 9108->			v	v	v	
	->=6590.073	540	I POMPA INIEZIONE/INJECTION PUMP			1	1	1	
	=6590.189	520	POMPA INIEZIONE per avv.autoavv	1					
			INJECTION PUMP for rewind start						
	=6590.133	540				1	1		
	=6590.192	550	POMPA INIEZIONE/INJECTION PUMP						1
			(Pos. 64-66-68)						
E 65	7625.008	9	rondella/washer	1	1	1	1	1	1
E 66+	1200.031	9	anello OR/rubber oil seal	1	1	1	1	1	1
E 67	9790.037	9	vite/screw	1	1	1	1	1	1
E 68+	7265.008	271	raccordo/connection	1	1	1	1	1	1
E 69	9730.100	9	vite/screw M 8 X 1,25 X 25	2	2	2	2	2	2
E 70	7625.010	9	rondella/washer	2	2	2	2	2	2
E 74+	1200.268	9	anello OR/rubber oil seal	1	1	1	1	1	1
E 75+	4490.017	273	guarnizione/gasket	1	1	1	1	1	1
E 76	=3730.028	500	FILTRO COMBUSTIBILE/FUEL FILTER	1	1	1	1	1	1
			(Pos. 51-52-74-75-76-88-90-106-107)						
E 76+	2175.032	500	cartuccia comb./fuel element	1	1	1	1	1	1
E 77	ex 9374.075	- - - - -	sostituito da/superseded by ->	v	v	v	v	v	
	-> 9375.204	500	A tubo comb./fuel pipe (mm 142)	1	1	1	1	1	1
E 78	4670.060	9	I guarnizione/copper gasket	1	1	1	1	1	1

Motore/Engine	6LD 325	Industrial - K.AGR
"	6LD 325/C	Industrial
"	6LD 360	Industrial - K.AGR
"	6LD 400	Industrial - K.AGR
"	6LD 400/C	Industrial
"	6LD 435	Industrial - K.AGR



6LD 325 - 325/C - 360 - 400 - 400/C - 435 Industrial - K.AGR
vedi Tavola Ric./see Parts Table 1.5302.497

						6LD 325	6LD 325/C	6LD 360	6LD 400	6LD 400/C	6LD 435
F 4	ex 6370.154	- - - - -	- - - - -	sostituito da/superseded by ->		v	v				
	-> 6370.303	520	I	piastra std e autoavv./plate		1	1				
	ex 6370.118	- - - - -	- - - - -	sostituito da/superseded by ->				v	v	v	
	-> 6370.302	5400	I	piastra std e autoavv./plate				1	1	1	
	ex 6370.266	- - - - -	- - - - -	sostituito da/superseded by ->							v
	-> 6370.319	550	I	piastra std e autoavv./plate							1
F 5	4570.010	530		guarnizione/gasket		1	1	1	1	1	1
F 6	2568.086	500		convogliatore/shroud std		1					
	2568.087	503		'' ''			1				
	2569.058	540		'' ''				1	1		1
	2569.061	543		'' ''						1	
	2569.167	500		convogl.per prot.pul./shroud		1					
	2569.154	540		'' ''				1	1		
	2569.277	540		'' ''							1
	ex 2569.351	500	B	-> dal/from 30.08.1996/CT 60037->		v					
	-> 2569.559	520	A	convogl.autoavv./for rewind st.		1					
	ex 2569.352	540	B	-> dal/from 30.08.1996/CT 60037->				v	v		v
	-> 2569.560	530	A	'' ''				1	1		1
F 7	2670.022	540		coperchio puleggia/cover		1		1	1		1
F 8	6370.128	540		piastra avv.manov./plate		1	1	1	1	1	-
	6370.509	550		piastra avv.manov./plate		-	-	-	-	-	-
F 9	8460.083	90		spina/lockpin		1	1	1	1	1	1
F 10	4570.012	500		guarnizione/gasket		1	1	1	1	1	1
F 11	1760.001	9		bullone/bolt M 6 X 10		2	2	2	2	2	2
F 12	7565.004	9		rondella/washer		2	2	2	2	2	2
F 13	1585.058	9		boccola/sleeve		2	2	2	2	2	2
F 14	8430.019	9		spina/lockpin		1	1	1	1	1	1
F 15	1202.016	9		anello OR 109/O ring		1	1	1	1	1	1
F 16	8965.031	500		tappo ingrassatore/plug		1	1	1	1	1	1
F 17	5055.031	550		lamierino/plate							1
F 18	ex			-> da/from s.No.3114603/CT 60008->					v	v	
				-> da/from s.No.3129523/CT 60019->				v			
				-> da/from s.No.3150935/CT 60020->		v	v				
	-> 5725.043	540	A	molla/spring		1	1	1	1	1	1
F 19	6927.270	500		lamiera su conv./shroud panel		1		1	1		1
F 20	3203.050	9		dado/nut M 6		1		1	1		1
F 21	1760.093	9		bullone/bolt M 6 X 1 X 85		1		1	1		1
F 22	6480.041	540		pignone/gear		1	1	1	1	1	1
F 23	2568.098	500		convogliatore/shroud		1	1	1	1	1	1
F 24	2690.145	540		coperchio/cover		1	1	1	1	1	1
F 25	4970.012	283		ingranaggio/gear		1	1	1	1	1	1
F 26	7885.026	500		scatola/housing		1	1	1	1	1	1
F 27	7555.029	9		rondella/washer d. 8		3	3	3	3	3	3
F 28	1770.005	9		bullone/bolt M 8 X 22		3	3	3	3	3	3
F 29	5801.027	270		molla/spring		1	1	1	1	1	1
F 30	7980.045	500		scodellino/cup		1	1	1	1	1	1
F 31	1240.041	9		anello seeger/circlip		1	1	1	1	1	1
F 32	6745.050	107		pressostato/press.oil switch		1	1	1	1	1	1
F 33	6491.013	360		pipetta/pipe elbow		1	1	1	1	1	1
F 34	9790.037	9		vite/screw M 6 X 1 X 8		2	2	2	2	2	2
F 35	7565.007	9		rondella/washer		2	2	2	2	2	2
F 36	6960.069	500		puleggia/pulley		1		1	1		1
	6960.083	503		'' ''			1			1	
F 37	1765.053	9	I	bullone/bolt M 7 X 1 X 24		4	4	4	4	4	4
F 38	4055.003	283		fune avviamento/rope starting		1	1	1	1	1	1
F 42	1165.006	9		anello seeger/circlip		1		1	1		1
F 43	5660.066	196		molla/spring		1		1	1		1
F 44	5025.094	196		dente/tooth		1		1	1		1

Motore/Engine	6LD 325	Industrial - K.AGR
'' ''	6LD 325/C	Industrial
'' ''	6LD 360	Industrial - K.AGR
'' ''	6LD 400	Industrial - K.AGR
'' ''	6LD 400/C	Industrial
'' ''	6LD 435	Industrial - K.AGR



6LD 325 - 325/C - 360 - 400 - 400/C - 435 Industrial - K.AGR
vedi Tavola Ric./see Parts Table 1.5302.497

					6LD 325	6LD 325/C	6LD 360	6LD 400	6LD 400/C	6LD 435
F 83	ex 3855.061	500	B	-> dal/from 30.08.1996/CT 60037->	v		v	v		v
	-> 3527.391	520		distanziale/spacer	1		1	1		1
F 84	3203.050	9		dado/nut				1		1
F 85	7625.007	9		rondella/washer diam.6				1		1
F 86	3527.357	106		distanziale/spacer				1		1
F 87	ex			-> da/from s.No.3511400/CT 60037->				v		v
	-> 8545.500	550		staffa/brace				1		1
	8546.031	530							1	
F 88	1760.007	9		bullone/bolt M 6 X 25				1		1
F 89	9732.037	9		vite mot./screw M 10 X 1,5 X 40	2	2	2	2	2	2
F 90	ex			-> da/from s.No.3511400/CT 60037->	v		v	v		v
	-> 5111.095	500	A	lamierino fissaggio/plate	1		1	1		1
F 91	ex			-> da/from s.No.3511400/CT 60037->	v		v	v		v
	-> 5111.096	500		lamierino fissaggio/plate	1		1	1		1
F 92	ex 6370.119	- -	(npd)	-> da/from s.No.3203273/CT 60013->	v		v	v		
	ex 6370.402	- -	- - - -	sostituito da/superseded by ->	v		v	v		
	-> 6370.420	540	I	piastra avv.el./el.start.plate	1		1	1		
	6370.517	533				1			1	
	ex			-> da/from s.No.3076673/CT 60006->						v
	ex 6370.403	- -	- - - -	sostituito da/superseded by ->						v
	-> 6370.320	550	I	piastra avv.el./el.start.plate						1
	ex 6370.416	- -	(npd)	-> da/from s.No.3511400/CT 60037->	v		v	v		
	-> 6370.522	540	A	per mot.inson./for denois.eng.	1		1	1		
	ex 6370.417	550	B	-> da/from s.No.3511400/CT 60037->						v
	6370.546	550	A	per mot.inson./for denois.eng.						1
F 93	ex			-> da/from s.No.3203273/CT 60013->	v		v	v		
	-> 6360.073	540		-> da/from s.No.3076673/CT 60006->						v
	-> 6360.073	540		piastra sostegno/plate	1	1	1	1	1	1
F 94	7625.062	9		rondella/washer d.6,5	4		4	4		4
F 95	6055.055	520		pernetto/hollowstud	4		4	4		4
F 96	3203.050	9		dado/nut M 6	4		4	4		4
F 97	9730.315	9		vite/screw M 7 X 1 X 35	4		4	4		4
F 98	ex 1472.019	530	B	-> dal/from 30.08.1996/CT 60037->	v		v	v		v
	-> 1472.026	520	A	avviatore autoavv./rewind start	1		1	1		1

Motore/Engine	6LD 325	Industrial - K.AGR
"	6LD 325/C	Industrial
"	6LD 360	Industrial - K.AGR
"	6LD 400	Industrial - K.AGR
"	6LD 400/C	Industrial
"	6LD 435	Industrial - K.AGR